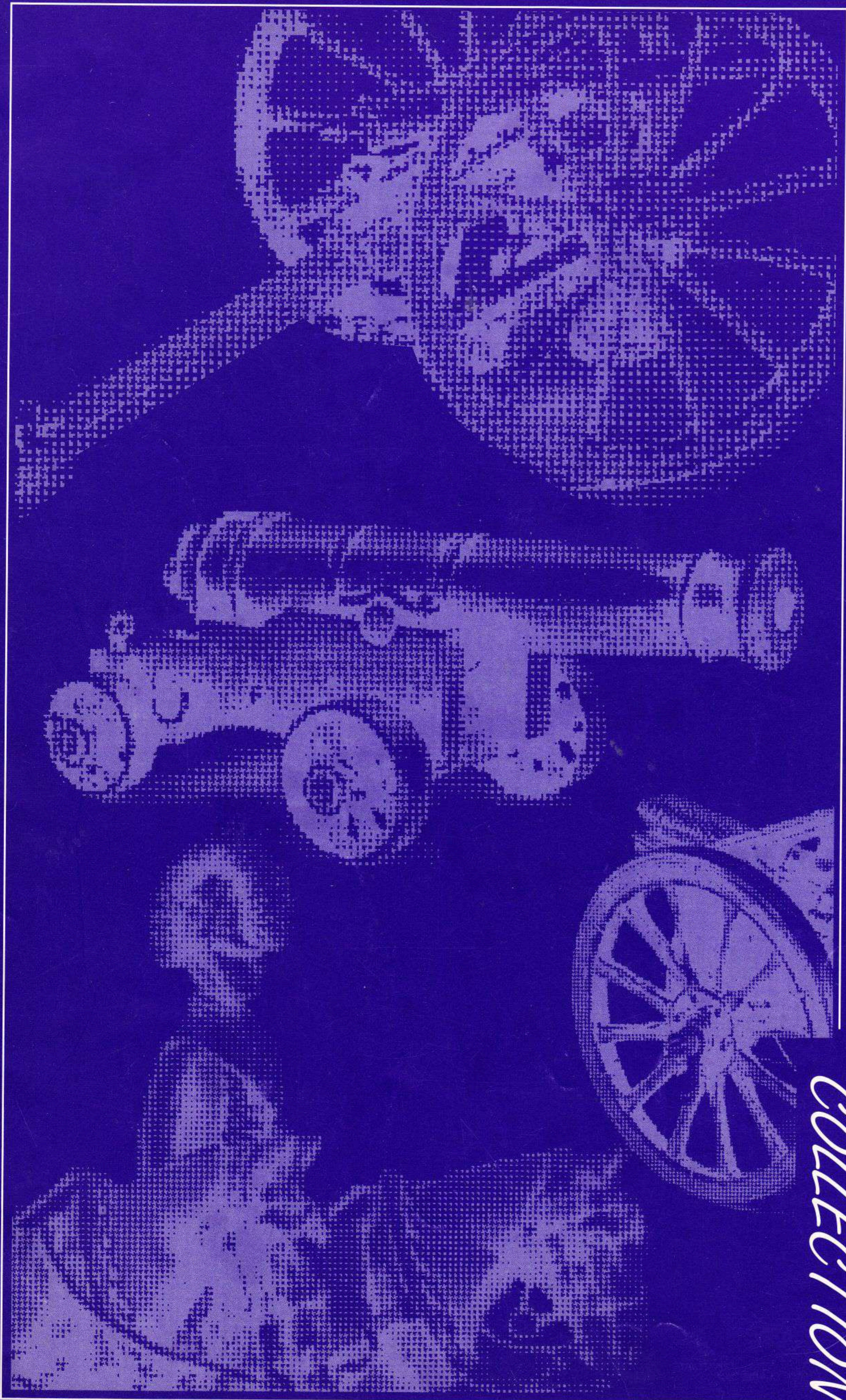


# THE FINN O'HERRE

*COLLECTION*



# Introduction

The Hinchliffe Company established a fine reputation for good quality, accurate international kits of artillery models including guns, limbers, horse teams and artillery new figures.

When Skytrex Ltd purchased the Hinchliffe Company several years ago it was decided to maintain the range and research the requirements of our new customers. 1991 produced the first of many new models and a new gun team.

A definitive name to reflect the nature of models, which now form a growing collection of historic artillery equipment, was decided to be the HINCHLIFFE CLASSIC GUN COLLECTION. The scale of all models dated prior to 1900 will be 54mm to correspond with the popular 54mm figures. Models dated post 1900 will be 1/35th scale which will be compatible with other manufacturers models for the twentieth century.

Whilst the needs of research and the time required to produce accurate original models will only allow the range to grow slowly, we hope that the models released will give an increasingly comprehensive collection, marking the milestones in the development of artillery.

We welcome your suggestions for expanding the range and hope that this, the first fully illustrated catalogue of the range will be of interest.

**SKYTREX**  
LTD

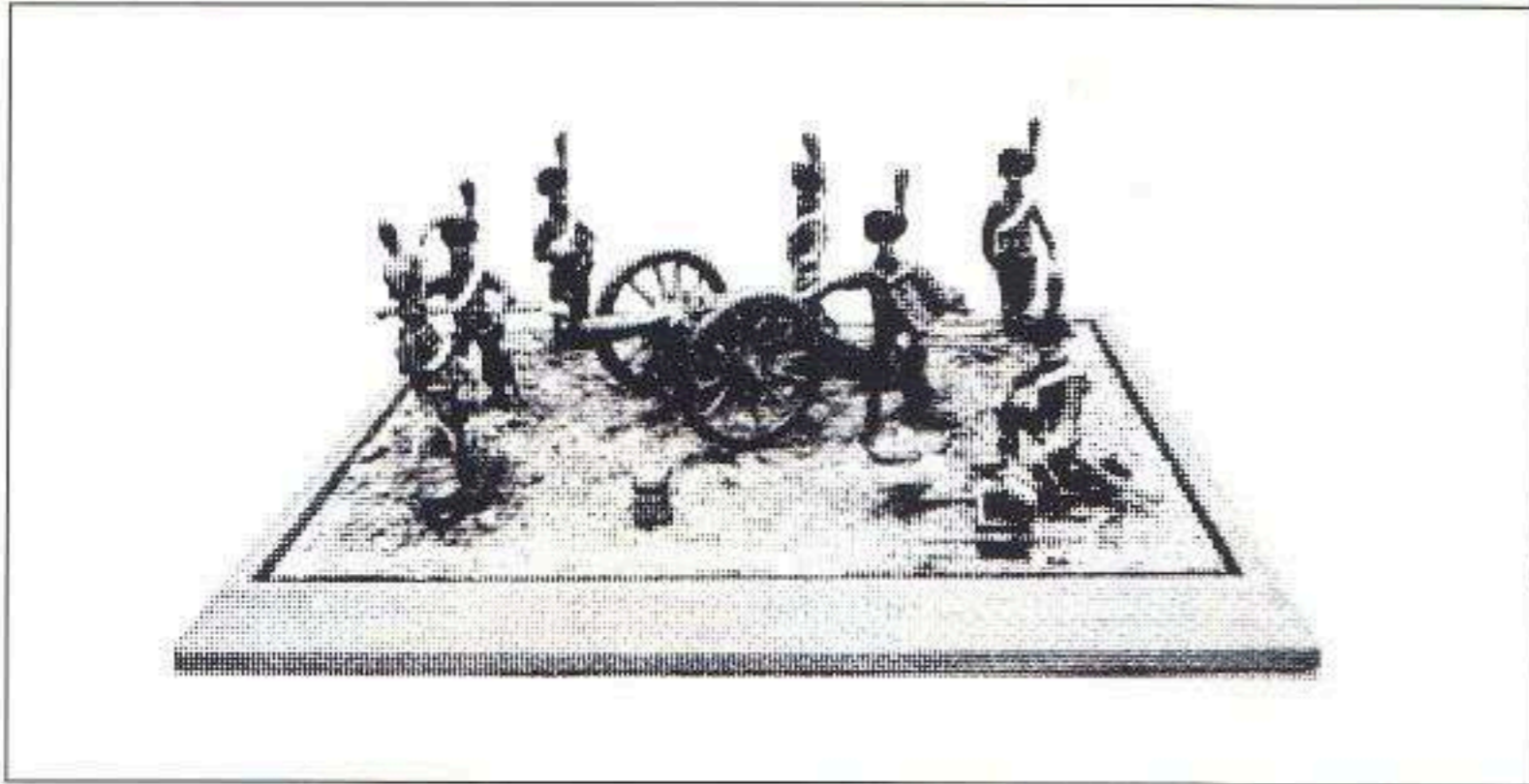
**John Hammond**  
Managing Director  
Skytrex Limited 1996

## **5412 18PDR NAPOLEONIC PERIOD NAVAL GUN AND CREW**

The 18pdr was a medium size gun of the period and probably the most commonly used being found on British warships from frigates to ships of the line. The crew includes seamen, a midshipman and a naval Lieutenant.



# *Guns and Crews*

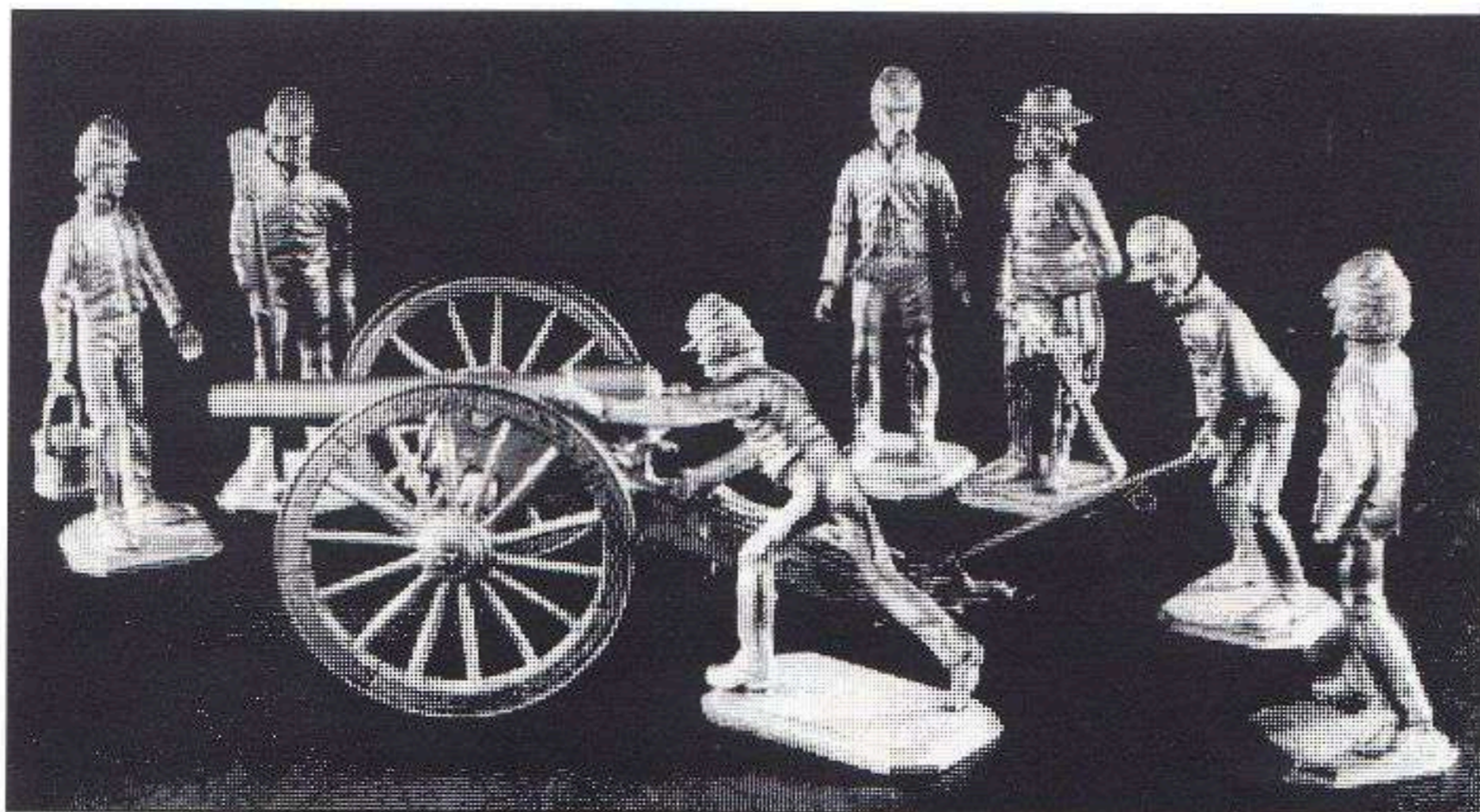
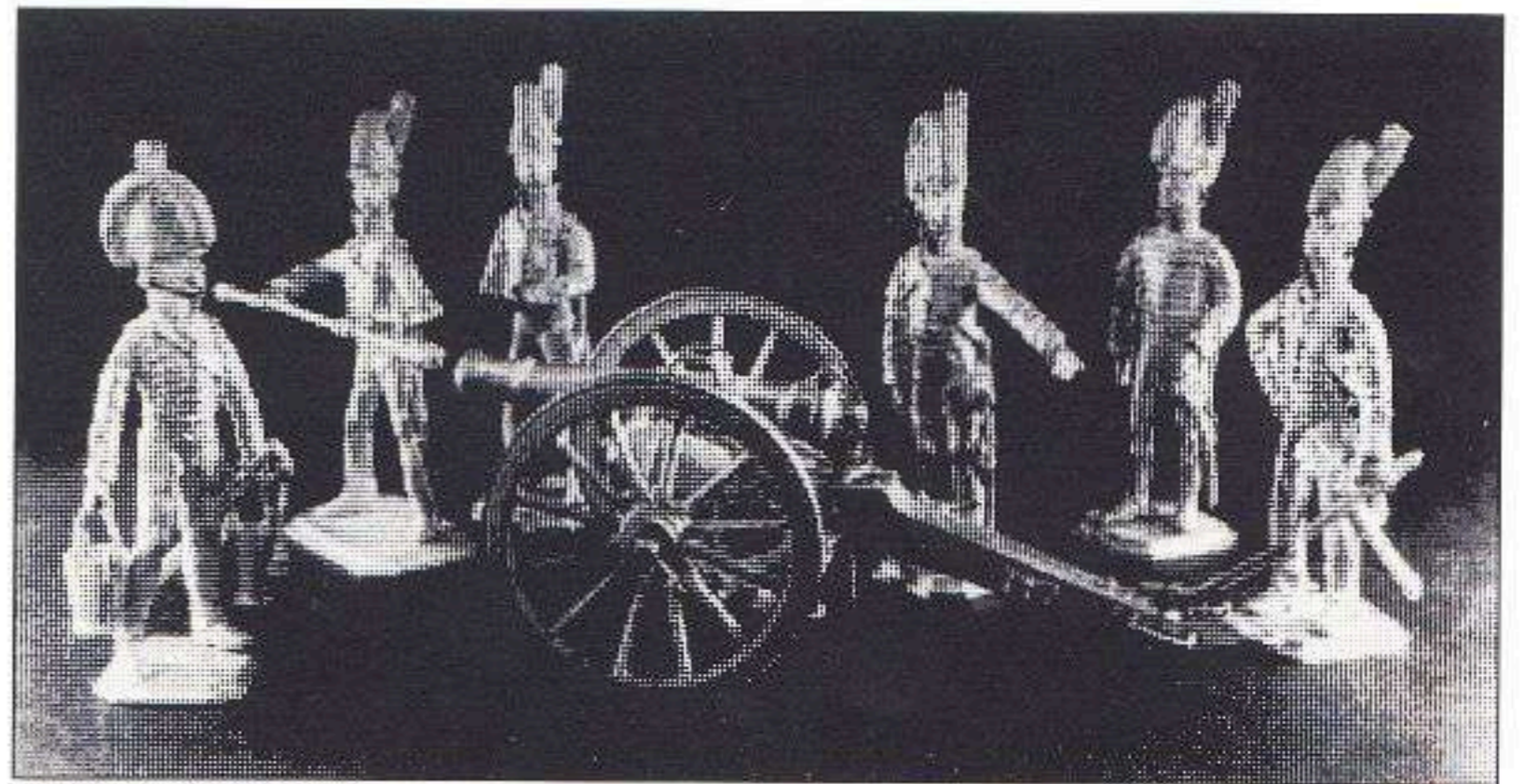


## **5401 FRENCH HORSE ARTILLERY OF THE GUARD 1815**

Created in 1806 as the elite of the French Napoleonic Army its prime functions were to combine with the personal bodyguard of the Emperor and form the ultimate reserve.

## **5402 6PDR GUN & CREW OF THE ROYAL HORSE ARTILLERY 1815**

Model depicts the gun and crew considered the elite by its members, it served with distinction at Waterloo in 1815 plugging the gaps between the squares halting the French Cavalry.

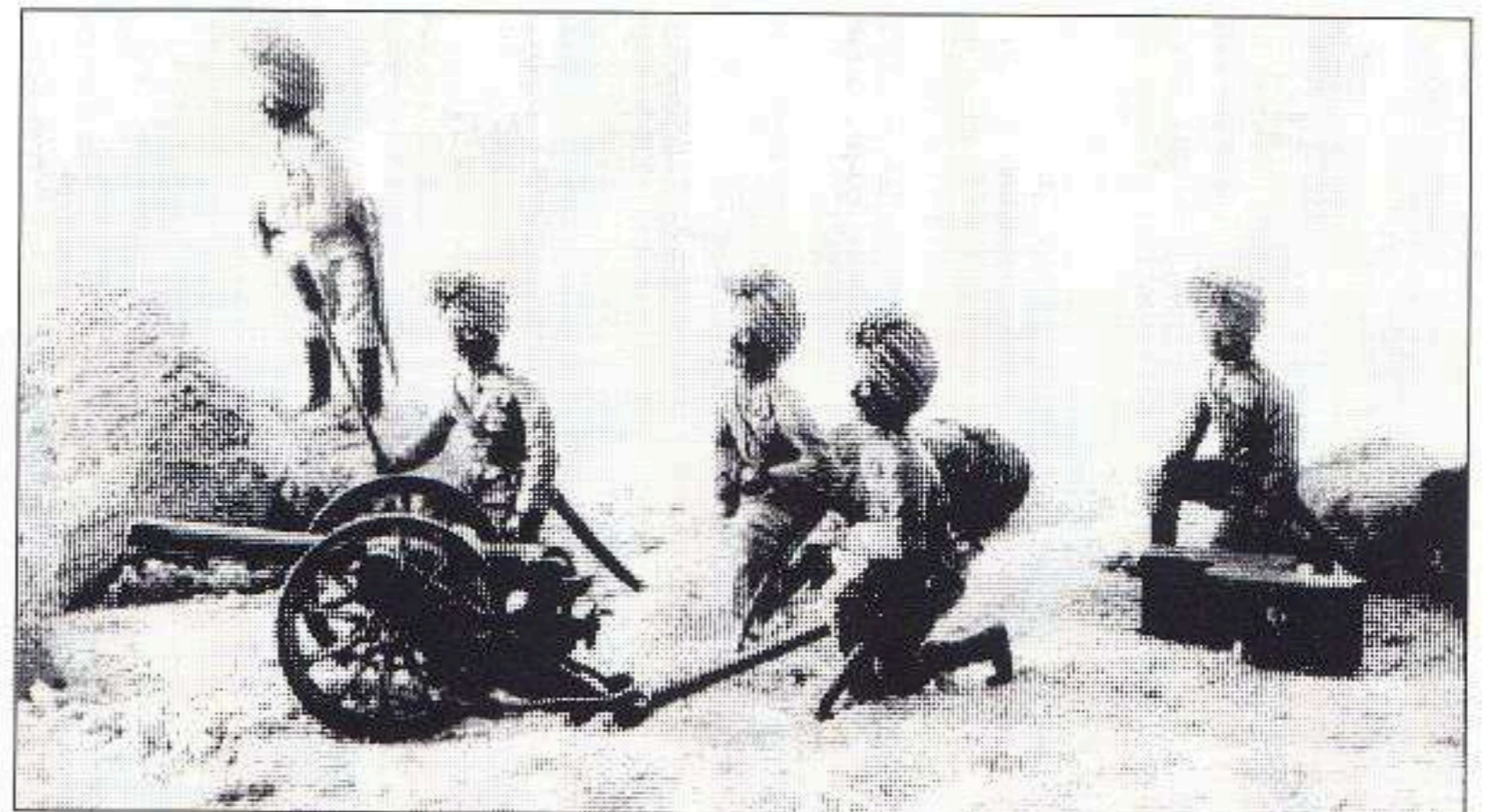


## **5402 AMERICAN CIVIL WAR GUN AND CREW**

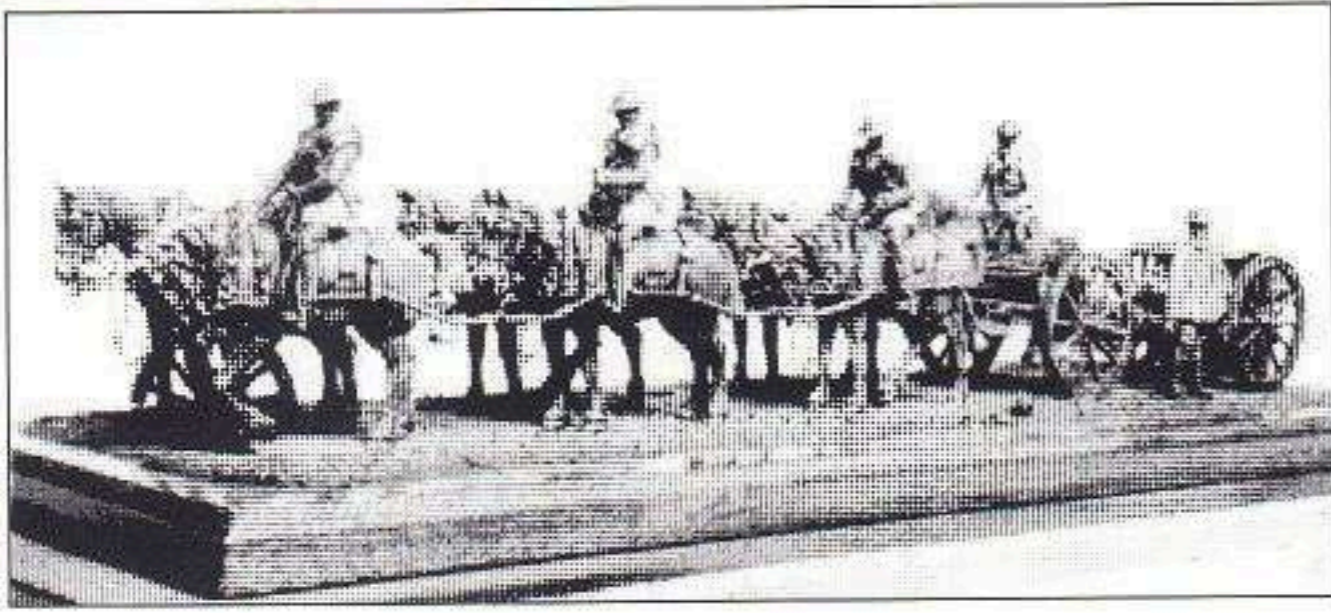
Artillery played an increasing role as the 19th Century progressed. The Parrot 10pdr cannon although still muzzle loaded, showed much increased accuracy as its barrel was rifled. This set includes a seven man gun crew.

## **5411 SCREW GUN & SIKH CREW**

An unusual group but commonly seen in the 19th Century, a mule portable screw gun with Indian crew.



# Gun Teams



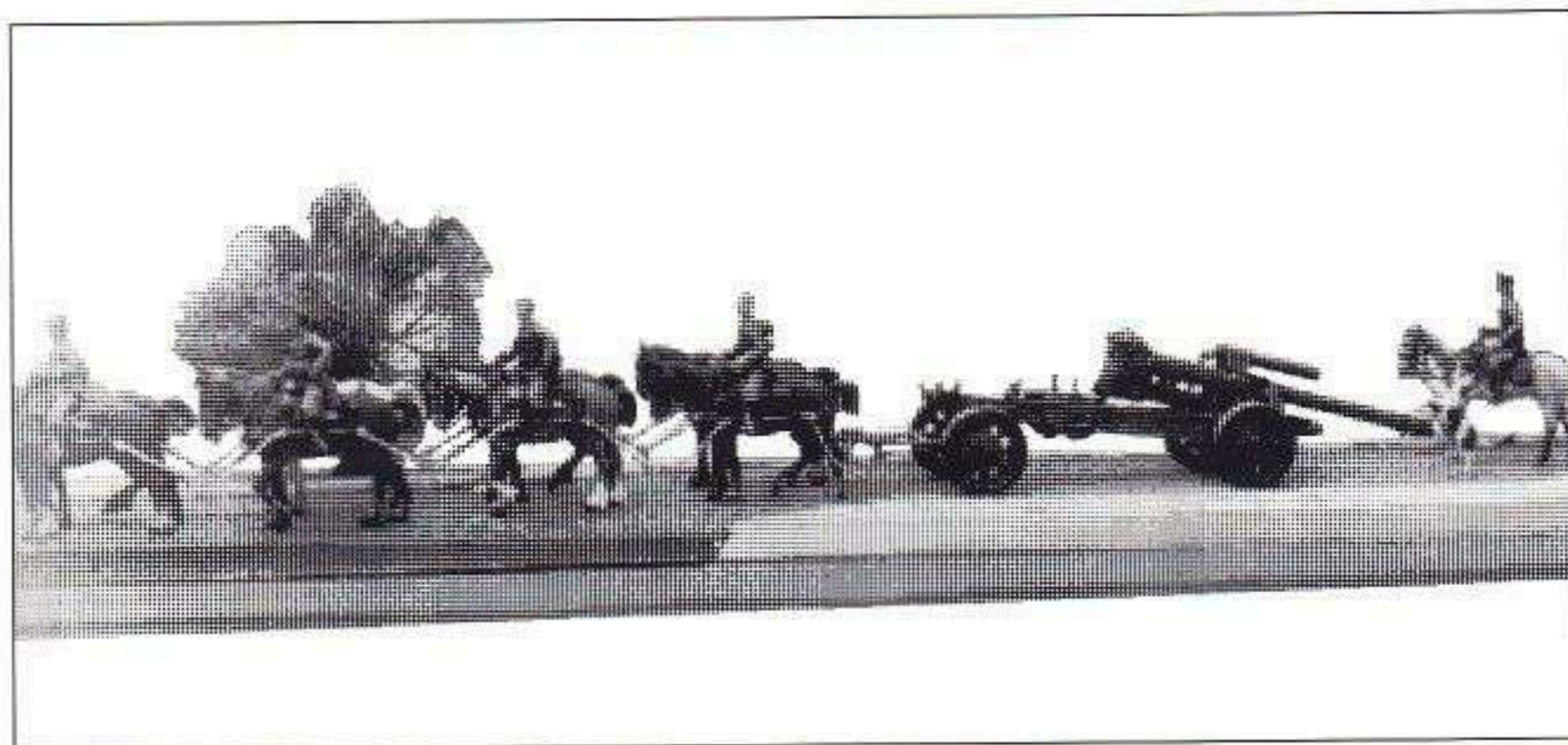
## 5404 BRITISH 18PDR WWI GUN TEAM

This model forms a standard British medium field artillery unit of gun, limber, horseteam and crew of the WWI and later years up to the mechanization of the artillery in the mid 1930's



## 5405 BRITISH NAPOLEONIC HORSE ARTILLERY GUN TEAM

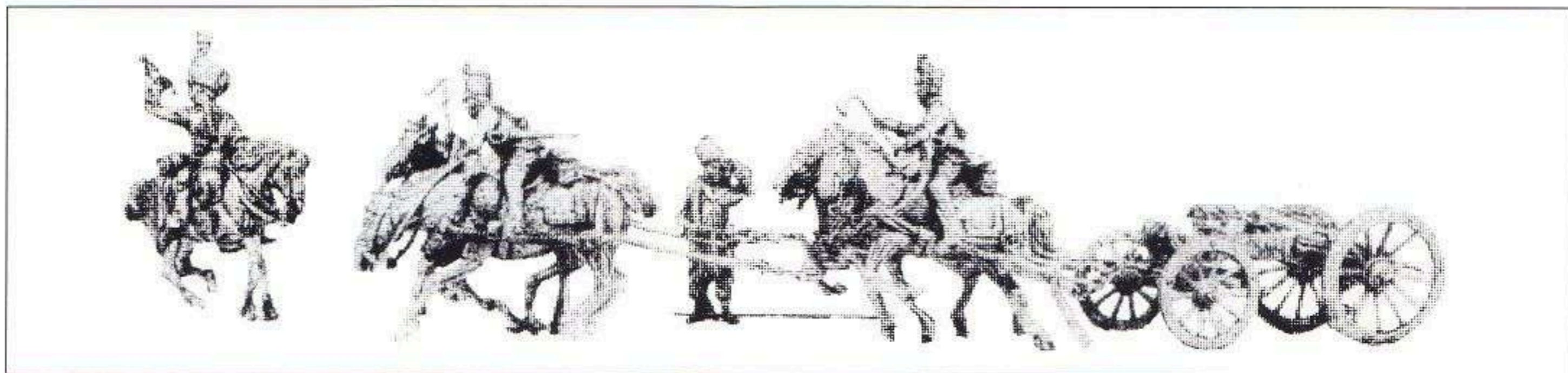
Saw long campaigns in the Spanish Peninsular from 1808-1814 before it's greatest triumph at Waterloo. It uses the single block trail carriage developed in the late 18th Century giving it more manoverability and durability.



## 5406 GERMAN WORLD WAR 2 15CM S.F.H.18 FIELD HOWITZER AND HORSE TEAM

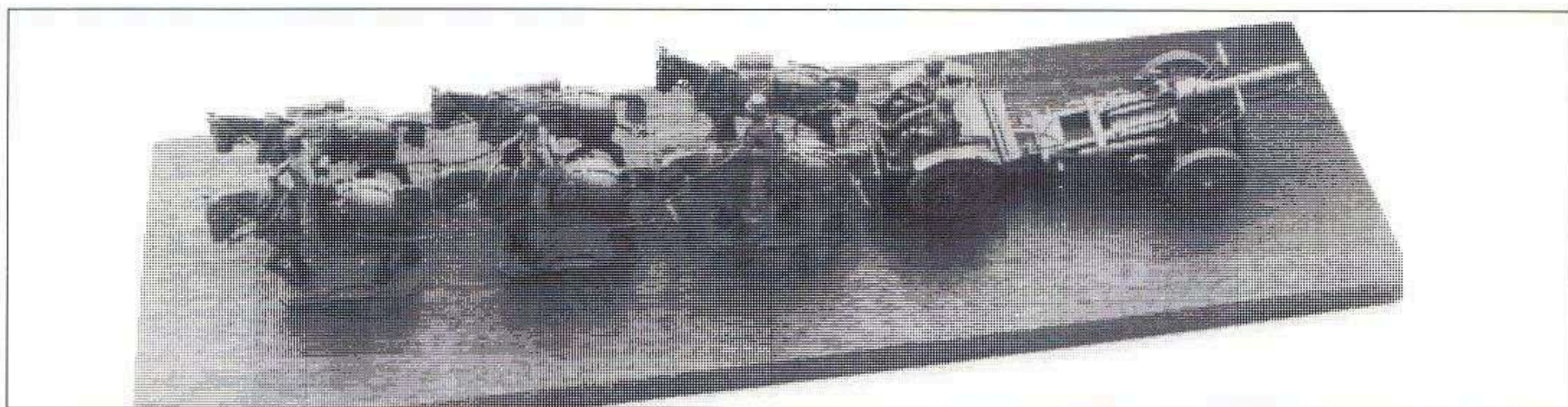
Used on all fronts. The field piece was the backbone of the German divisional artillery developed in the 1920's, it was a medium sized gun developed between the two companies of Rhinemetall and Krupp. The kit includes gun and limber, eight horse team, artillery crew and officers.

# Gun Teams



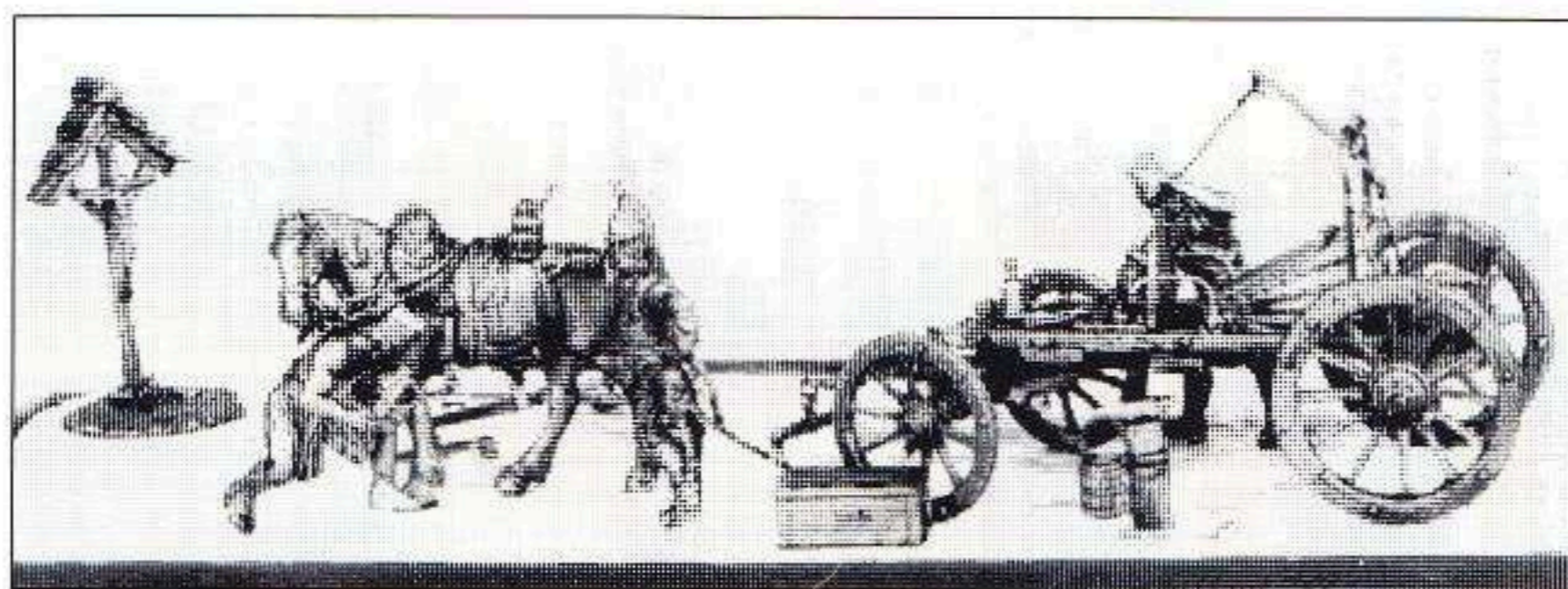
## 5407 FRENCH NAPOLEONIC GALLOPING GUN TEAM

This model depicts a detachment of French line artillery bringing into action a 12pdr. It makes an exciting and colourful diorama.



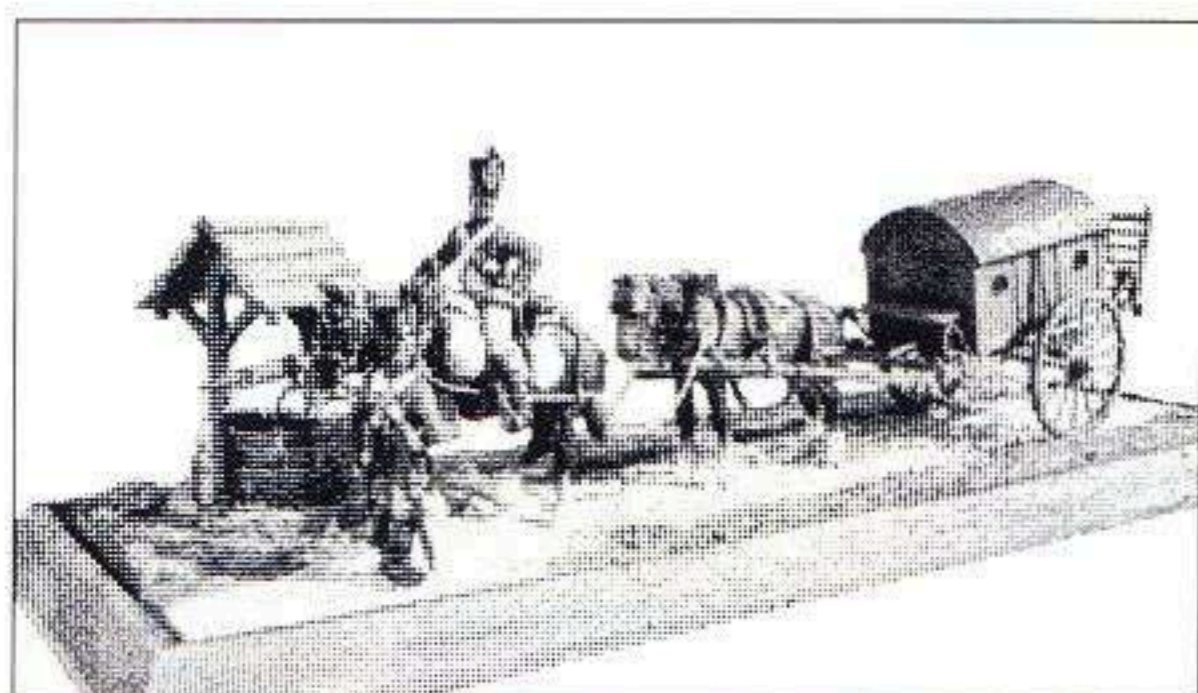
## 5409 GERMAN WW2 INFANTRY GUN TEAM.

This kit includes the SIG33 150mm heavy gun together with the artillery limber and six horse gun team, mounted artillery riders and limber riders.



## 5408 FRENCH NAPOLEONIC FORGE DE CAMPAGNE

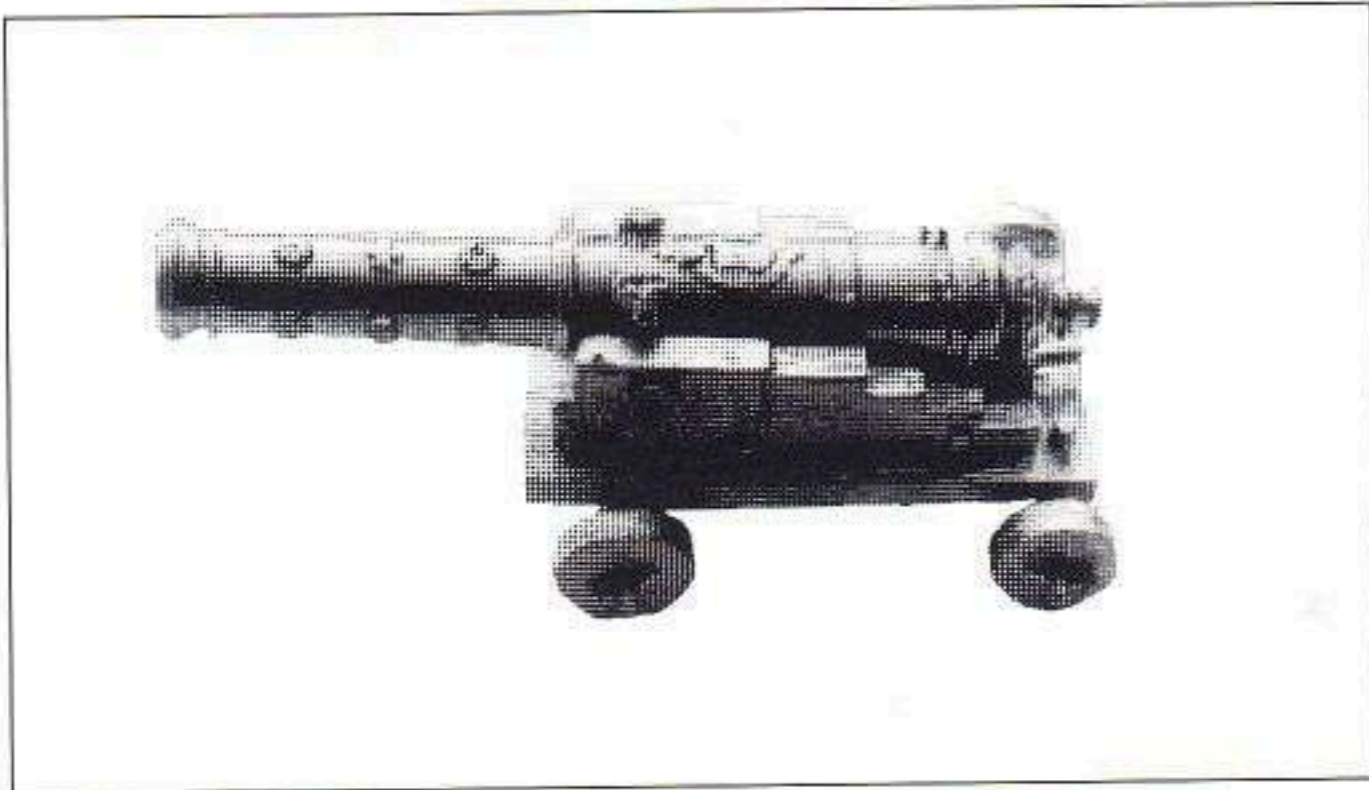
The mobile forge was used extensively during the Napoleonic wars. This diorama shows the smith working on a dragoon's horse and exchanging any army gossip along the way.



## 5403 FRENCH NAPOLEONIC LARREY LIGHT AMBULANCE HORSES AND ATTENDANTS

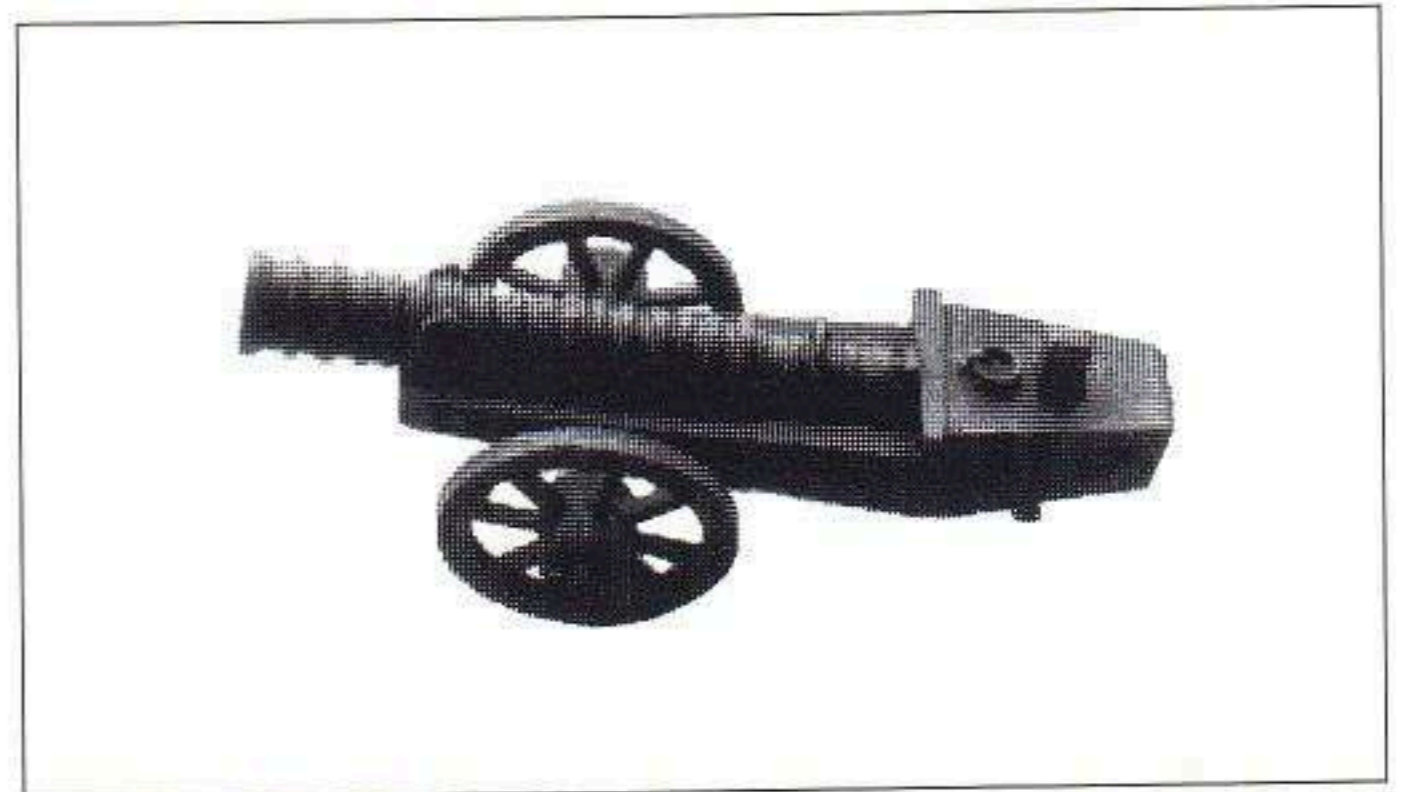
This model shows this unique vehicle for medical care and specialised transport for the wounded in the early 19th Century. The name "Larrey Light" came from the creator of the vehicle Dominique Jean Larrey who devised it during early campaigns.

# Early Artillery



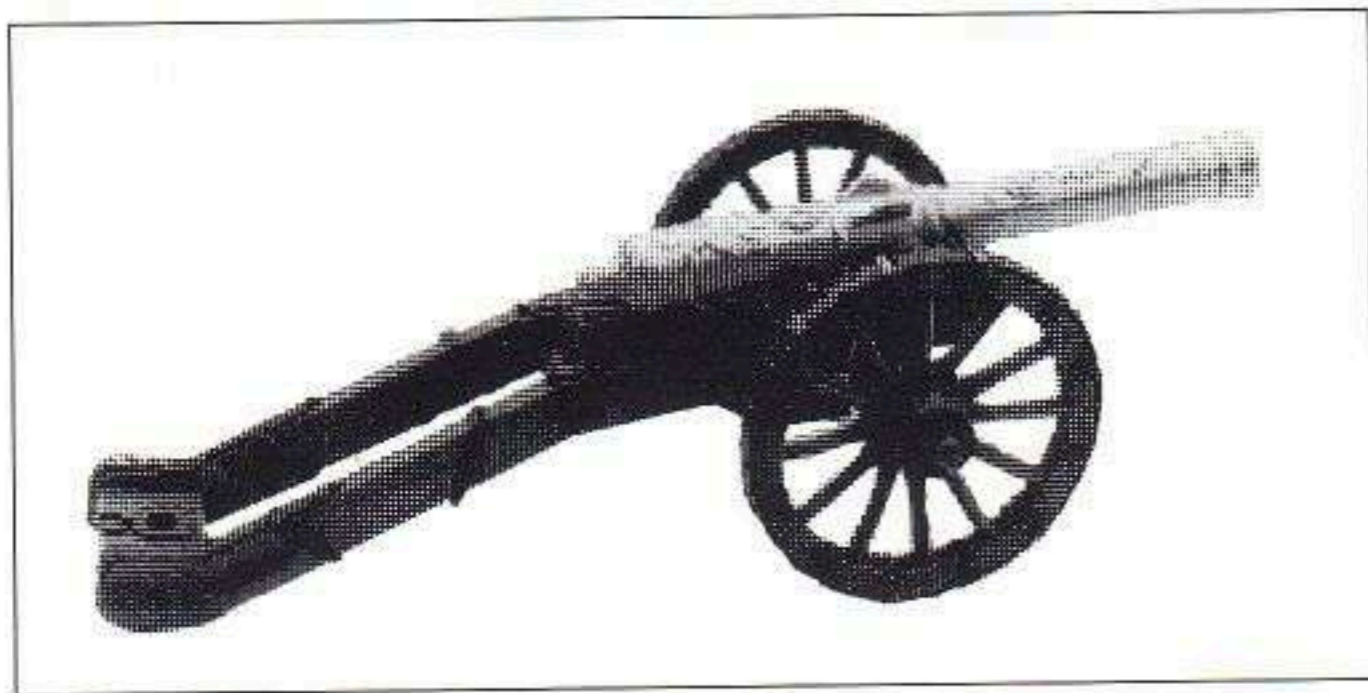
## ME/G/30 'MARY ROSE' DEMI CANNON

The gun from which this model is based was recovered from the "Mary Rose" wreck and can currently be seen at the museum in Portsmouth. It is an example of the "state of the art" technology of the period.



## ME/G/31 "MARY ROSE" BREECH LOADING CANNON

Breech loading cannons were widely used in early guns, this model being a good example of a heavy cannon of this type which was also recovered from the "Mary Rose" wreck.



## ME/G/38 FRENCH 12PDR GUN

Issued to the French Army in 1732 to the system of Jean Florent de Villiere. These guns were characterised by heavy barrels about 21 calbres long. Only the barrels were standardised, the carriages differed from Provence to Provence

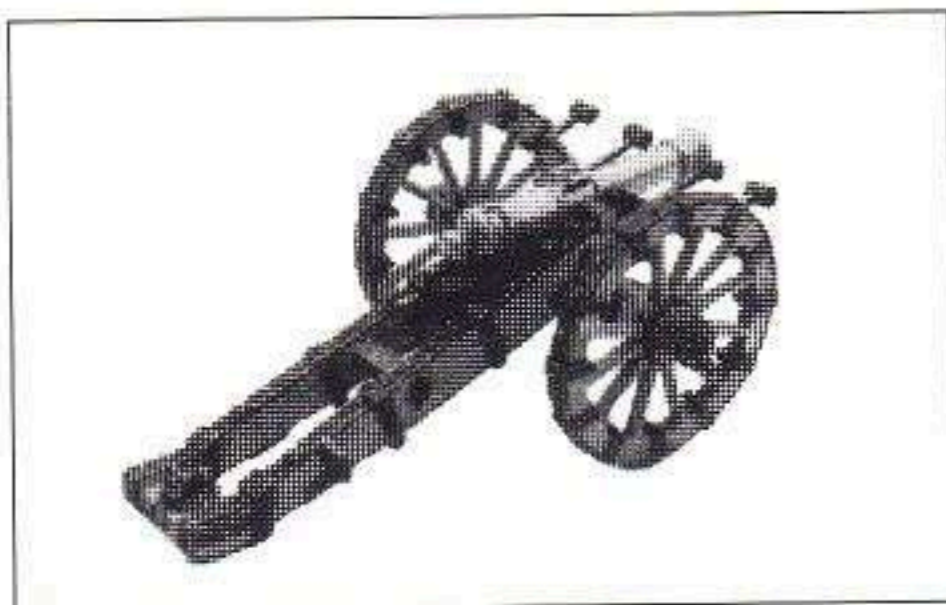
## MODELS TO BE RELEASED IN 1992

ME/G/40 RUSSIAN 12PDR LICORNE HOWITZER

ME/G/41 RUSSIAN 6PDR GUN/HOWITZER

ME/G/42 EUROPEAN 17th CENTURY CULVERIN

This is a model of a typical gun of this period where each gun and carriage was produced to each individual manufacturers design with little standardisation.

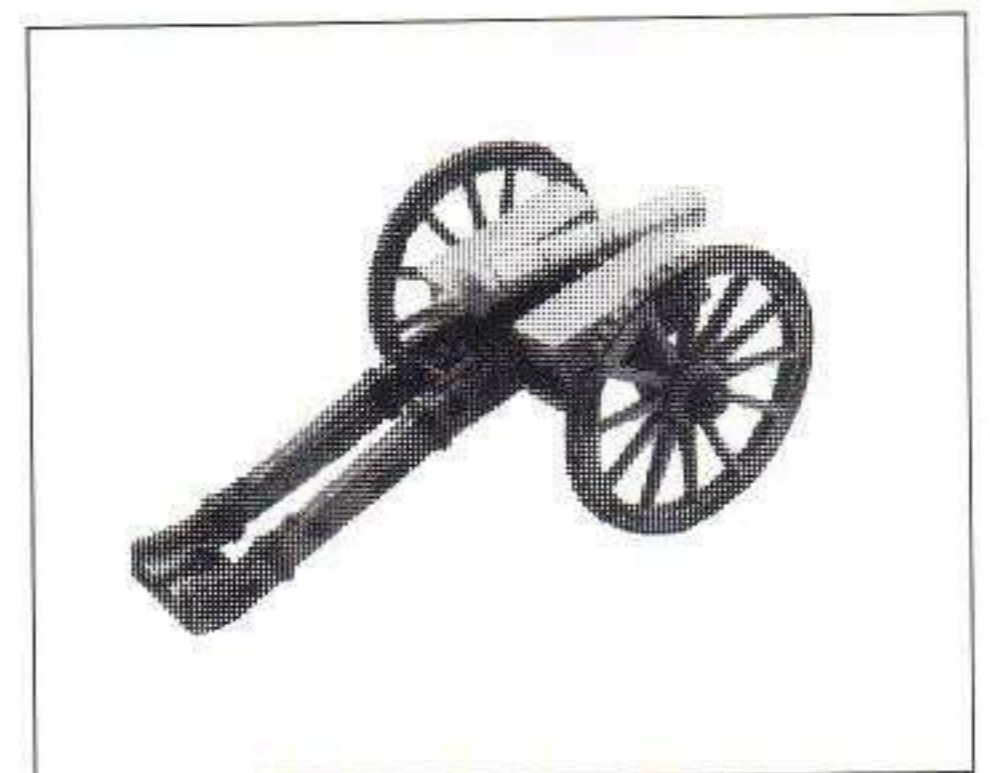


## ME/G/37 AUSTRIAN 6PDR GUN

This gun formed part of the first complete standardised artillery system developed by Baron Von Liechtenstein. All barrels were 16 calibres long. The artillery system served the Austrian Army from 1753 to 1859.



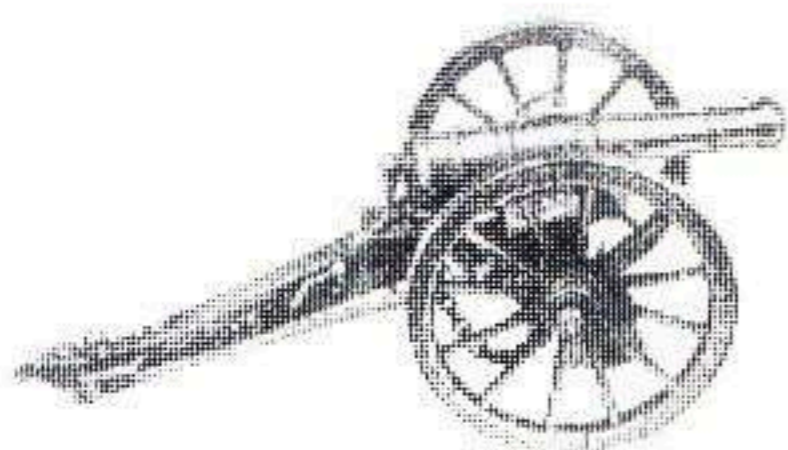
## ME/G/27 RENAISSANCE FALCONETTE



## ME/G/39 BRITISH LIGHT 6PDR BATTALION GUN

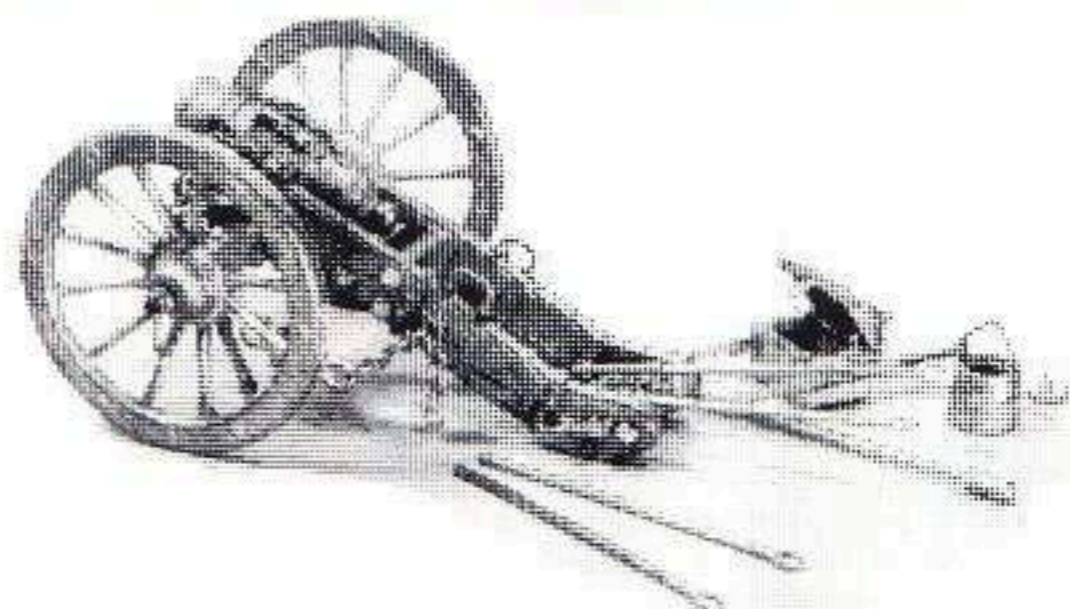
Designed by William Congreve, introduced into service in 1776 these weapons served the British Army until 1800 when it was replaced by heavier calibre weapons.

# Artillery of Napoleonic Wars



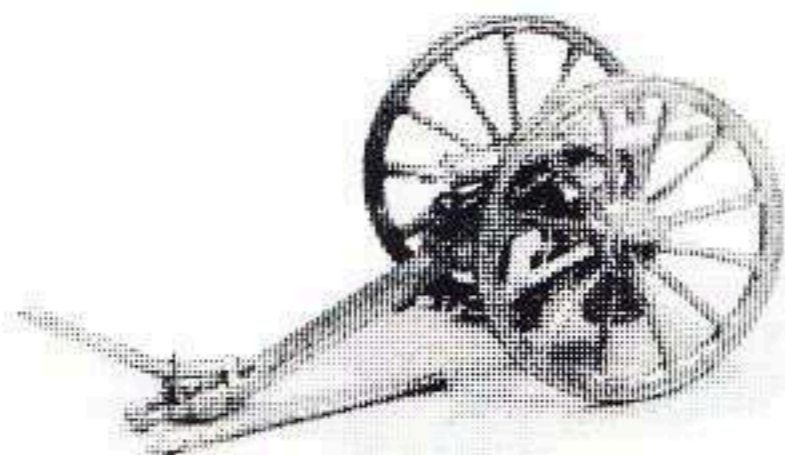
## ME/G/1 BRITISH 9PDR GUN

Used from 1792 to the end of the Crimean War it was the first weapon to use the block trail developed by William Congreve. This development produced a lighter more manoeuvrable weapon.



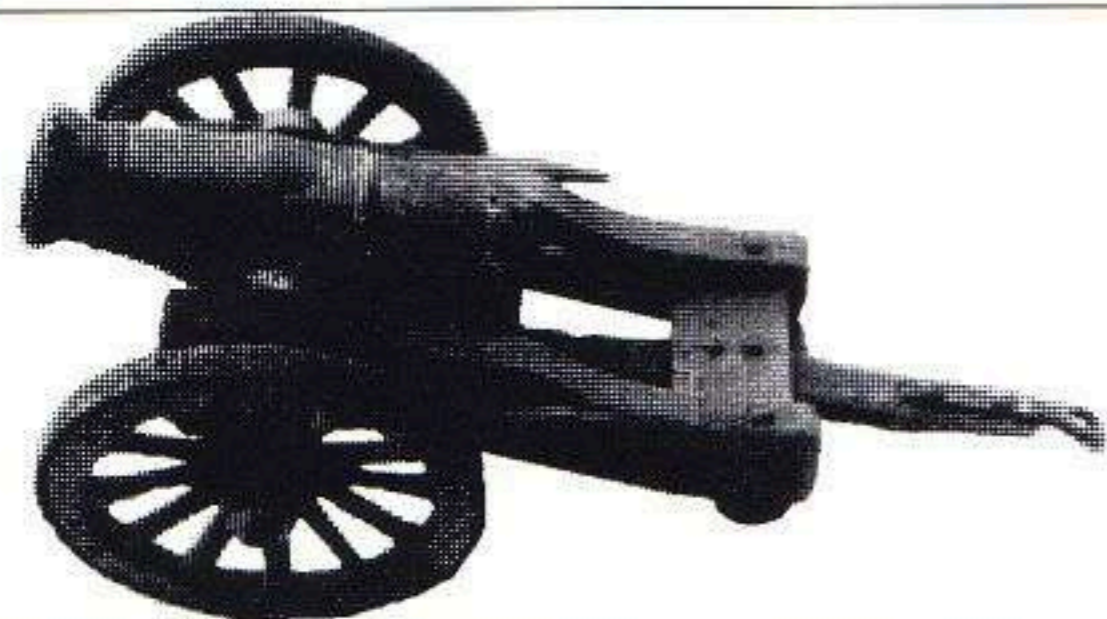
## ME/G/5 FRENCH NAPOLEONIC 8" HOWITZER

Similar to the 6" Howitzer but with a longer range up to about 1600 yards.



## ME/G/7 BRITISH LIGHT 3PDR 1700-1746

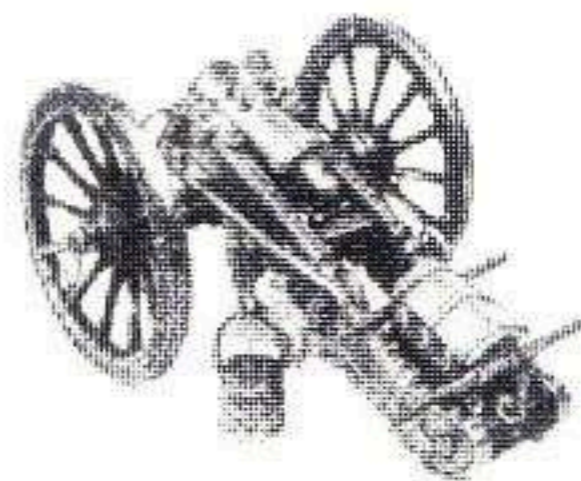
This is an example of how quickly it was possible for the British equipment to find its way onto the North American continent being introduced in 1740 and being in service in the U.S.A in 1746.



## ME/G/11 BRITISH 10in HOWITZER

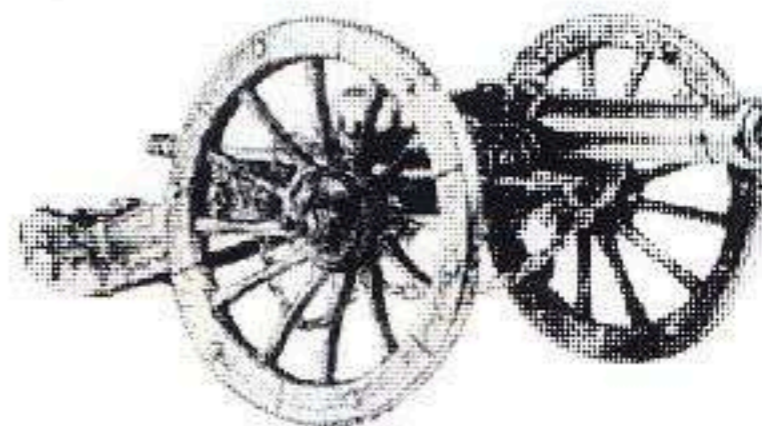
Period 1840 - The Heavy artillery of the British Army for this period. The 10" Howitzer did not feature in the Crimea, however the smaller 8" was used in the campaign.

## ME/G/24 FRENCH NAPOLEONIC 8PDR GUN



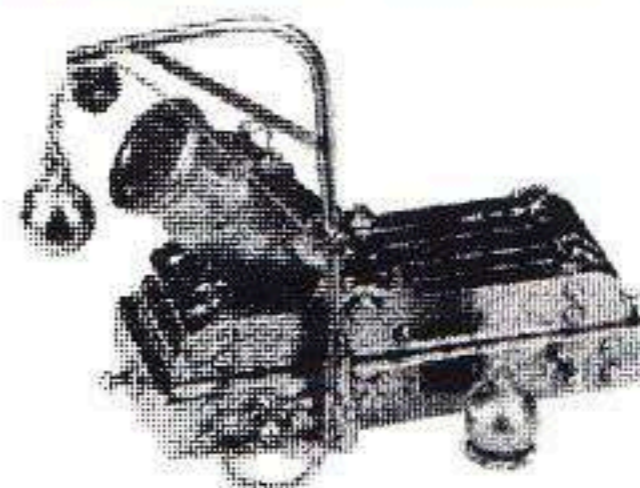
## ME/G/4 FRENCH NAPOLEONIC 6in HOWITZER

Using a standard carriage the weapon was issued to artillery batteries of the French Army throughout the Napoleonic Wars.



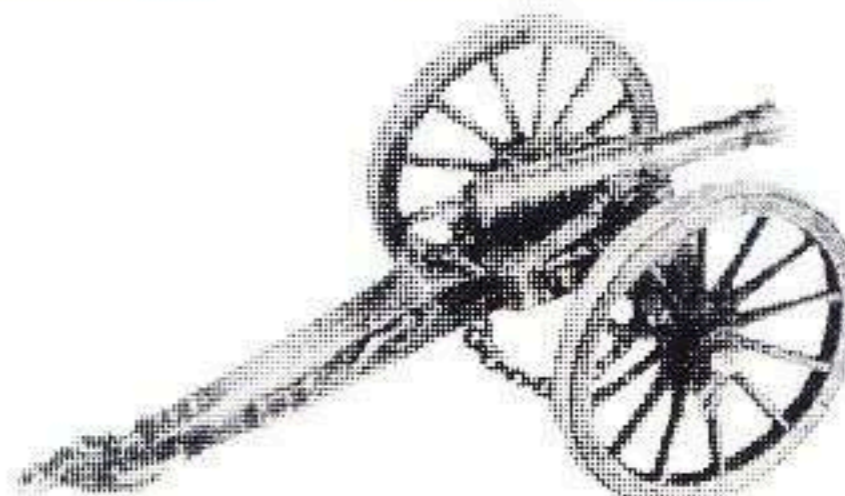
## ME/G/6 FRENCH 12PDR GUN

Used with great effect by the French Army throughout the Napoleonic Wars, this weapon, often used in massed batteries, proved a battle winner for Napoleon on many occasions.



## ME/G/8 BRITISH 13" LAND MORTAR 1760-1860

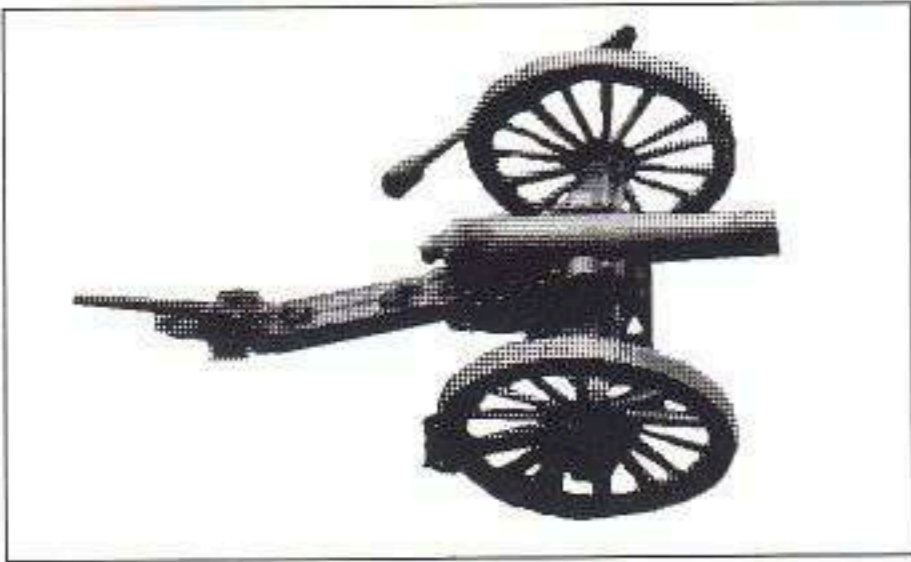
The barrel was fixed permanently at 45 degrees and had a range of 245 yards with a 14oz charge and 2706 yards with an 8lb charge.



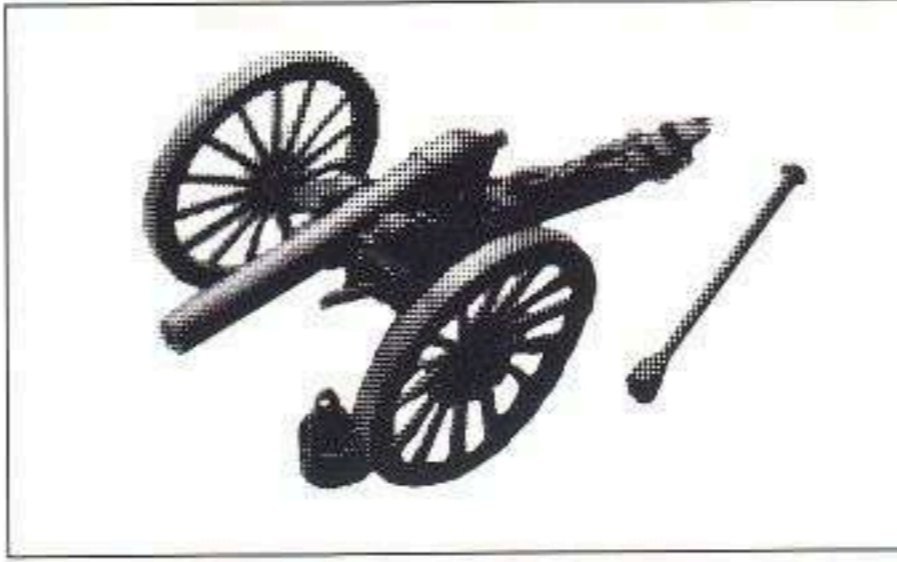
## ME/G/14 BRITISH 6PDR GUN WATERLOO / CRIMEA

After 1815 this gun ceased to be used as field artillery but became the standard equipment of the British and Indian horse artilleries seeing more action than any other piece of artillery. It had a capable range of 1200 yards firing roundshot.

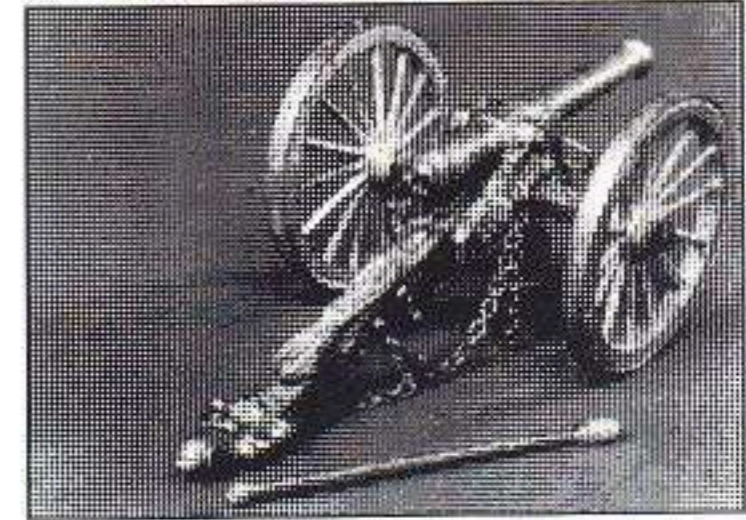
# ACW and Colonial War Guns



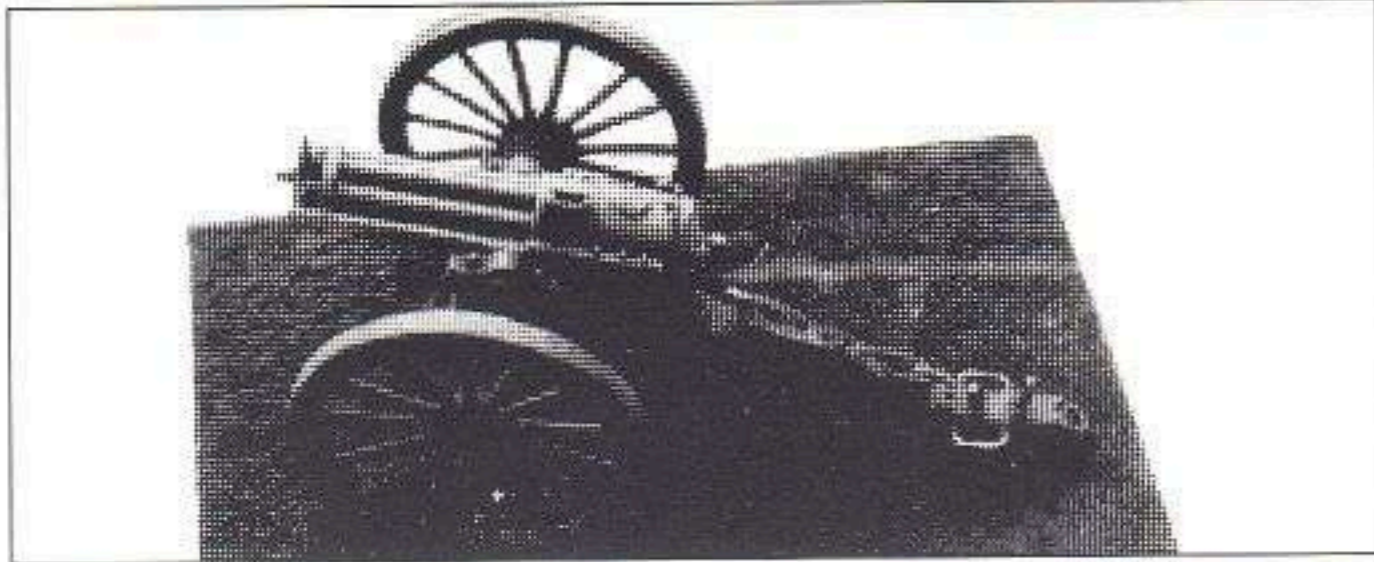
**ME/G/16 ACW 12PDR GUN 'NAPOLEON'**



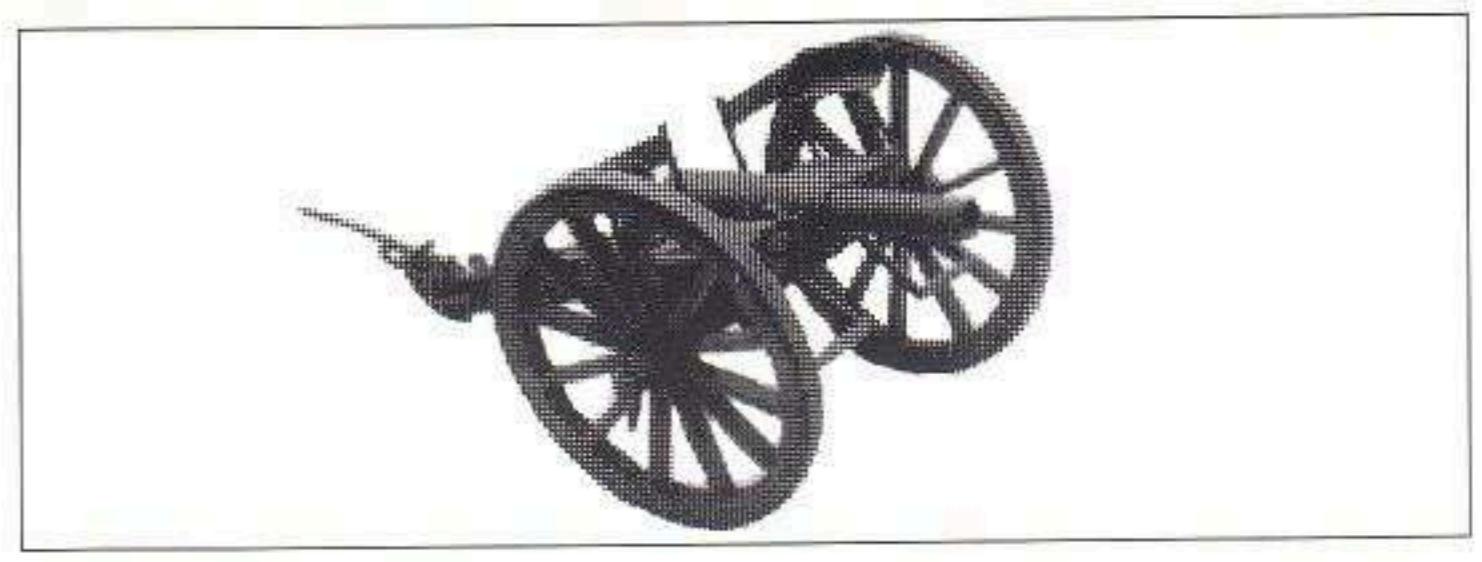
**ME/G/17 ACW 10PDR PARROT RIFLED GUN**



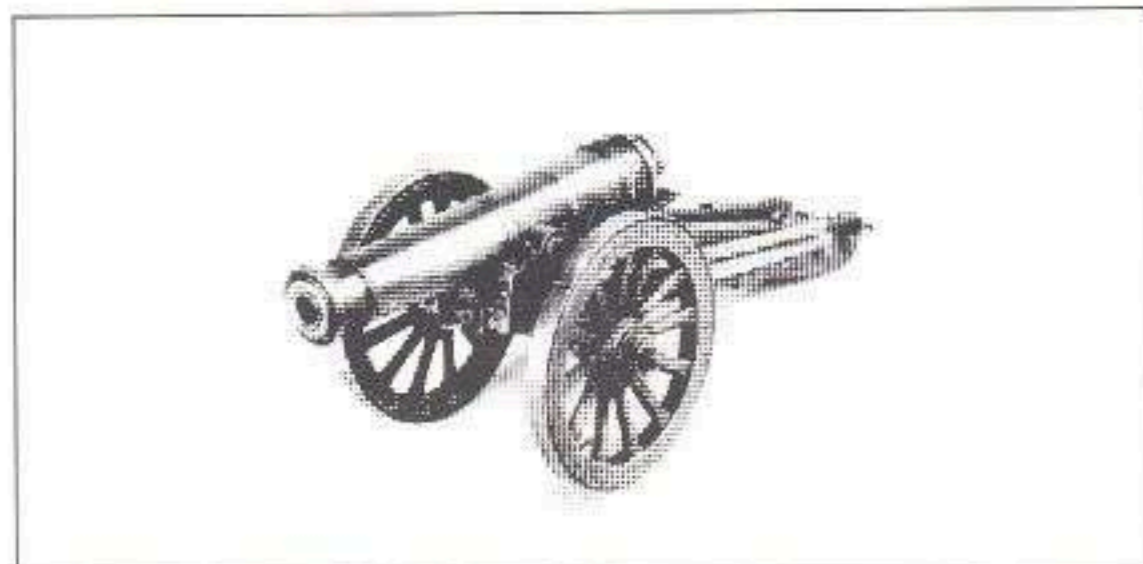
**ME/G/18 10PDR ARMSTRONG MUZZLE LOADING RIFLE GUN**



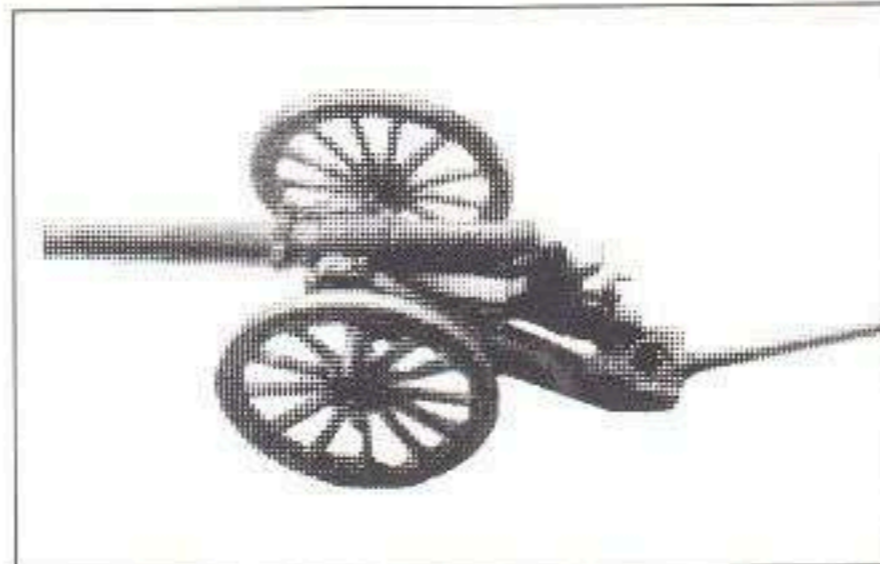
**ME/G/19 GATLING GUN U.S. MODEL 1865**  
The model is of the 6 barrelled 1" calibre version mounted on the U.S. army campaign carriage of the period. It was capable of firing 200 rounds per minute using normal black powder propellant.



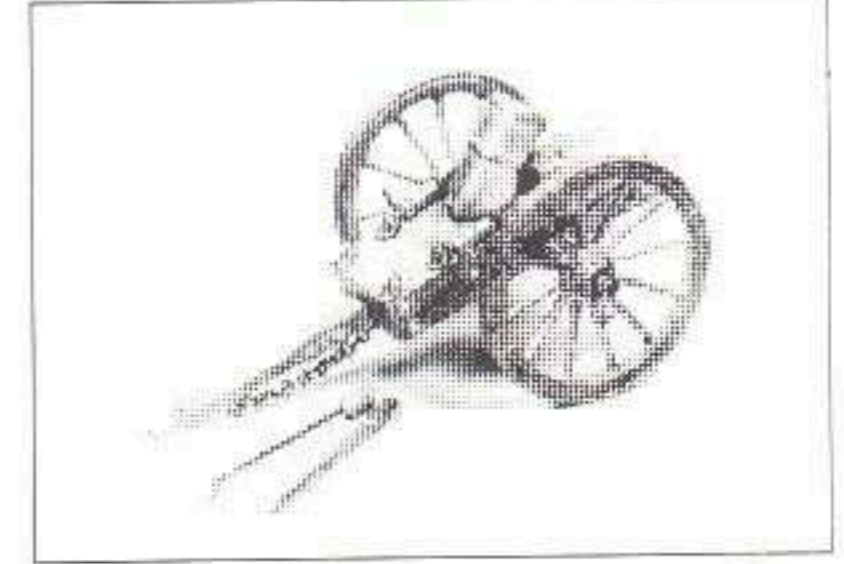
**ME/G/32 BRITISH COLONIAL WARS 9PDR MUZZLELOADING GUN**  
Used by field batteries in the later decades of the 19th Century, this gun had an effective range of 1400yds.



**ME/G/20 BRITISH 18PDR GUN 1800-1860**  
This is a model of the 18pdr iron gun with an extreme range of 2200 yards using 6lbs of powder. It was used for reduction of fortress defences or a heavy field gun and enjoyed much success before being replaced by 24 and 32 pdr's.

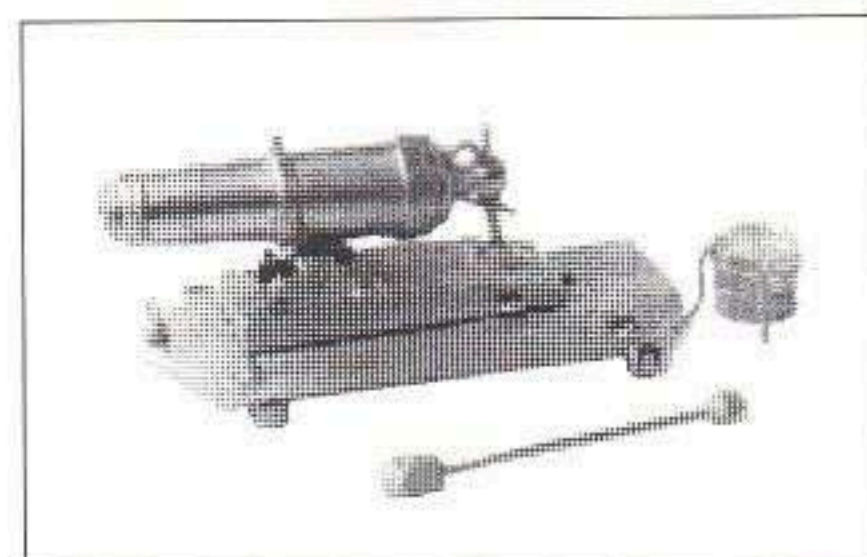


**ME/G/15 THE BRITISH COLONIAL 2.5" RIFLED MUZZLE LOADER SCREW GUN**  
Introduced in 1880 the 2.5" R.M.L gun was designed to replace the 7pdr R.M.L gun and was used principally in the Indian mountain batteries.

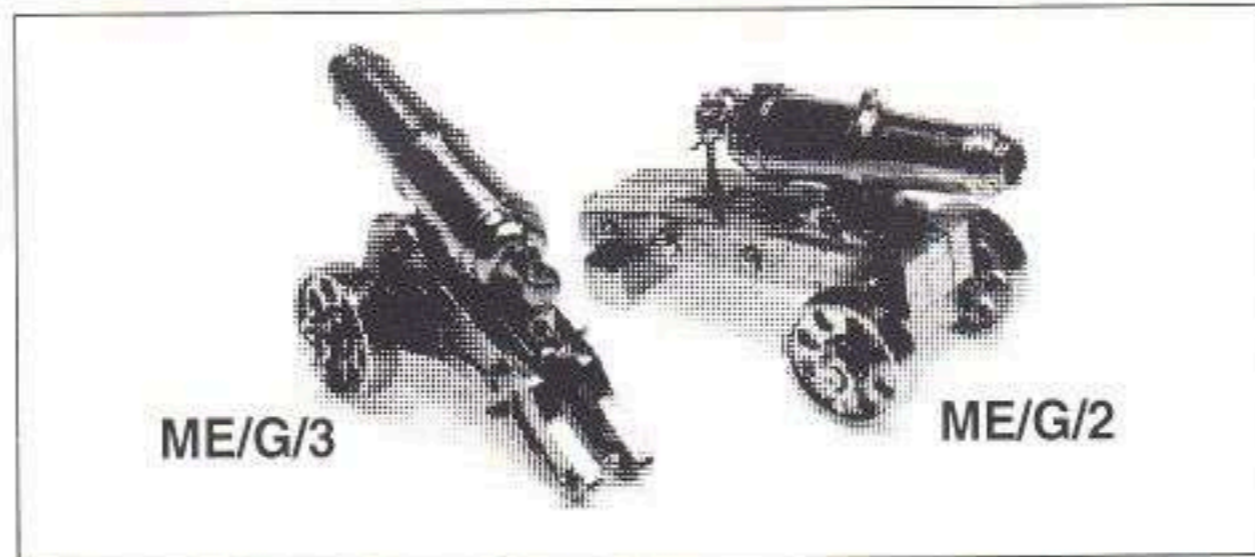


**ME/G/10 BRITISH 5.5in MORTAR**  
The model is shown on the early 19th Century carriage as used by foot and horse artillery batteries at the Battle of Waterloo.

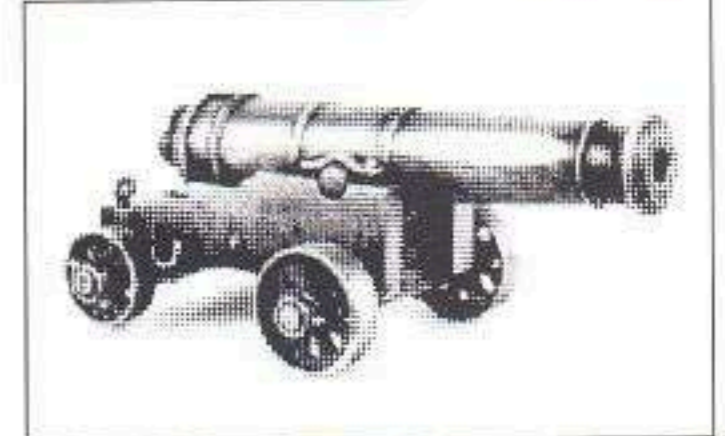
## 19th CENTURY NAVAL AND GARRISON GUNS



**ME/G/25 BRITISH 32PDR NAVAL CARRONADE**  
From 1780-1850 this gun was used on a naval style carriage to give heavy although short range firepower to smaller Royal Navy ships.



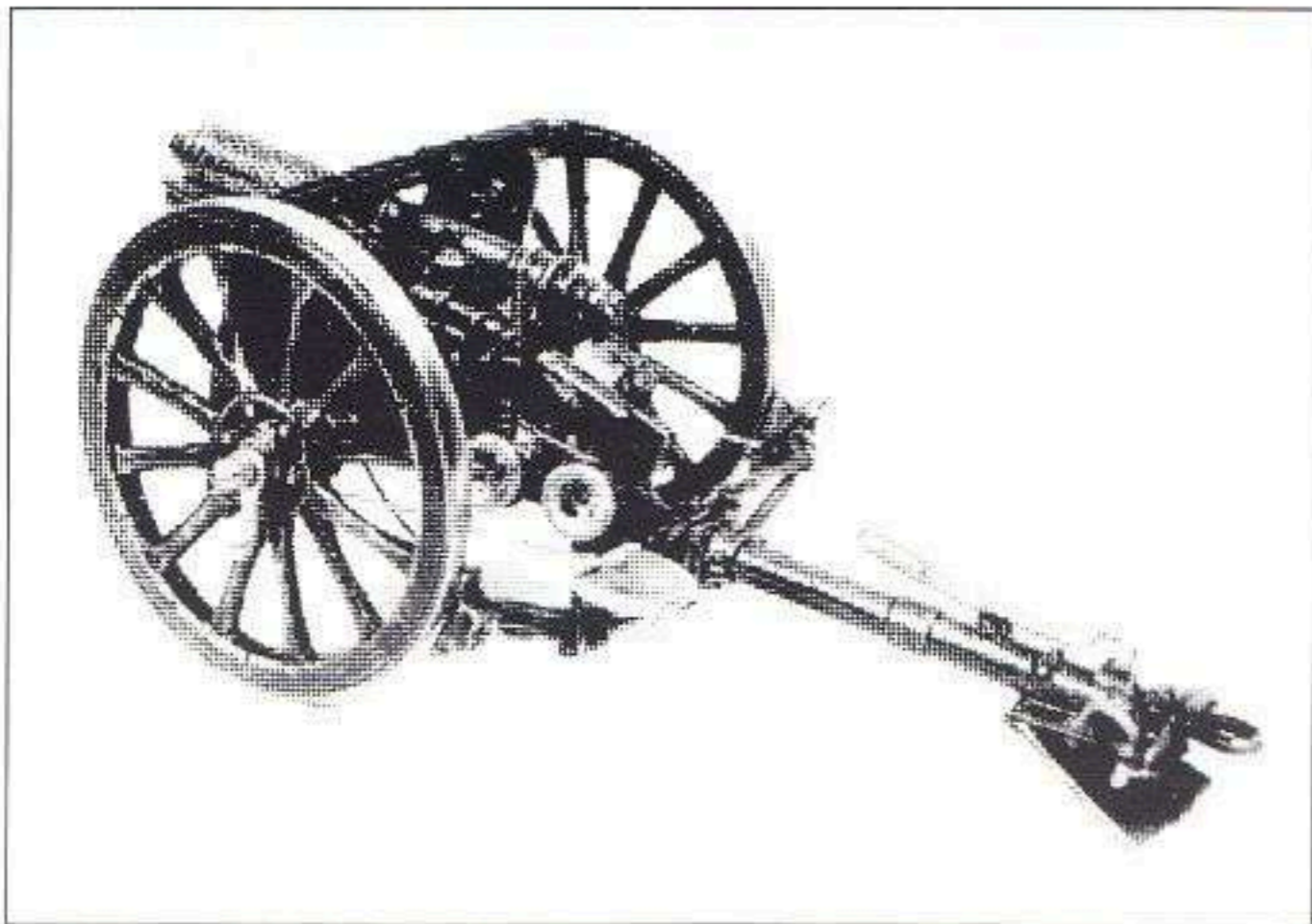
**ME/G/2 BRITISH 32PDR CARRONADE**  
These guns on a wooden Garrison mounting- Introduced towards the end of the 18th Century, these guns saw service until the second half of the 19th Century. The wooden carriage was essentially a fighting carriage only used in times of active service or emergency otherwise iron carriages were used.  
**ME/G/3 BRITISH 32PDR CARRONADE**  
- Iron carriage used from 1780-1866 the model shows this effective weapon as it would be seen.



**ME/G/22 BRITISH 18PDR GUN**  
This muzzle loading gun is mounted on the wooden carriage with which it was manufactured when in Garrison use.  
**ME/G/23 BRITISH 18PDR NAVAL GUN**  
As ME/G/22 but with wooden wheels as used by the Royal Navy 1780-1860.



# WW1 Artillery



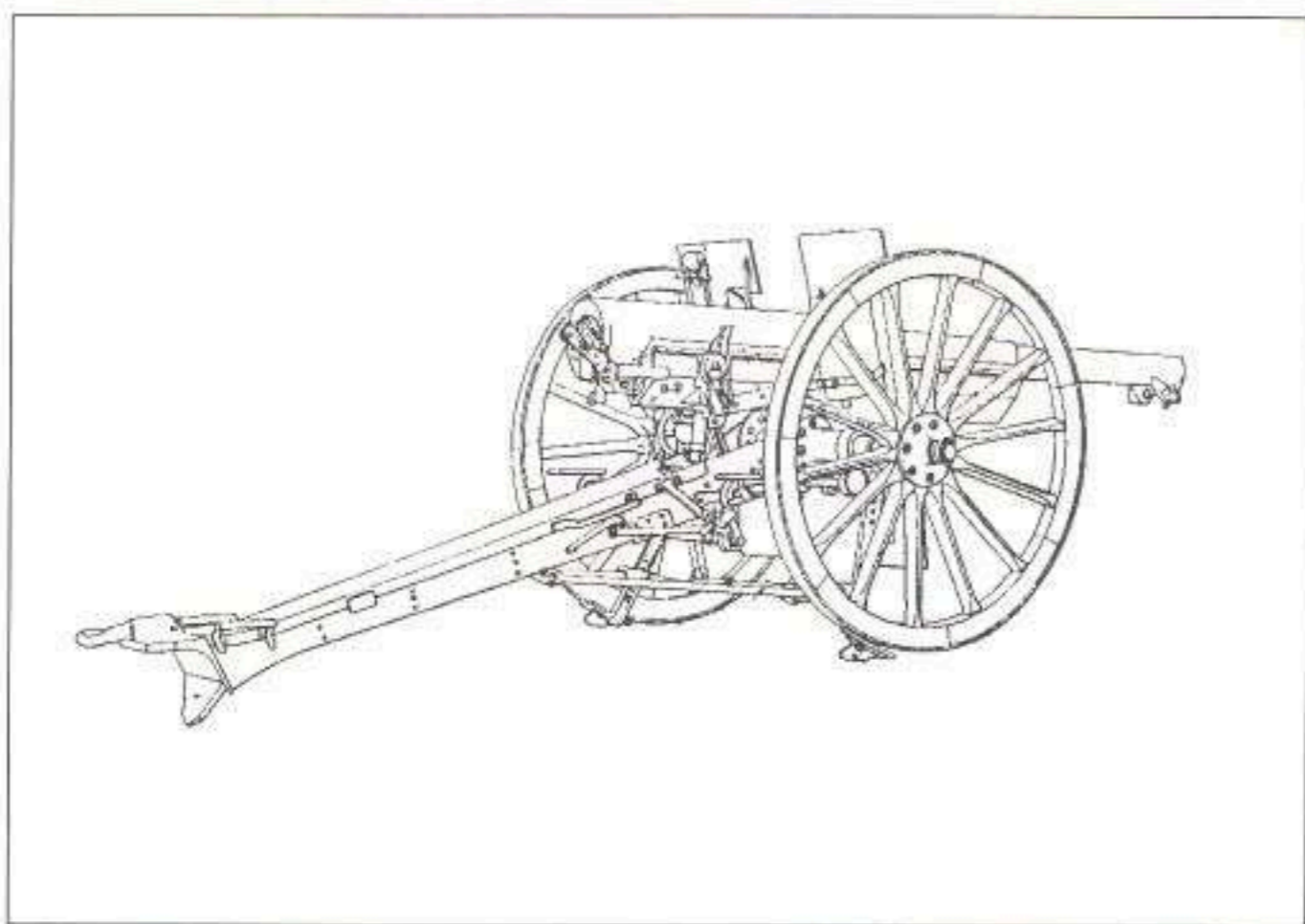
## ME/G/13 BRITISH 13PDR FIELD GUN

This gun was issued to Horse Artillery Batteries during WW1, proving an effective and durable support weapon.



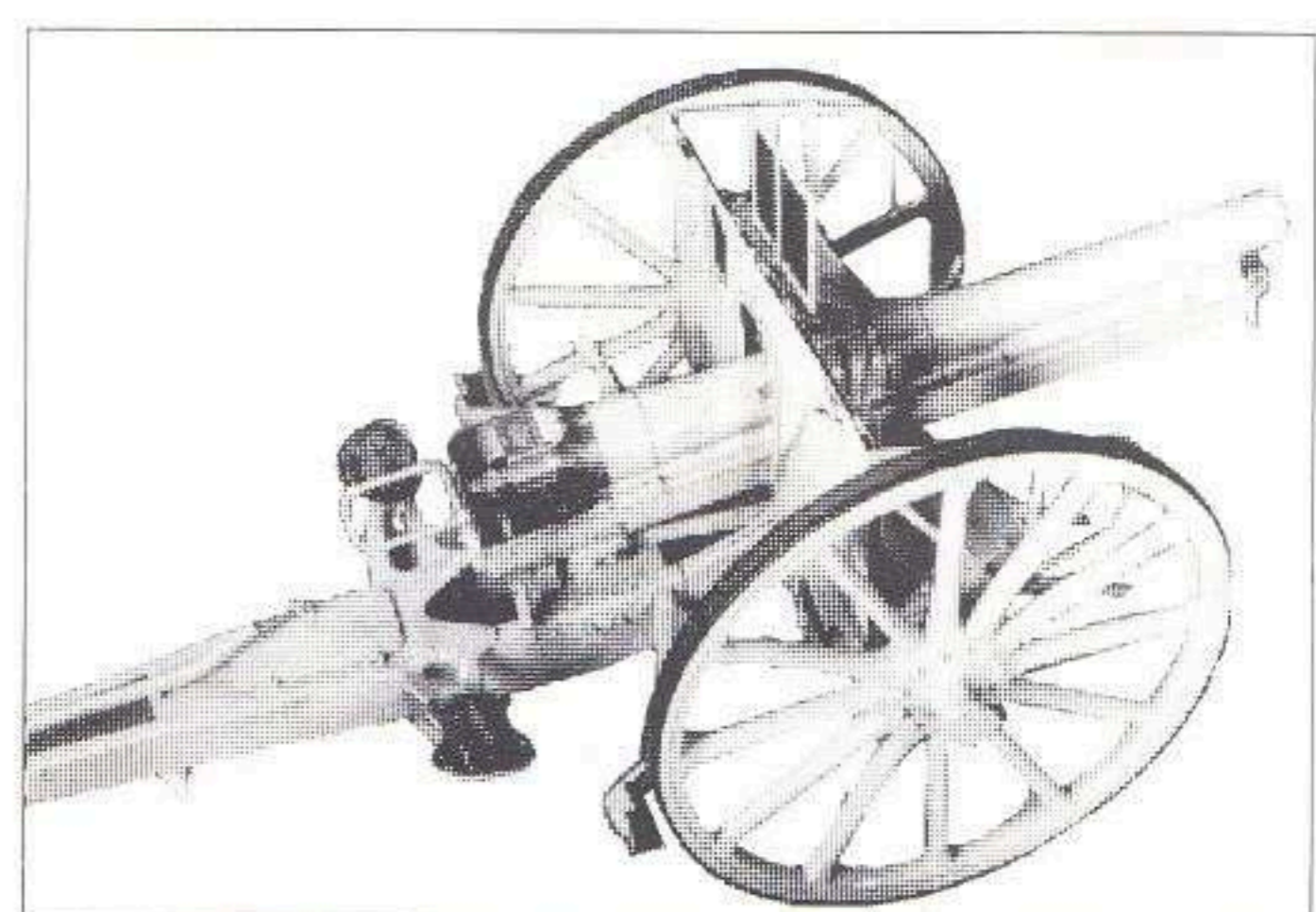
## ME/G/9 BRITISH 18PDR FIELD GUN

Issued to the British Army in 1904 it was the heaviest calibre field gun available to the Army at the beginning of WW1.



## ME/G/43 FRENCH '75'

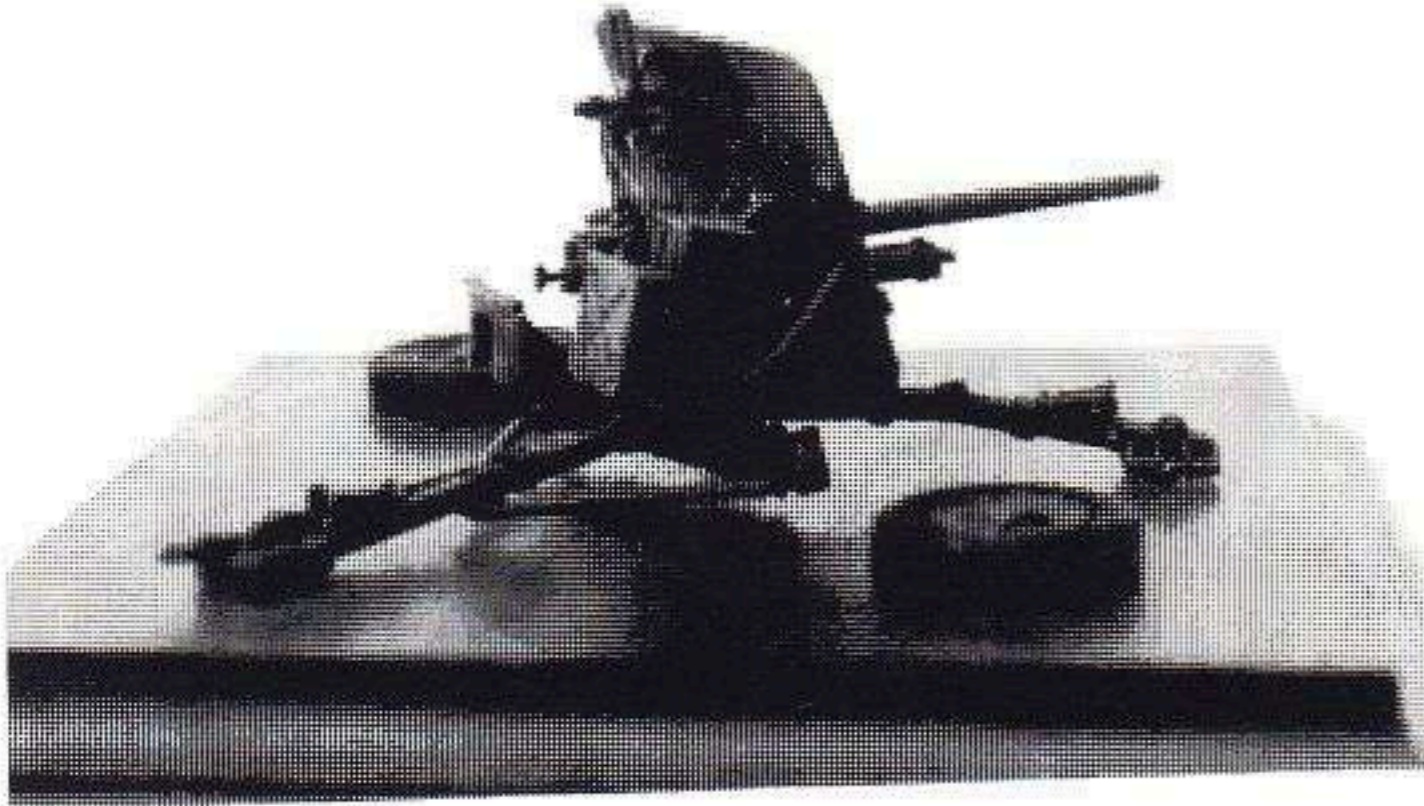
The next model to be released in February 1992 is this truly classic medium artillery gun. Mainstay of the French medium artillery 1900-1940. It was used by many other nations and its revolutionary recoil system laid the foundation for modern artillery.



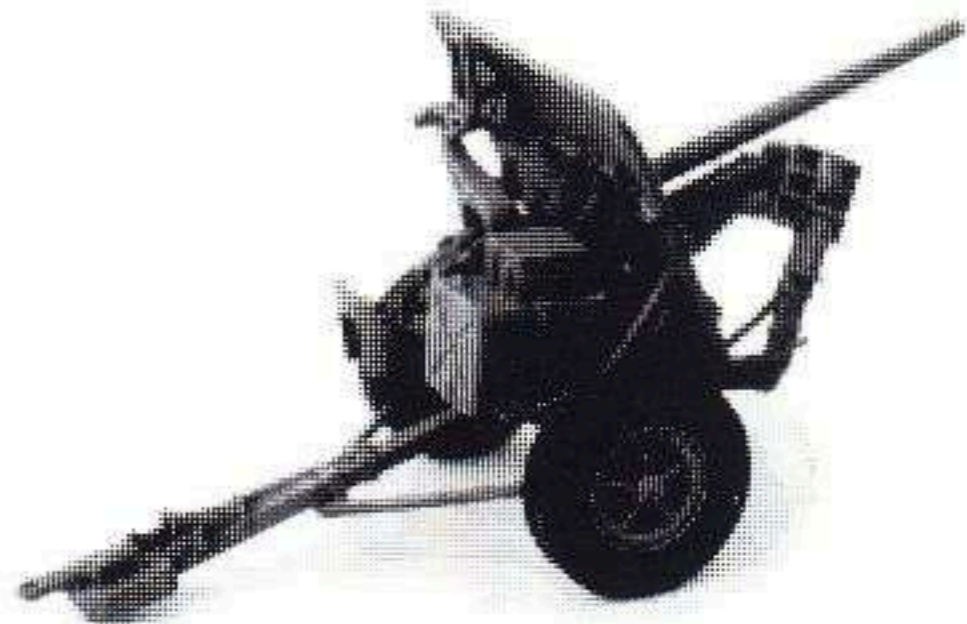
## ME/G/44 GERMAN 7.7cm FIELD GUN

The 7.7cm gun was the mainstay of the German support artillery in WW1. This particular gun is a model of the gun which was captured at the Battle of Cambrai. In a gallant action, the crew disabled two British tanks (then a fearsome new weapon) before being overwhelmed.

# British WW2 Artillery



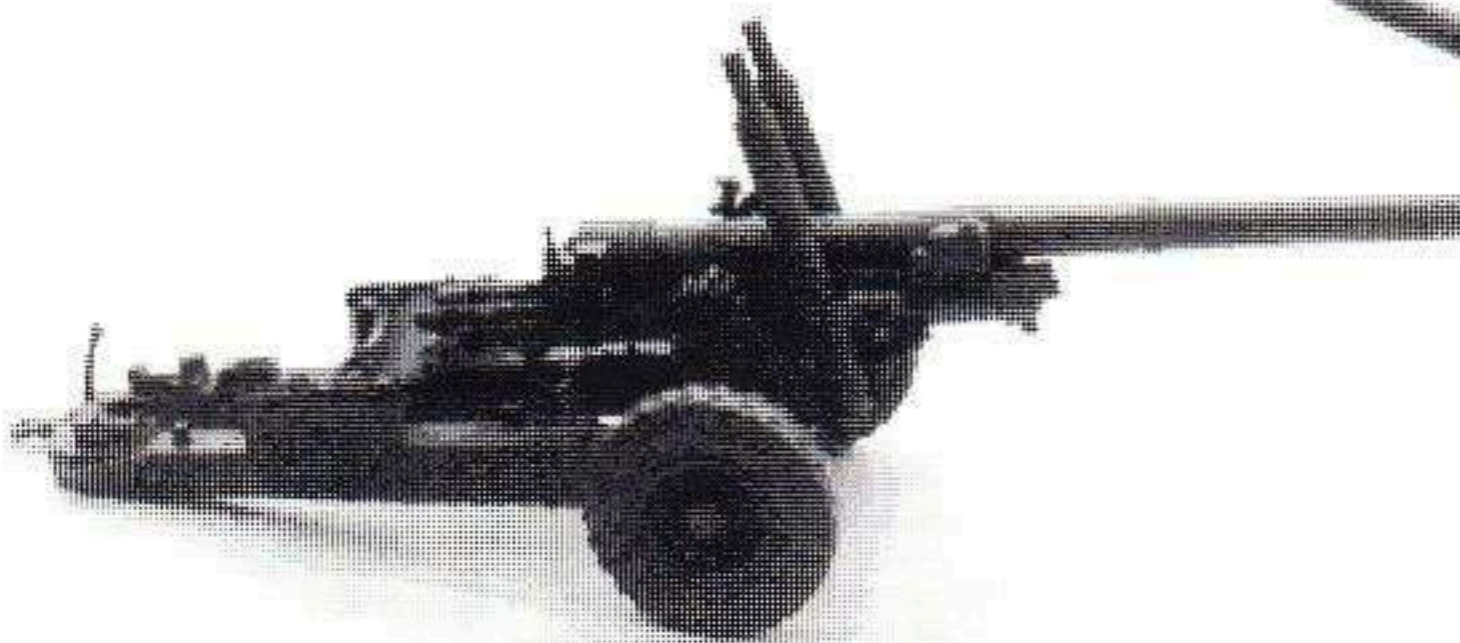
FIRING POSITION



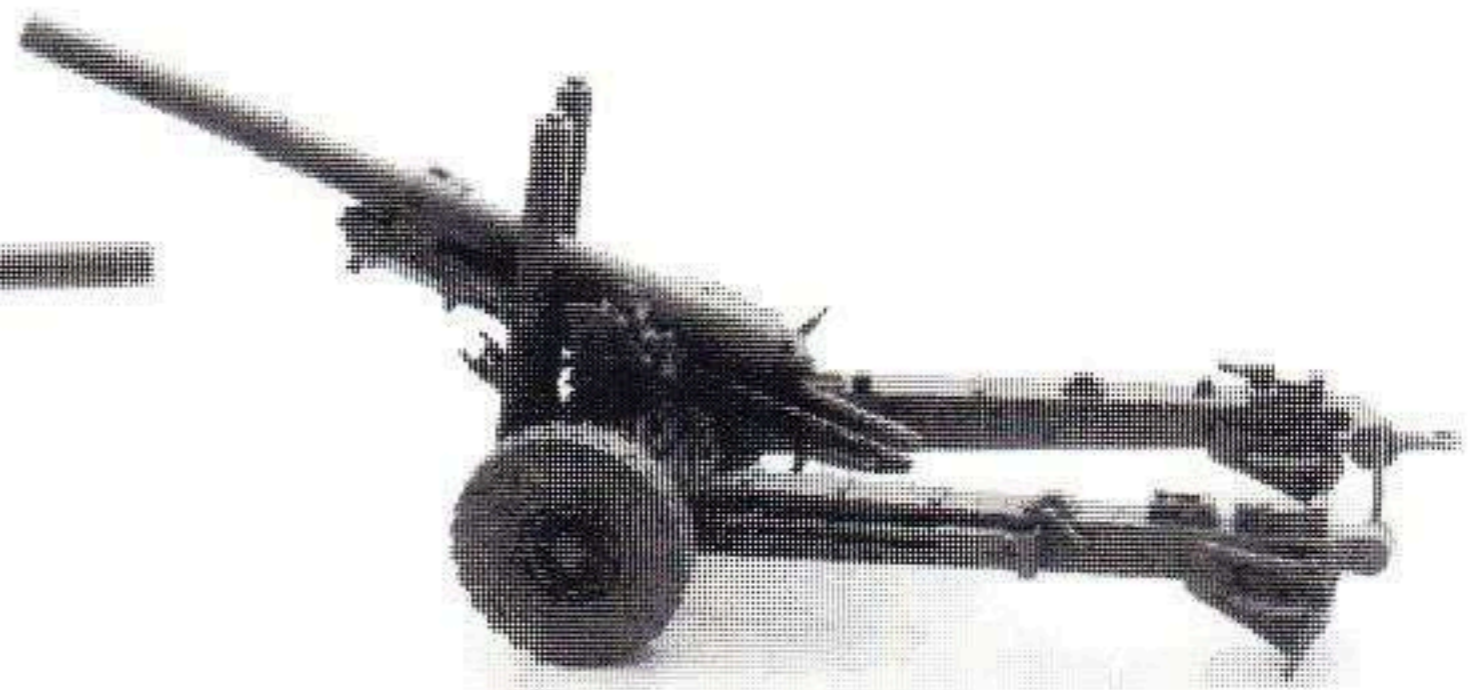
TOWING POSITION

## ME/G/35 BRITISH 2PDR ANTI-TANK GUN

This weapon was issued to the British Army and Allied Forces from 1936 to 1945. It formed the main anti-tank weapon for the early years of the Second World War. The kit may be assembled in the towed or firing positions as shown above. It may also be used to provide a 2pdr portee unit when used in conjunction with kits from other manufacturers.



TOWING POSITION



FIRING POSITION

## ME/G/34 BRITISH 5.5in MEDIUM GUN

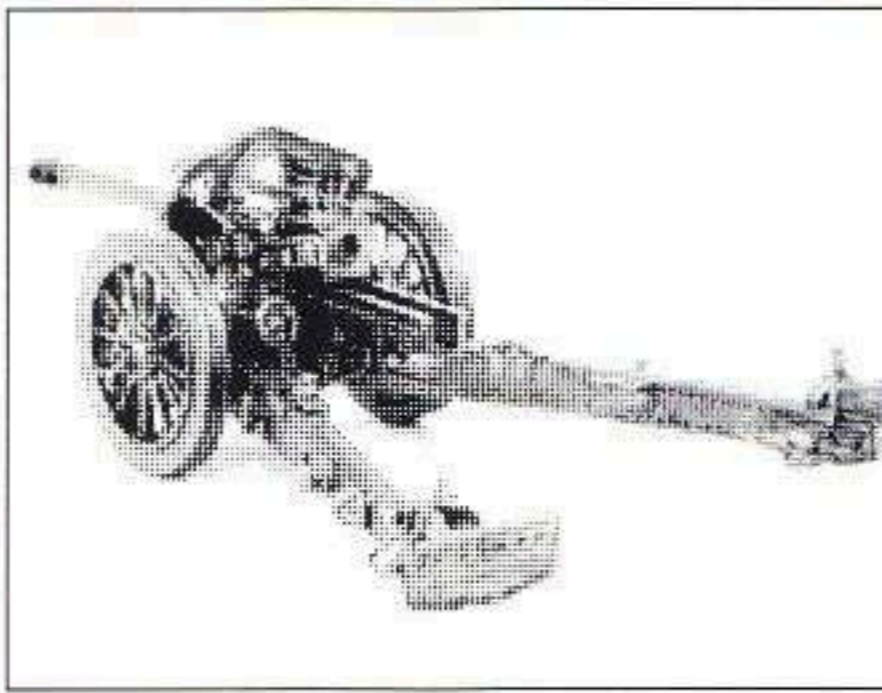
This weapon entered production in 1941 and was first used in 1942 in the Desert War. It served the British Army well, finally being retired in 1980. It is still used by the armies of several other nations today. The model may be constructed in the firing or towing positions.

# German WW2 Artillery



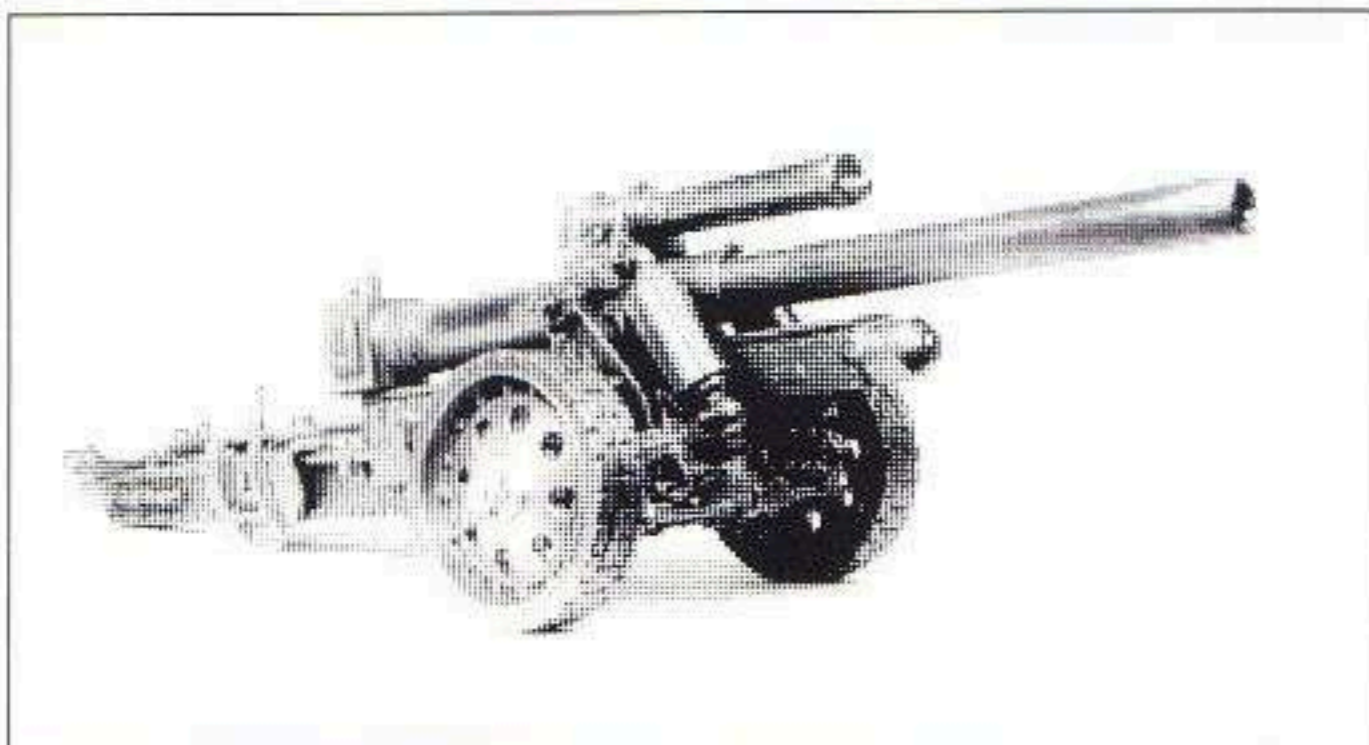
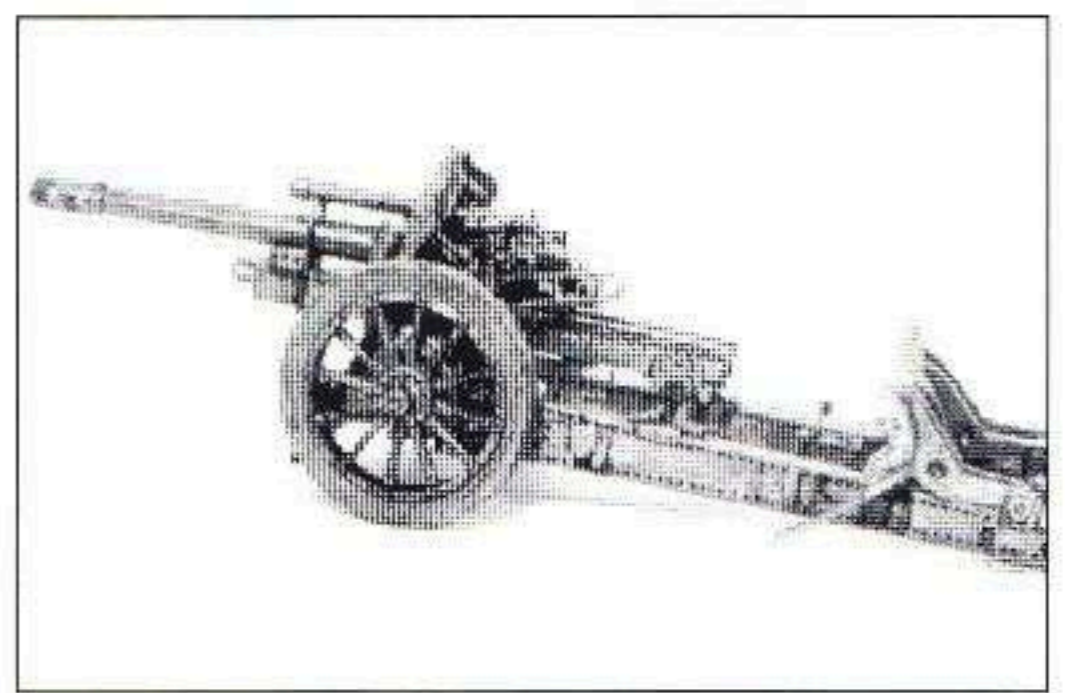
**ME/G/26 GERMAN WW2  
2cm FLAK 30**

Developed in the 1920's this gun saw action on all fronts during the war with later variants having quadruple barrels, thus proving more formidable to low flying ground attack planes. The model produces a ground mounted Flak 30, but it was fitted to many wheeled and tracked vehicles to provide self propelled mobility.



**ME/G/29 GERMAN 105mm LFH FIELD HOWITZER**

This gun formed the mainstay of the medium field artillery units throughout WW2. Used on all fronts it was an effective weapon which could be horse drawn or vehicle towed.



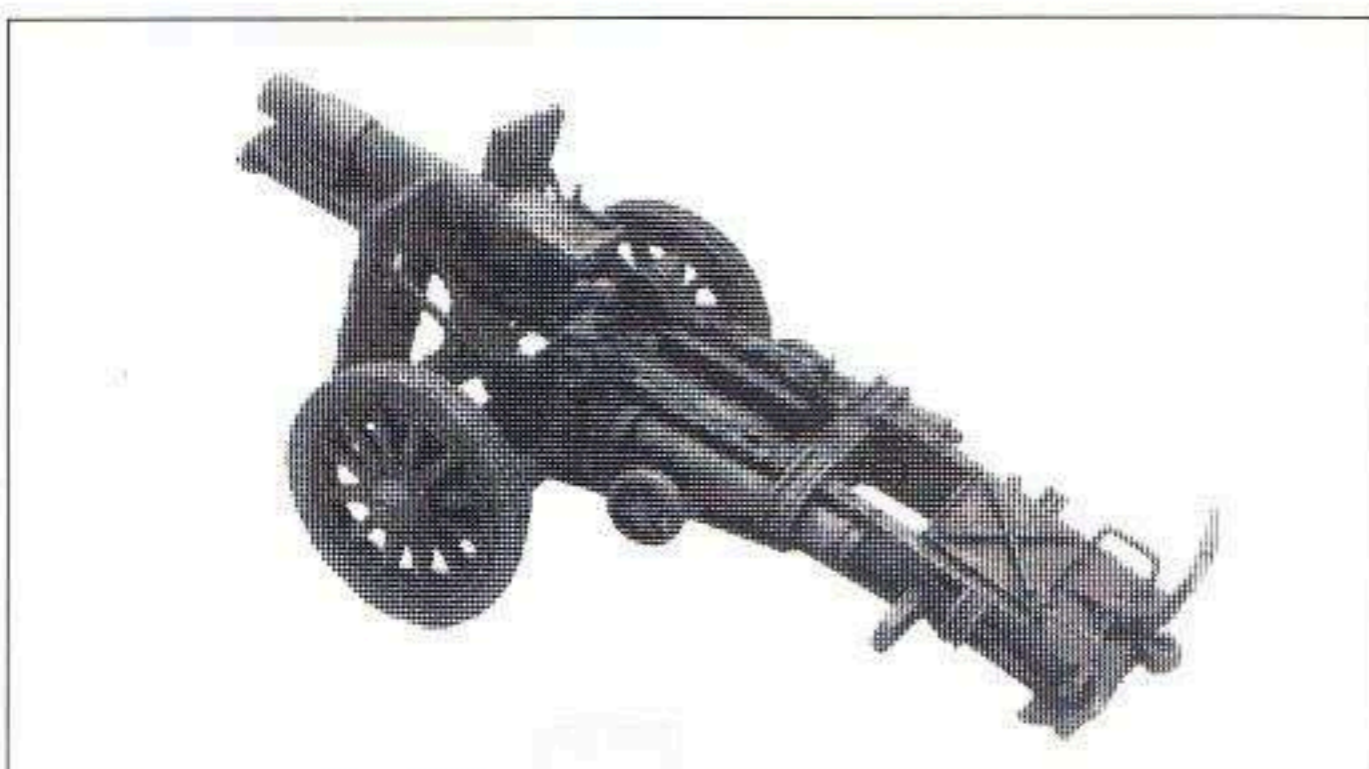
**ME/G/21 150mm LFH FIELD HOWITZER**

Issued to the heavy artillery batteries of the German Army in WW2, this gun was a modern design. If the towed version is required a MEL 5 artillery limber should also be purchased.



**ME/G/ 28 GERMAN WW2 8.8cm PAK  
43/41 ANTI TANK GUN**

Was born out of need for a harder hitting gun to knockout more heavily armoured tanks. In this role it proved both accurate and successful, but it's weight proved a disadvantage in rapidly moving armoured warfare.



**ME/G/ 33 15cm S.I.G 33**

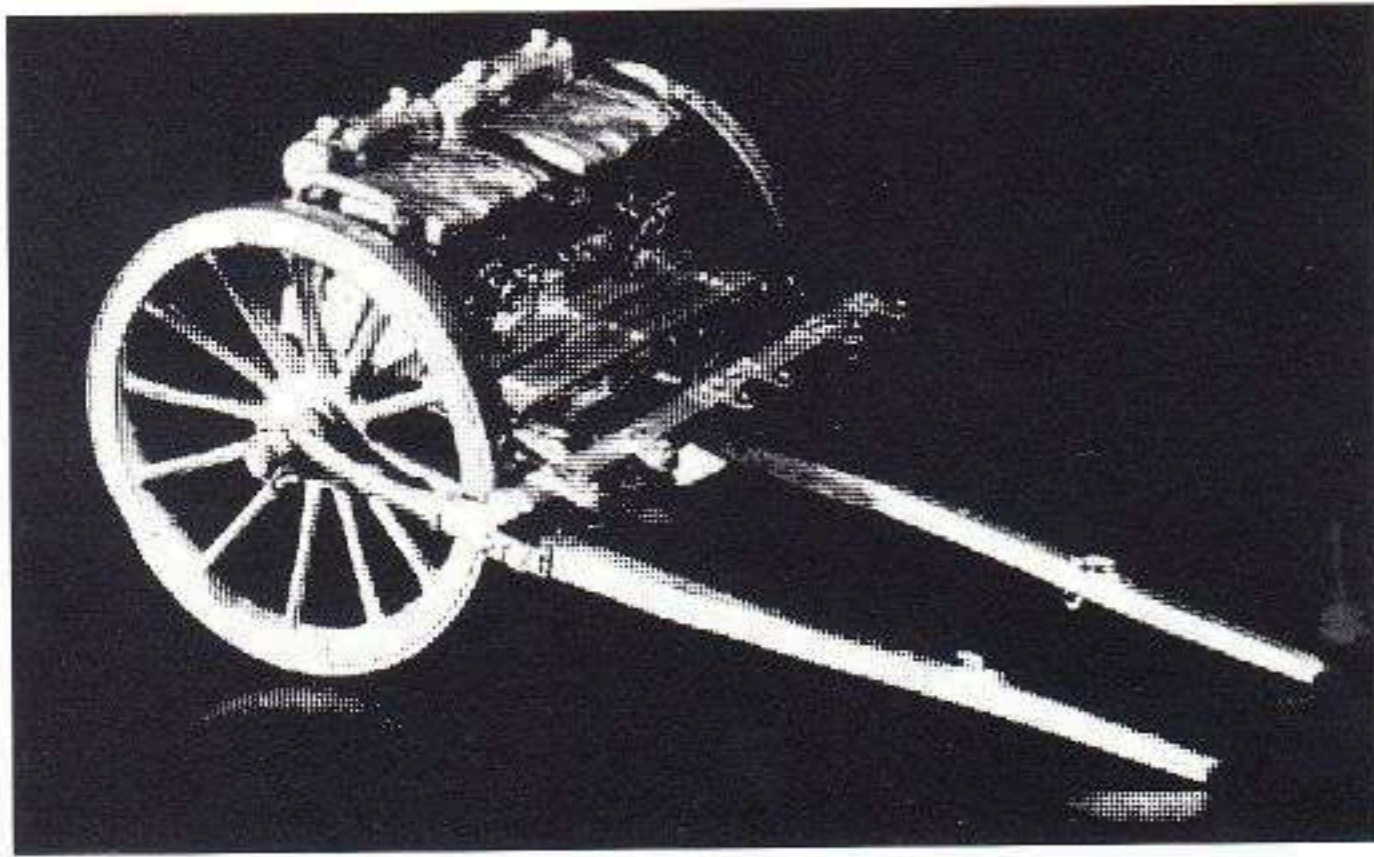
Entered service in 1933 and was the heaviest of the German Infantry guns remaining in service throughout WW2. Normally horse drawn, it was so successful that it was later given a mobile carriage by placing the weapon on obsolete light tank chassis.



**ME/G/ 36 PAK 38 50mm A.T. GUN**

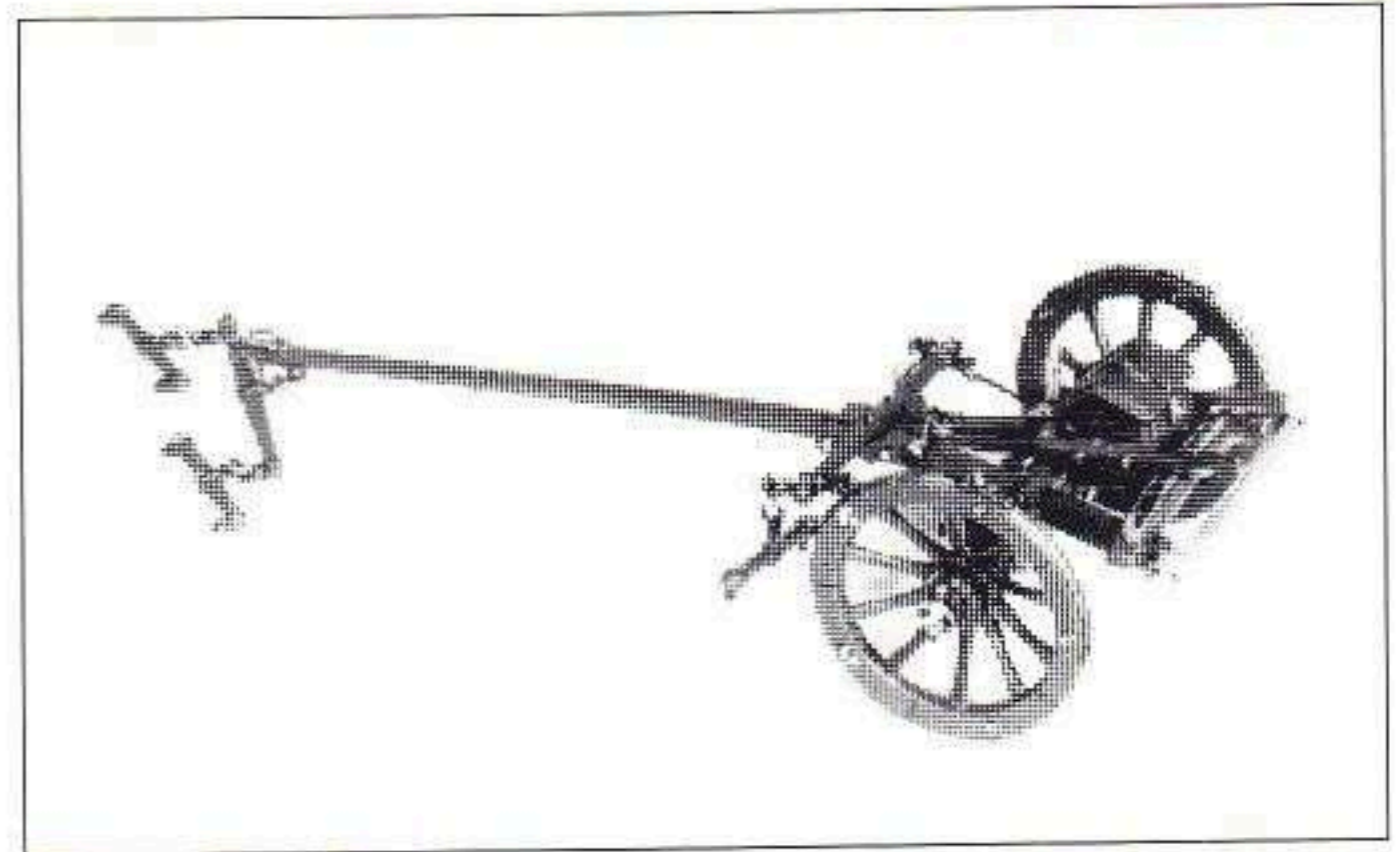
This weapon was produced to counter the more heavily armoured tanks and was first used in the Greek and Libyan Campaigns 1941. It was the most widely deployed German anti-tank gun, being in service on all fronts until 1945.

# Artillery Limbers



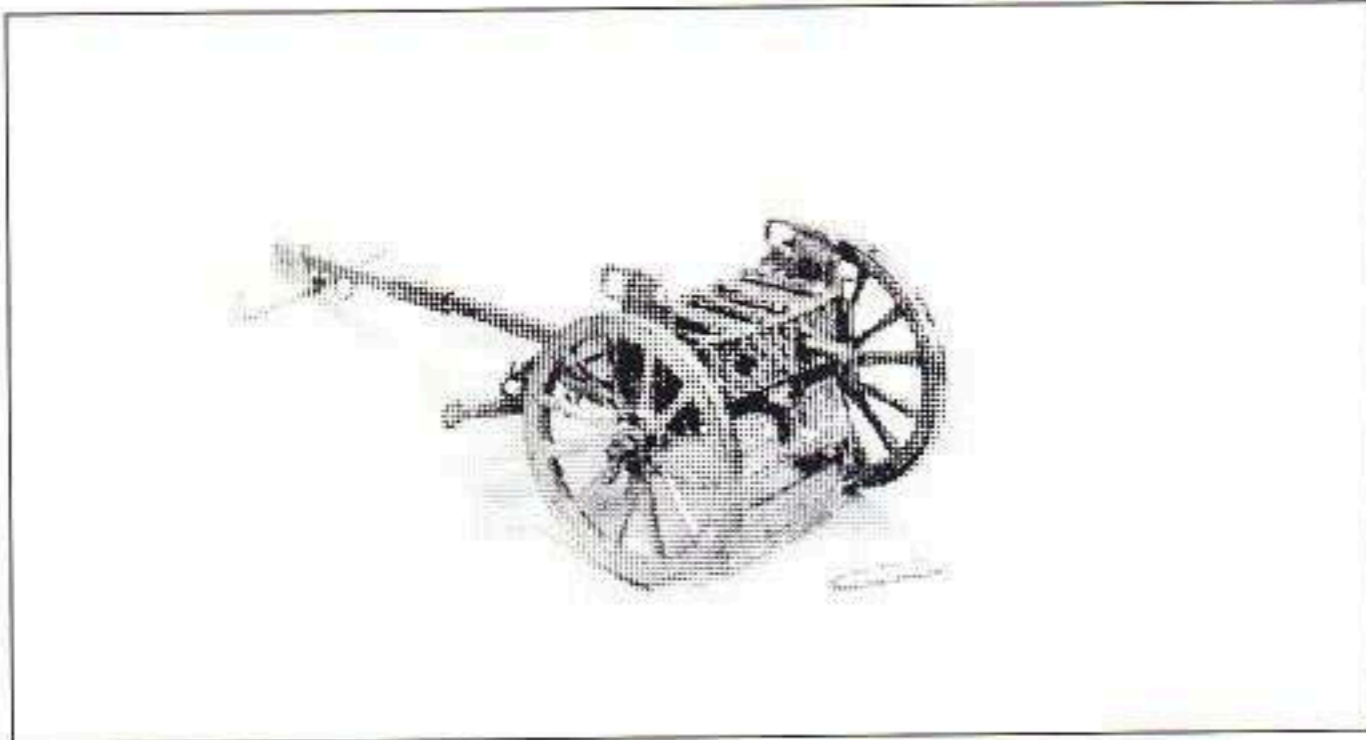
## MEL 1 BRITISH LIMBER

This was the standard gun limber for the British Army. Artillery units from the Napoleonic Wars to the late Crimean period.



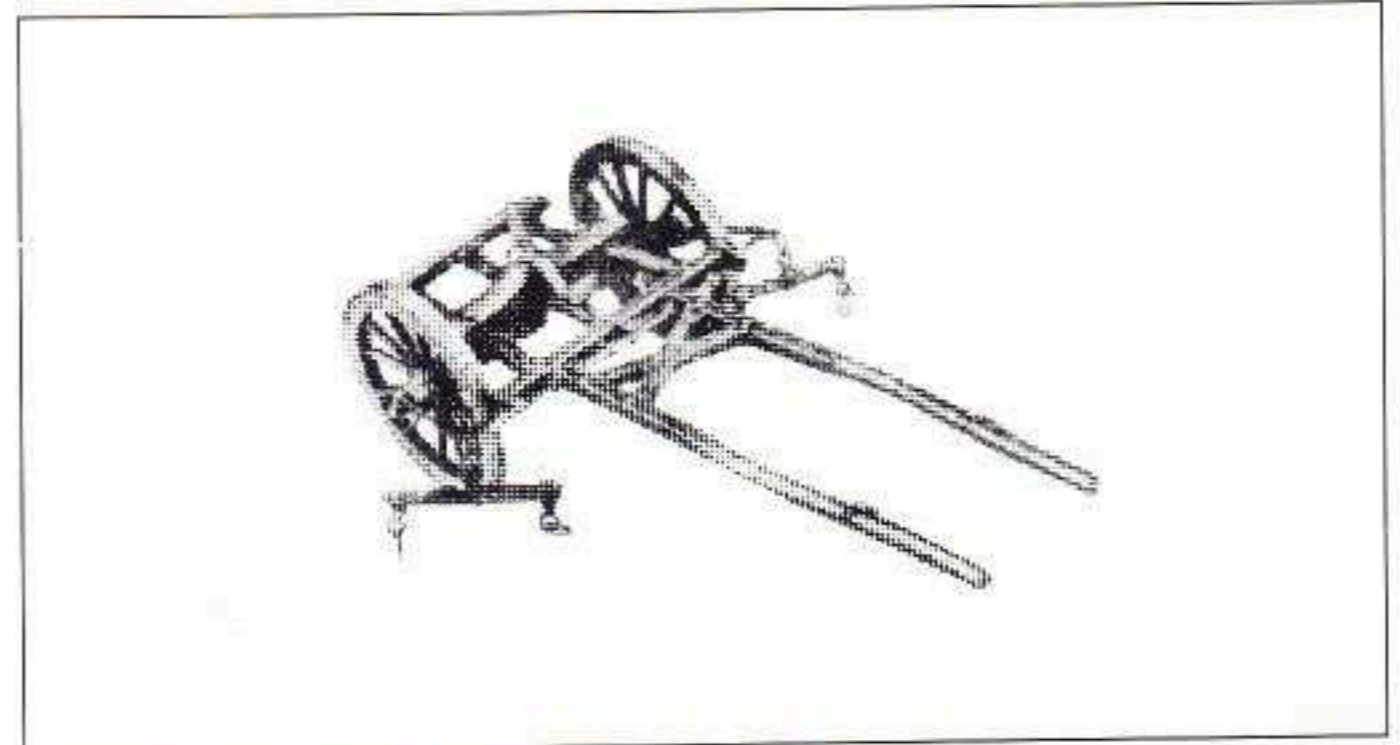
## MEL 2 FRENCH NAPOLEONIC LIMBER

Was used for a variety of guns during the Napoleonic era including the 4pdr, 8pdr, 12pdr guns and the 6" and 8" Howitzer's.



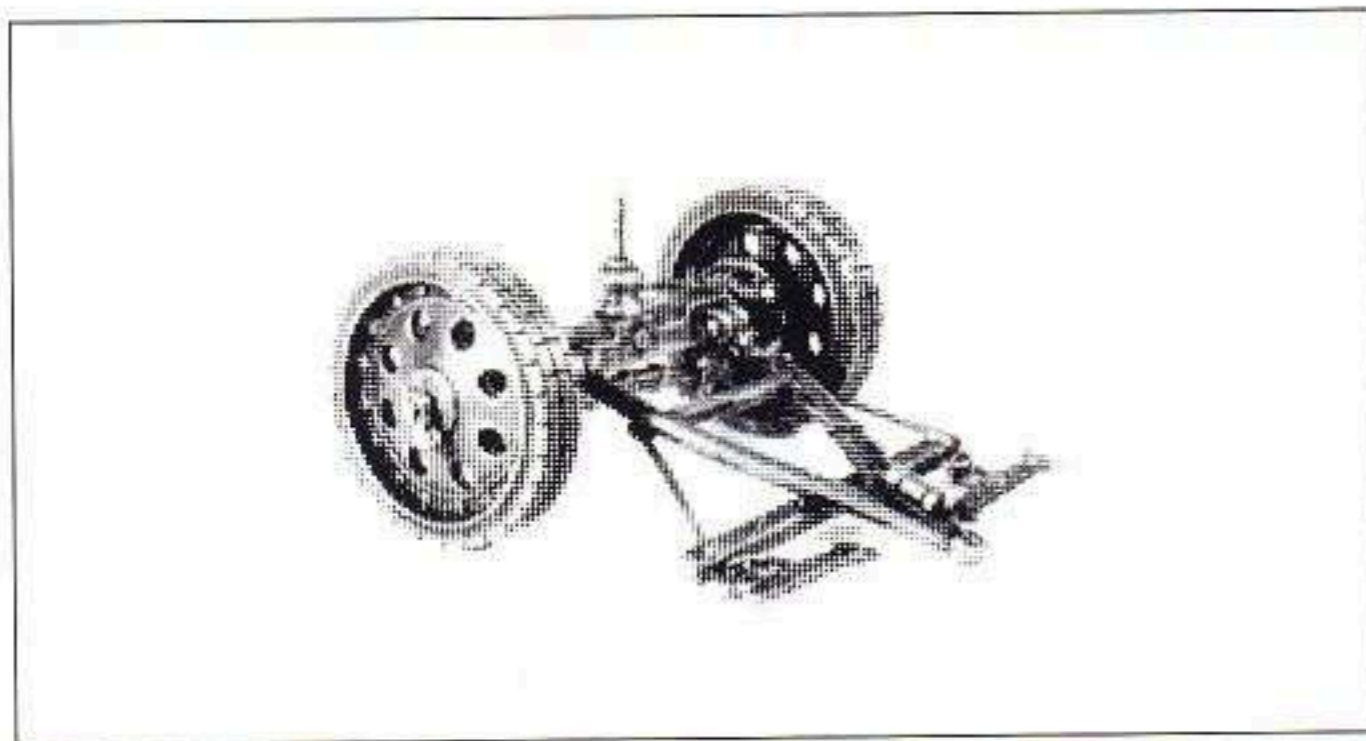
## MEL 3 BRITISH WW1 13 & 18PDR GUN LIMBER

Introduced in the early 20th Century. This unit was the standard field artillery limber until the mid 1920's.



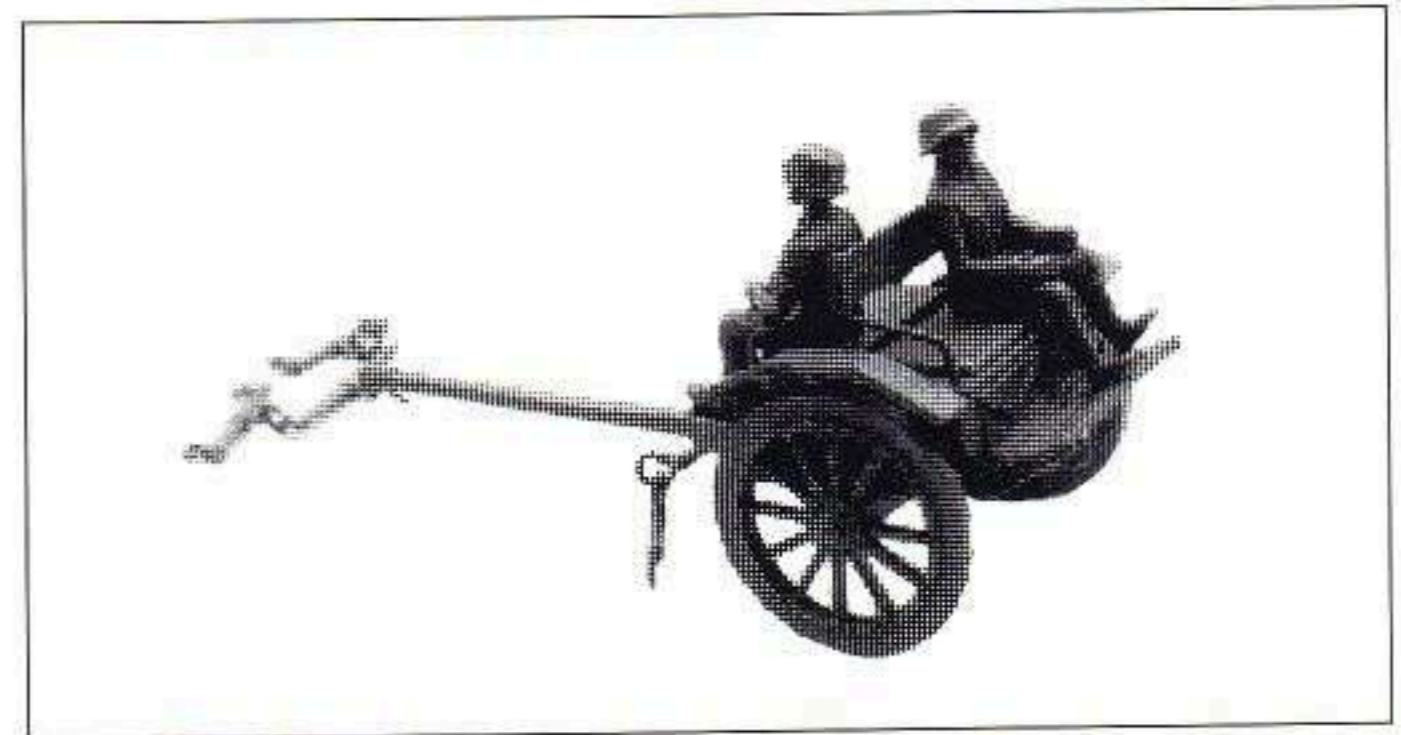
## MEL 4 BRITISH HEAVY GUN LIMBER WATERLOO / CRIMEA

Used for the first 60 year's of the 19th Century it had a very simple construction and could be adapted to two forms - draught horse teams, or teams three abreast. Elephant draught could be used as in the Indian Mutiny Period.



## MEL 5 GERMAN WW2 HEAVY GUN LIMBER

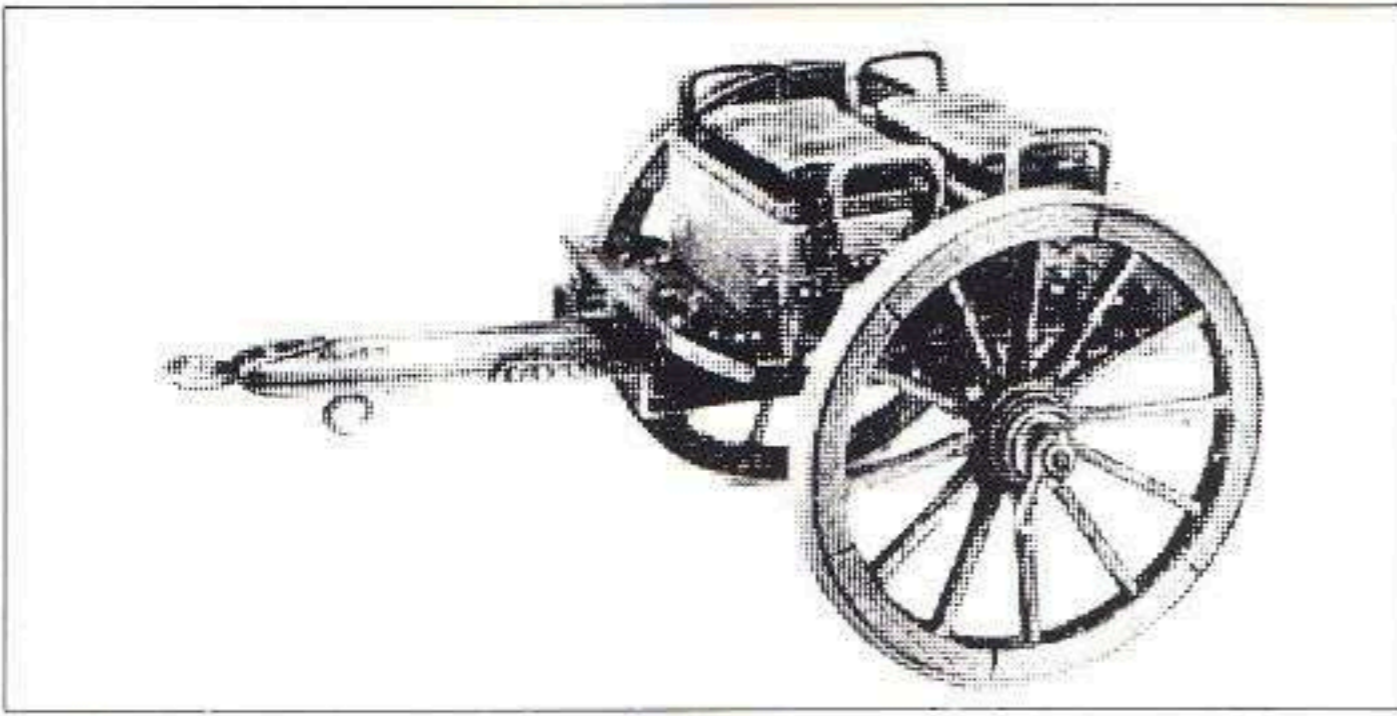
This limber was developed for the heavy long range artillery pieces of WW2. It should be used for the ME/G/21 model of the 150mm LFH gun.



## MEL 6 GERMAN WW2 MEDIUM FIELD ARTILLERY LIMBER

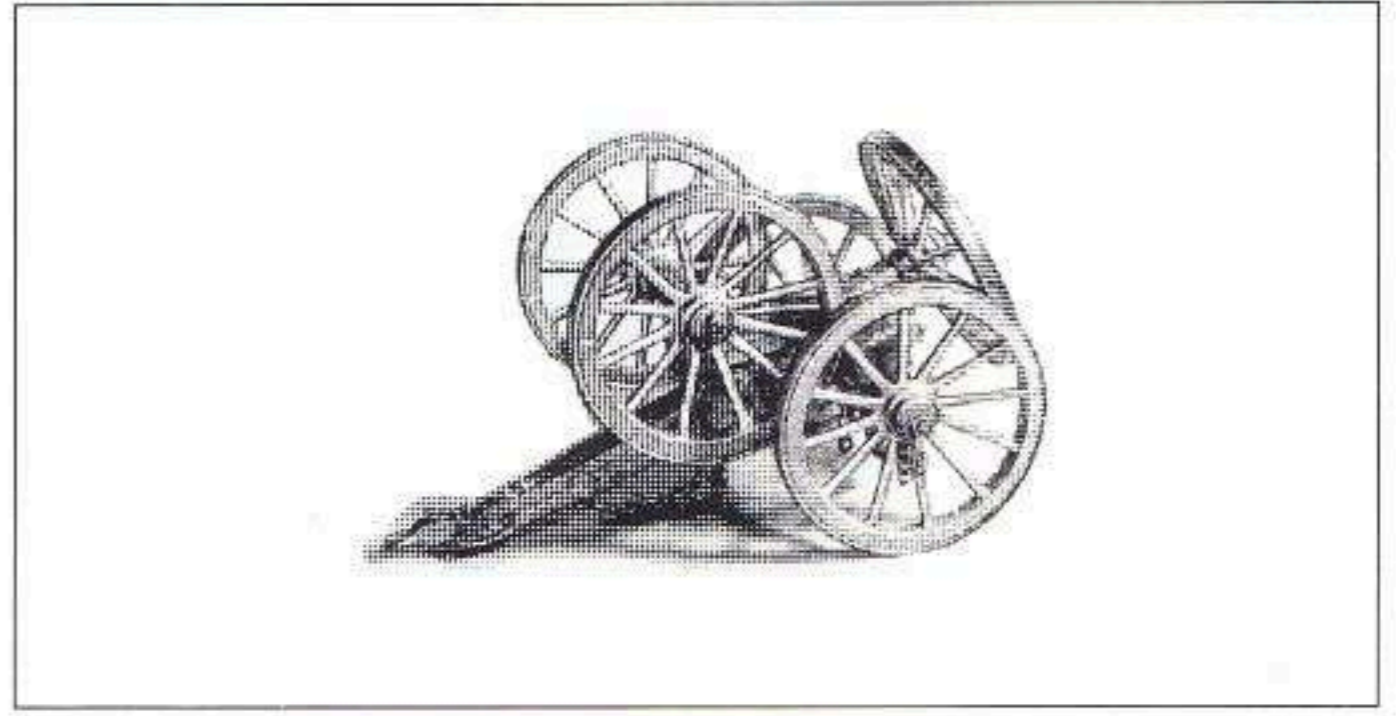
This limber could be horse or vehicle drawn and was widely used by the German Army. It could be used for ME/G/28 PAK 43/41, ME/G/29 105mm LFH field gun or ME/G/33 SIG 33 Infantry gun. The model is provided with two artillery gun limber riders.

# Ancillary Artillery Equipment



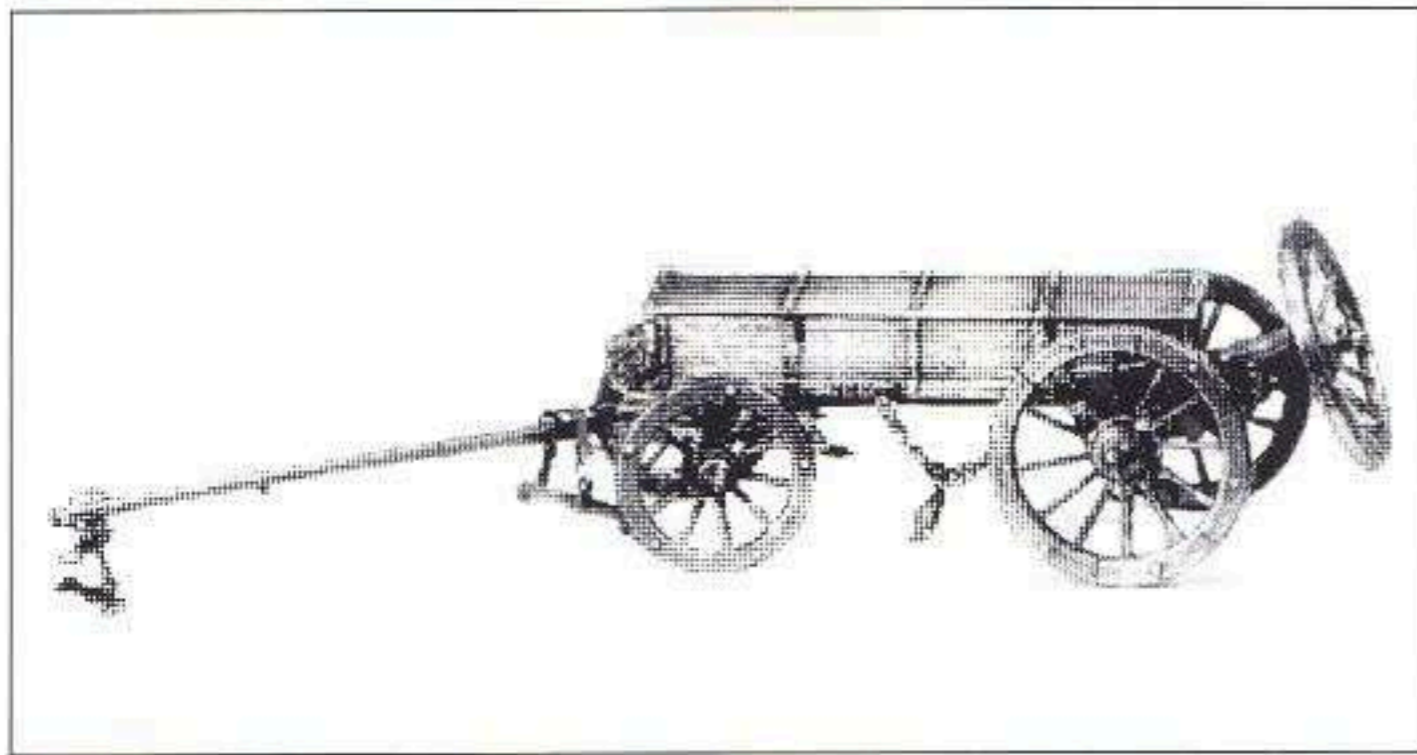
## ME/W/2 BRITISH AMMUNITION WAGON

This wagon was hooked behind the British limber (ME/L/1) and was an important feature of the British Artillery system of the first half of the 19th Century.



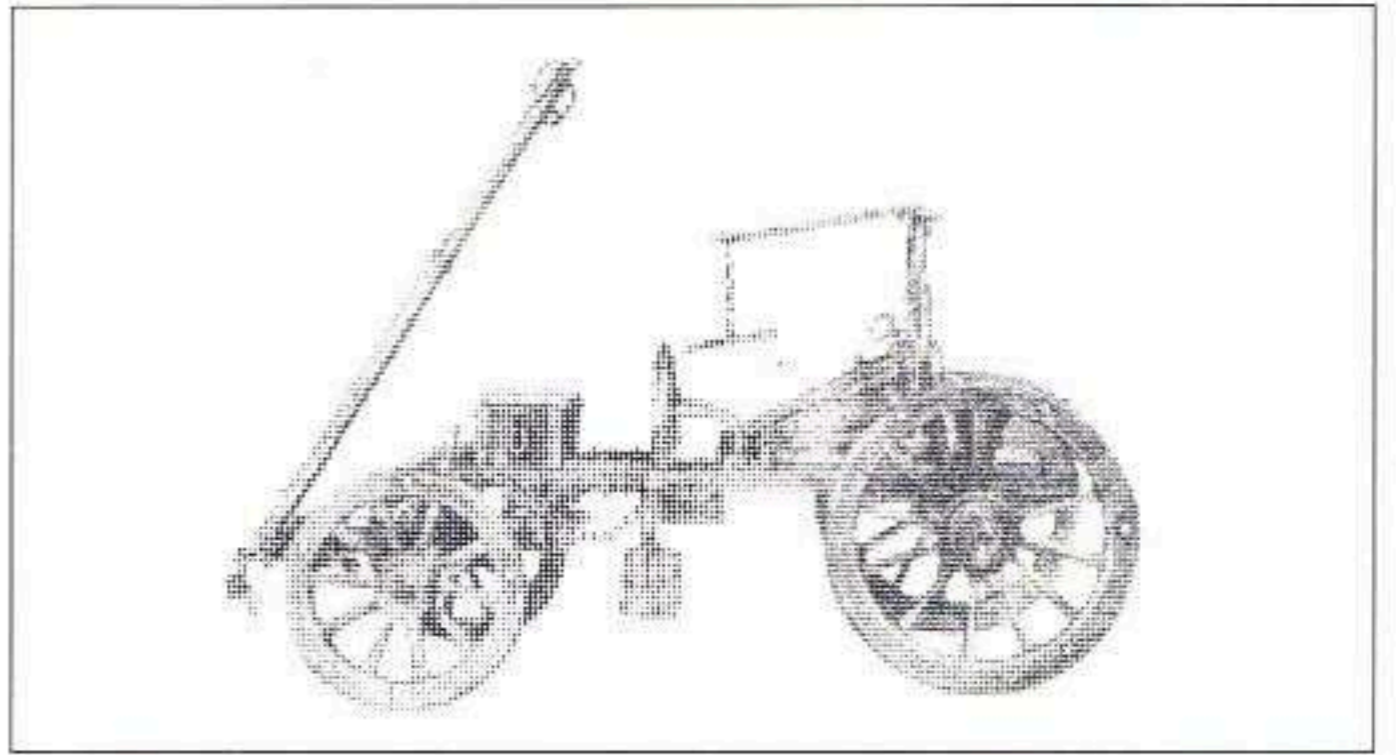
## ME/CA/1 BRITISH SPARE WHEEL CARRIAGE (WATERLOO / CRIMEA PERIOD)

Essentially the carriage of the British 9pdr, but was used also to carry spare wheels. This vehicle was a common sight as the poor road surfaces or the period demanded a large reserve of spare wheels to maintain the mobility of all army units.



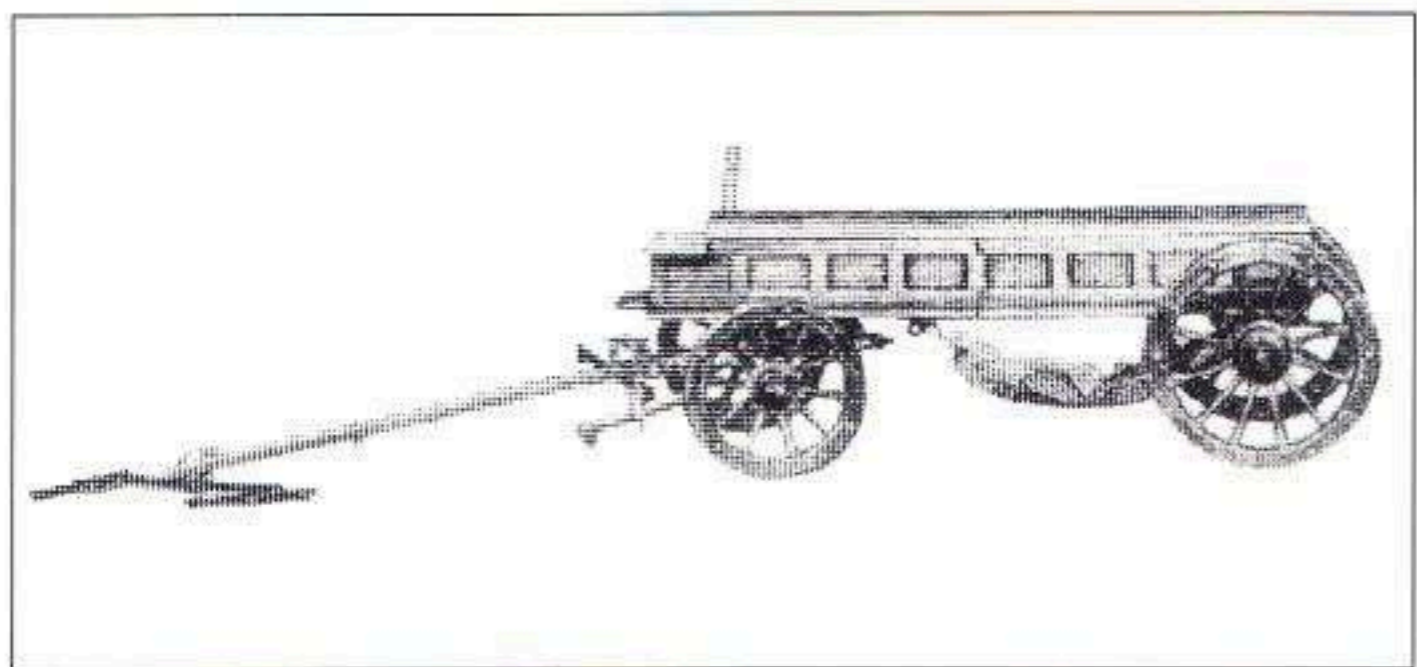
## ME/W/1 AMMUNITION CAISSON

Ammunition caissons were used by the Napoleonic Armies in large numbers not only as many ammunition carriers for guns of the Gribeauval system, but also as small arms carriers for Infantry.



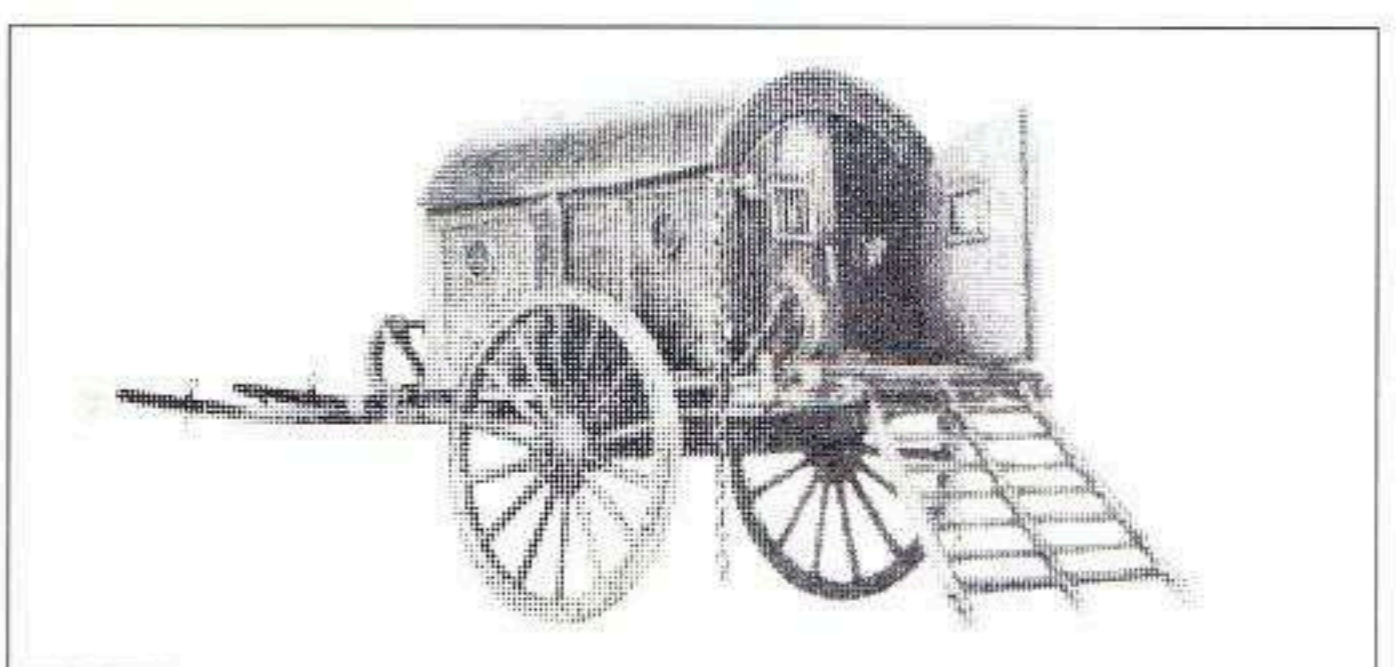
## ME/W/3 NAPOLEONIC FORGE DE CAMPAGNE

Used extensively through the Napoleonic era. In the British army there was one forge to every battery and they were normally centre of exchange for gossip in the cavalry and artillery units.



## ME/W/4 "WURST WAGON"

Was a type of ambulance used for lightly wounded soldiers. The main body was used for the carriage of medical supplies and the hammocks for the wounded. The vehicle was mainly used by the army of the Rhine and went out of service after 1810. Lightly wounded soldiers could also sit astride the carriage body cavalry style.



## ME/CA/2 FRENCH NAPOLEONIC LARRY LIGHT AMBULANCE

This was a unique vehicle developed by Dominique Jean Larrey for medical care and specialised transport for the wounded of the early 19th Century armies.

# Figures and Accessories

Listed below are the figures and horses which are available as separate items if required. Whilst it is a saving to purchase the diorama sets we are aware that many customers wish to vary their models and thus may require different figures or they may require horse teams etc. for other types of diorama.

## GERMAN WW2 GUN TEAM

- HO German WW2 Ridden Wheel Horse
- HP German WW2 Unridden Wheel Horse
- HQ German WW2 Ridden Centre (rear) Horse
- HR German WW2 Unridden Centre (rear) Horse
- HS German WW2 Ridden Centre (front) Horse
- HT German WW2 Unridden Centre (front) Horse
- HU German WW2 Ridden Lead Horse
- HV German WW2 Unridden Lead Horse

## FRENCH NAPOLEONIC GUN TEAM

- HW French Napoleonic Near Wheel Horse
  - HX French Napoleonic Off Wheel Horse
  - HY French Napoleonic Near Lead Horse
  - HZ French Napoleonic Off Lead Horse
- All horses are complete with chain, reins, traces, etc. Various team combinations can be used dependent on the model being pulled.

## UNHARNESSED HORSES (UH)

- UH1 Unharnessed horse standing position
- UH2 Unharnessed horse moving position

## ARTILLERY RIDERS (R) 54m/m

These figures are designed to be used with the previously listed 54mm horse teams, drivers on foot to be used standing to the horse teams will be found listed in the Foot Figures (F).

- R1 British Napoleonic Driver, Royal Corps of Drivers - both hands on reins
- R2 British Napoleonic Driver, Royal Corps of Drivers - right hand with whip
- R3 British Napoleonic Driver, Royal Corps of Drivers - half turned in saddle to left
- R4 British Driver, WW1, both hands on reins
- R5 British Driver, WW1, right hand with whip
- R6 British Driver, WW1, half turned in saddle to left
- R7 British Napoleonic Royal Horse Artilleryman, limber or ammunition wagon driver
- R8 French Napoleonic Driver of Train seated on horse
- R9 German WW2 Driver wearing steel helmet
- R10 German WW2 Driver bare headed steel helmet on lap
- R11 German WW2 Driver wearing forage cap
- R12 German WW2 Driver bare headed steel helmet on back
- R13 French Napoleonic Driver fully turned
- R14 French Napoleonic Driver half turned

## BRITISH NAPOLEONIC HORSE TEAM

This harness was in use 1800-1902 with only slight modifications

- HG British Napoleonic Near Wheel Horse
- HH British Napoleonic Off Wheel Horse
- HI British Napoleonic Near Centre Horse
- HJ British Napoleonic Off Centre Horse
- HK British Napoleonic Near Lead Horse
- HL British Napoleonic Off Lead Horse

## FRENCH NAPOLEONIC HORSES

- HM French Napoleonic Ambulance Lead Horse
- HN French Napoleonic Ambulance Wheel Horse (Rear horse for shafts)

## BRITISH WW1 HORSE TEAM

This harness was in use from 1902 to date

- HA Near Wheel Horse
- HB Off Wheel Horse
- HC Near Centre Horse
- HD Off Centre Horse
- HE Near Lead Horse
- HF Off Lead Horse

All horses are complete with chain, reins, traces, etc. Various team combinations can be used dependent on the model being pulled.

## CAVALRY (C) 54m/m

- C1 British Napoleonic Mounted Officer, Royal Horse Artillery
- C2 British WW1 Mounted Artillery Officer, winter clothing
- C3 British North British Dragoons "Royal Scots Greys Trooper 1815"
- C4 Life Guards Trooper 1815. Dismounted with horse
- C5 British North British Dragoons Royal Scots Greys Trumpeter 1815
- C6 British North British Dragoon Royal Scots Greys Guidon Bearer 1815
- C7 Mounted Life Guards Trooper 1815
- C8 Chasseur a Cheval of the Gaurd Officer standing by horse
- C9 German mounted Officer WW2
- C10 French Napoleonic Trumpeter of the Line
- C11 Landsknecht standard bearer

All recommended retail prices are given on the separate list enclosed with this catalogue. Whilst we welcome customers to our factory - UNIT 3, CANAL BANK, LOUGHBOROUGH, LEICESTERSHIRE LE11 0HF. TEL. 01509 213789, FAX 01509 230874 - all model kits are made to order and the particular kit you require may not be available to be purchased at the factory unless we have prior warning of your visit.

**As the metal we use for the model kits contains lead the kits are not suitable for children under the age of 14 years.**

Assembly of the kits may be carried out using low melting point solders or epoxy resins. Superglue can be used for smaller non lead bearing parts if preferred. We recommend undercoating before final painting.

#### FOOT FIGURES (F) 54m/m

- |     |   |     |   |
|-----|---|-----|---|
| F1  | British Napoleonic Driver of train on foot  | F35 | American Civil War Union Artillery Officer                    |
| F2  | British WW1 Gunner/Driver, on foot, winter clothing                                 | F36 | American Civil War Union Artillery Sergeant                   |
| F3  | British Victorian Gunner at drill, holding rammer                                   | F37 | American Civil War Union Artilleryman, sighting gun           |
| F4  | British Victorian Gunner at drill, with hand lever                                  | F38 | American Civil War Union Artilleryman holding ramrod          |
| F5  | British Victorian Gunner at drill, holding fused shell                              | F39 | American Civil War Union Artilleryman holding trail handspike |
| F6  | British Victorian Gunner at drill, standing to gun with cartridge carrier           | F40 | American Civil War Union Artilleryman, with fuse satchel      |
| F7  | British Victorian Gunner Officer, at drill  | F41 | American Civil War Union Artilleryman, carrying bucket        |
| F10 | British Horse Artillery 1815, Gunner with handspike                                 | F42 | British Napoleonic Guards Private                             |
| F11 | British Horse Artillery 1815, Gunner with bucket                                    | F43 | British Napoleonic Guard Sergeant Major                       |
| F12 | British Horse Artillery 1815, Gunner sponging out                                   | F44 | Havildar standing with binoculars                             |
| F13 | British Horse Artillery 1815, Gunner carrying round                                 | F45 | Indian Gunner kneeling by gun                                 |
| F14 | British Horse Artillery 1815, Gunner stopping vent                                  | F47 | Indian Gunner crouching over handspike                        |
| F15 | British Horse Artillery 1815, Sergeant  | F48 | Indian Gunner kneeling with ramrod                            |
| F16 | British Horse Artillery 1815, Officer   | F49 | US Union Soldier cranking Gatling Gun                         |
| F17 | British Royal Scots Grey Trooper 1815, in stable dress, carrying hay or bucket      | F50 | US Union Soldier with Gatling Gun magazine                    |
| F18 | British Victorian Gunner at drill, holding sponge                                   | F66 | French Napoleonic Driver of Train standing                    |
| F19 | British Victorian Gunner Sergeant at drill  | F67 | French Napoleonic Forge Attendant                             |
| F20 | French Napoleonic Horse Artillery of the Guard, Gunner sponging out gun             | F68 | French Napoleonic Dragoon Trooper                             |
| F21 | French Napoleonic Horse Artillery of the Guard, Gunner carrying buckets             | F69 | French Napoleonic Fusilier in greatcoat & Shako Cover         |
| F22 | French Napoleonic Horse Artillery of the Guard, Gunner carrying round               | F70 | British Naval Officer   |
| F23 | French Napoleonic Horse Artillery of the Guard, Gunner standing to gun              | F71 | British Midshipman with Speaking Trumpet 1805                 |
| F24 | French Napoleonic Horse Artillery of the Guard, Gunner with linstock                | F72 | Seaman/Gunner - pulling lanyard 1805                          |
| F25 | French Napoleonic Horse Artillery of the Guard, Gunner kneeling to ammunition chest | F73 | Seaman/Gunner - with rope 1805                                |
| F26 | French Napoleonic Horse Artillery of the Guard, Officer                             | F74 | Seaman/Gunner - with rammer/sponge 1805                       |
| F27 | British WW1 Gunner carrying shells in canvas yoke                                   | F75 | Seaman/Gunner - with large hand lever 1805                    |
| F28 | American Civil War Confederate Artillery Officer                                    | F76 | Ships Boy with powder charge 1805                             |
| F29 | American Civil War Confederate Artillery Sergeant                                   | F77 | Landsknechts Drummer  |
| F30 | American Civil War Confederate Artilleryman pulling firing lanyard                  | F78 | Landsknechts sitting on rock holding pike                     |
| F31 | American Civil War Confederate Artilleryman with Fuse Satchel                       | F79 | Landsknechts Sulteress  |
| F32 | American Civil War Confederate Artilleryman carrying bucket                         | F80 | Landsknechts with beer stein                                  |
| F33 | American Civil War Confederate Artilleryman with rammer                             | F81 | Landsknechts with double-handed sword over shoulder           |
| F34 | American Civil War Confederate Artilleryman carrying round of ammunition            | F82 | Landsknechts Gunner pulling gun                               |
|     |   | F83 | Landsknechts Gunner pushing gun                               |
|     |   | F84 | German WW2 Gunner Officer, peaked cap                         |
|     |   | F85 | German WW2 Gunner crouching with shell                        |
|     |   | F86 | German WW2 Gunner standing arm raised looking at watch        |
|     |   | F87 | German WW2 Gunner leaning to pull lanyard                     |
|     |   | F88 | German WW2 Gunner kneeling to gun                             |

**HINCHLIFFE CLASSIC GUN KITS**

**1/35th SCALE  
METAL MODEL KITS**



**BRITISH 105mm LIGHT GUN**

ME/G/46 British modern 105mm light gun (also makes export version)



