

One great invasion... eight great soldiers.

**"OK**

let's go!  
With

three simple words, Gen. Dwight Eisenhower launched the greatest amphibious assault in history — the invasion of Western Europe.

# D-DAY '44

## FOUR-MAN SQUADS

**Squad One** features a 'Mohawk' airborne corporal cradling his Thompson and using his 'walkie-talkie'.

A crouching trooper with another 'tommy-gun' is covered by a standing buddy with an M1 carbine.

Backup is an M1 Garand carrying Private First Class.

**Squad Two's** four-man patrol is led by a Ranger Captain followed by a B.A.R.\* gunner and an ammo-carrying corporal. A Ranger sniper with his 1903 Springfield completes the group.

The Operation, code named "OVERLORD", would be better known as "D.DAY". On the morning of June 6, 1944, the Allied Expeditionary Force began landing on the Normandy beaches of Hitler's Fortress Europe. Earlier that same day British and American airborne troops dropped all over the Norman countryside behind German lines, creating panic, capturing vital roads and bridges and preparing to link up with their sea-borne comrades.

elite RANGERS and the 101<sup>st</sup>. AIRBORNE "The Screamin' Eagles".



## BATTLEFIELD INSPIRATION

Following the huge success of **KING & COUNTRY's** other WW2 series — Britain's airborne forces and Germany's Waffen SS, we wanted to honour two of America's finest fighting units ... The U.S. Army's

Inspired by the same actual events as Steven Spielberg's "SAVING PRIVATE RYAN" our figures show in minute detail what the American G.I. looked like during the Battle of Normandy.

## REINFORCEMENTS

More exciting figures are already being planned to add to this action-packed series. So, begin your journey to Normandy with **KING & COUNTRY's** D.Day 44.

Available from **KING & COUNTRY** and selected fine toy soldier shops and dealers around the world.

# KING & COUNTRY

FIRST WITH THE BEST!



\*B.A.R. Browning Automatic Rifle

KING & COUNTRY H.K. Shop 362, Pacific Place, Queensway, Hong Kong. Tel: (852) 2525 8603 Fax: (852) 2861 3806

KING & COUNTRY U.K. 20 Rockingham Way, Portchester, Fareham, Hampshire, PO16 8QS, England. Tel / Fax: (44) 01329 233141

VISIT OUR WEBSITE ON : [www.kingandcountry.com](http://www.kingandcountry.com)



# KING & COUNTRY D-DAY'44 BEHIND THE FRONT

## 2D INTO 3D

Then I called in the sculptor, Mr. Yau, a Beijing Arts graduate and our best. He would transform my 2D line drawings into 3D reality.



Along with the sketches I gave him a video of "The Longest Day" and "SAVING PVT. RYAN" (a photo essay book on the making of the movie).

Two weeks later his 'rough masters' were ready. Together we altered a piece of equipment here and a weapon there until we were satisfied with the result. Fourteen days passed and finally eight perfect military miniatures were ready for casting.

## WAR PAINT

When the blank castings returned from the factory another expert took over ... Vicky our finest 'Master Painter'. This talented Singaporean lady's artistic skills leave me speechless in admiration.

Like the sculptor, Vicky was given a full 'military briefing' and went away with a bundle of books and videos to read, watch and study.

Seven days later she returned with eight superb connoisseur-painted fighting Yanks.

## BACK AT THE STUDIO ...

I describe making a new series as like making a movie ... While our 'actors' were being prepared, myself and Ben, a British model maker, were building the 'sets' for our movie. We built two ... a section of a battle-damaged French village and a stretch of Normandy beach with a German pillbox. The sets would be used for display and promotional publicity.

## COMBAT PHOTOGRAPHY

As soon as our first production samples came back from China, we called in our own 'War Photographer', Randy Lagerway. Randy's work has been featured in all our brochures over the past four years. He makes sure we get the best pictures that tell the most interesting stories.

So, that's a very small glimpse of what goes into a new KING & COUNTRY series. I hope you'll like these exciting and dramatic D-Day '44 figures...



Happy Collecting,

*Randy Lagerway*

Randy C. Neilson

Co Founder & Managing Director



With the recent release of Steven Spielberg's outstanding epic "SAVING PVT. RYAN" a whole new generation is discovering World War Two.

As many KING & COUNTRY collectors know we've produced many WW2 figures - ARNHEM'44 British Paras and WAFFEN SS Germans ... but no Americans!

## COMMAND DECISION

Many fine American units fought on D.DAY ... which to choose? We decided on just two ... the 2nd RANGERS and the 101st AIRBORNE (the 'Screamin' Eagles') The same two in the Spielberg movie.

Armed with books, movies, documentaries, and even actual weapons and uniforms, I researched

what our GI's actually looked like in the summer of '44. I sketched dozens of drawings that would be whittled down to just eight black and white 'line portraits' of four Rangers and four Airborne troopers.







KING & COUNTRY'S

# The Black Watch

## Royal Highland Regiment

**T**HE BLACK WATCH is the oldest surviving Highland Regiment in the British Army and the most famous.

### THE HISTORY

Formed in 1725 the Regiment began as a series of independent companies whose duty was to 'watch' over the many clans living and fighting in the rugged Highlands of Scotland.

These companies became known as "The Black Watch" on account of the dark tartan they wore. By 1739 they were authorised by George II

to become a proper Regiment of Foot.

### BATTLES WON & LOST

"The Watch" has written their name in glory all over the globe. From Fort Ticonderoga in 1758 to Quatre Bras at Waterloo in 1815. They scaled the heights of Alma and helped win the Battle of Tel-El-Kebir. During the First World

War twenty five battalions were raised and won battle honours at Mons, Ypres, the Somme and on the Hindenburg Line. The second great conflict saw the Regiment fight at Dunkirk in 1940 and help defend Tobruk in 1941. Battalions also fought at El Alamein, invaded Sicily and Italy and battled through Burma. Since 1945 'The Watch' has seen action in Korea, Kenya, Cyprus and Northern Ireland.



### THE COLONEL-IN-CHIEF

Queen Elizabeth, the Queen Mother, has been Colonel-in-Chief since 1937 - one of her brothers was killed in action

with the Regiment at the Battle of Loos in 1915.

PLEASE NOTE: Edinburgh Castle Gate Parade is also available.



## TRADITIONS

Two of the Regiment's most famous pipe marches are "Hielan Laddie" and "The Black Bear". Regimental Motto is "NEMO ME IMPUNE LACESSIT" or, "Nobody touches me and gets away wi' it!" Their tartan is also known as the "Government" or "Military Tartan". All officers and other ranks wear a red hackle in their bonnets.

## ON PARADE

BWCP is our five piece Colour Party comprising: one officer with the Queen's Colour; one officer with the Regimental Standard; one Colour Sergeant plus two marching Privates.

BWEP is the Escort Party and comprises: one Colour Sergeant; one corporal; four Privates – all marching.

*The Officers Mess in this picture is our Copperfield Place Building Façade.*



# KING & COUNTRY'S The Black Watch

Royal Highland Regiment

## ABOUT OUR FIGURES

KING & COUNTRY are the 'first' to design and produce The Black Watch as they appear on parade today. Our twelve piece Pipes & Drums (BWPD) wear the White Tropical Dress tunics they appeared in during the handover ceremonies in Hong Kong in



CSM ON INSPECTION

## INDIVIDUAL SOLDIERS

BWO is a marching Black Watch Officer.

BWCSM is the marching Company Sergeant Major with pace stick.

BWPM is a marching Private with rifle.

BWGD is a standing at attention Private or Lance Corporal on Guard Duty.

## PIPES & DRUMS

BWPD The twelve piece Pipes & Drums as seen in this catalogue.

**Please Note:** Additional single Pipers can also be purchased.



A VISIT TO THE MESS

1997. Our officers and men are in Number Two Parade Dress of Kilts, khaki tunics with white belts and spats.

Photography:  
Randy Lagerway  
Design & Art Direction:  
Andy C. Neilson



"BY THE RIGHT, QUICK MARCH!"





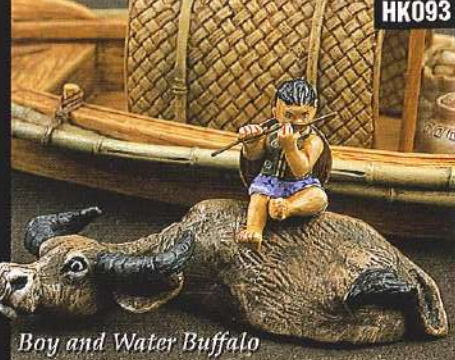
HK094

Old man with baskets, young girl carrying bananas



# KING & COUNTRY STREETS OF OLD HONG KONG NEW ADDITIONS

HK093



Boy and Water Buffalo

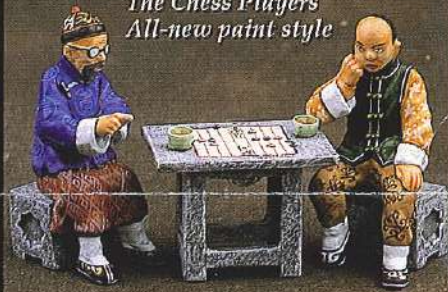
HK048

Chinese Sampan Set  
Polystone model – all new paint style



HK024

The Chess Players  
All-new paint style



# KING & COUNTRY STOP PRESS

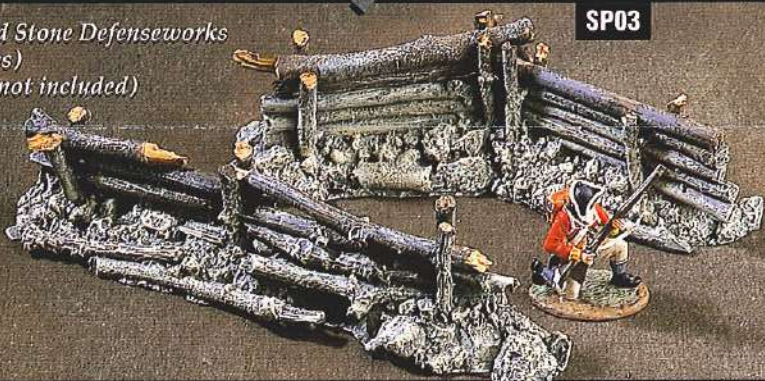
Metal Anti-Tank Obstacles (5 pieces)  
(figures not included)

SP02



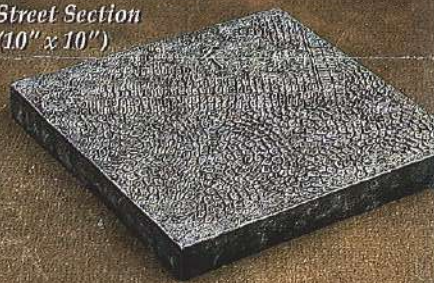
Log and Stone Defenseworks  
(2 pieces)  
(figure not included)

SP03



NV09

Plain cobbled stone  
Street Section  
(10" x 10")



D041



World of Dickens  
Jolly Jack Tar

AN016A



Daimler  
Armoured  
Car with  
Commander

AN016

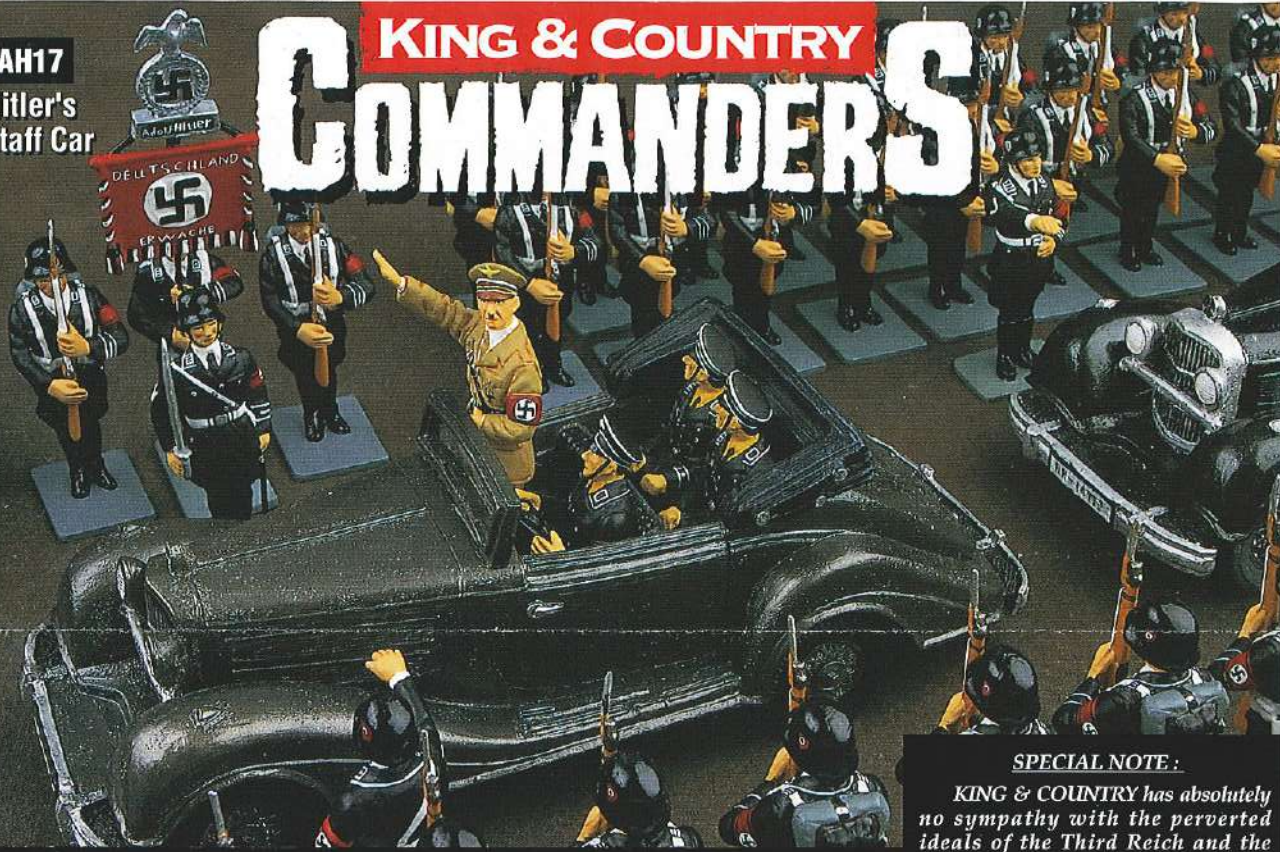


Same  
vehicle  
with  
crew



LAH17  
Hitler's  
Staff Car

# KING & COUNTRY COMMANDERS



**SPECIAL NOTE :**

*KING & COUNTRY has absolutely no sympathy with the perverted ideals of the Third Reich and the Nazis. Our interest is purely military. to paraphrase Winston Churchill : "Those who would ignore history are doomed to repeat its mistakes!"*

WS22  
Rommel's  
Staff Car



© 2006 • KING & COUNTRY

**KING & COUNTRY HEAD QUARTERS** 22fl., Asian House, 1 Hennessy Road, Hong Kong. Tel : (852) 2861 3450  
Fax : (852) 2861 3806 • **KING & COUNTRY SHOP** 362 Pacific Place, Queensway, Hong Kong. Tel : (852) 2525 8603  
Fax : (852) 2861 3806 • **KING & COUNTRY U.K.** 20 Rockingham Way, Portchester, Fareham, Hampshire,  
PO16 8QS, England. Tel / Fax : (44) 01329 233141 • VISIT OUR WEBSITE ON : [www.kingandcountry.com](http://www.kingandcountry.com)



Always looking for an excuse to attack the British... the French sent an expeditionary force to help the beleaguered Continental Army.

# ★ KING & COUNTRY ★ PATRIOTS FROGS & LEATHERNECKS

**AR22**  
Continental  
Marine  
Charging



**AR13**  
Continental  
Marine  
Backview/  
Equipment



**AR13**  
Continental  
Marine  
Standing  
ready



**AR24**  
Continental  
Marine  
Kneeling  
ready



**AR19 FRENCH FLAGBEARER**

First, raised in 1775, the Continental Marines were originally based on their British counterparts – the Royal Marines and served on both land and sea.

## FOR KING & COUNTRY

Fusilier Regiments were introduced into the British Army in 1702 by the Duke of Marlborough. The 23rd saw plenty of action during the revolution particularly at Lexington and Concord.

**AR17**  
French Regt.  
Kneeling  
ready



**AR14**  
French Regt.  
Officer



**AR15**  
French Regt.  
Drummer



**AR11**  
French Regt.  
Rifle at trail



**AR16**  
French Regt.  
Standing  
firing



**AR20**  
Continental  
Marine  
Officer



**AR23**  
Continental  
Marine  
Kneeling  
firing



**BR13**  
Fusilier  
Standing  
loading



**BR12**  
Fusilier  
Kneeling  
firing



**AR18**  
French Regt.  
Charging



**AR21**  
Continental  
Marine  
Standing  
firing





WS23

**PANTHER Ausf. G**  
One of Germany's best tanks  
along with the Tiger – model  
includes tank commander



# KING & COUNTRY ACHTUNG! NEW RELEASES

A great new tank... our  
famous "88" gun  
in winter camo  
plus THREE  
exciting sets  
of German  
Fallschirmjager  
(paratroopers)

FJ01



Schwimwagen  
on patrol

"THE ATTACKERS" FJ02

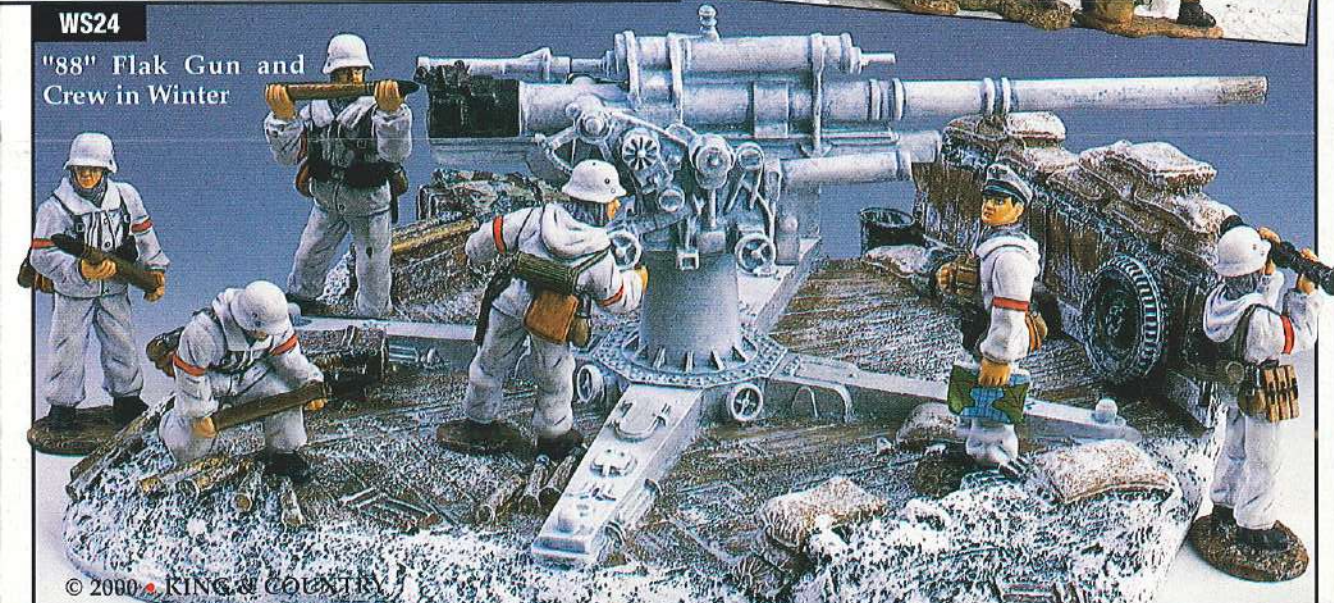


FJ03 "FIGHTING SUPPORT"



WS24

"88" Flak Gun and  
Crew in Winter



© 2000 KING & COUNTRY

**KING & COUNTRY HEAD QUARTERS** 22fl., Asian House, 1 Hennessy Road, Hong Kong. Tel : (852) 2861 3450  
Fax : (852) 2861 3806 • **KING & COUNTRY SHOP** 362, Pacific Place, Queenswy, Hong Kong.  
Tel : (852) 2525 8603 • **KING & COUNTRY U.K.** 20 Rockingham Way, Portchester, Fareham, Hampshire,  
PO16 8QS, England. Tel / Fax : (44) 01329 233141 • VISIT OUR WEBSITE ON : [www.kingandcountry.com](http://www.kingandcountry.com)



**KING & COUNTRY**

# F4U CORSAIR

**A superb desk-top replica of a great American fighter plane in 1:32 scale!**

JAPANESE pilots called it "The Whispering Death". Its own flyers called it "The Bent-Wing Bird". But whatever its nickname the Vought F4U Corsair was simply the best US Navy and Marine fighter aircraft of World War II.

Flown by such aces as "Pappy" Boyington and "Ike" Kepford the Corsair dominated and decimated its enemies in the skies over the Pacific.

**BATTLE-WORN  
NOT BATTLE WEARY**

Now you can own this flying legend for yourself. Recreated in exact 1:32 scale detail our big Corsair is hand-cast and hand-painted in polystone with metal detailing and boasts many unique features...

*Figure Shown smaller than actual size*

- An authentic and realistic battle-worn paint finish
- Landing gear lowered
- A tough, sturdy flight stand
- PLUS a connoisseur painted, all-metal miniature of a Marine Corps pilot

**WB02**  
WINGSPAN:  
383mm 15ins.  
LENGTH:  
318mm 12.5ins

## "PAPPY" BOYINGTON

Maj. Greg "Pappy" Boyington was probably the most famous Corsair ace. He commanded the USMC's VMF 214 – the "Black Sheep" squadron.

Before he himself was shot down and captured in 1944, he had accounted for 22 Japanese aircraft – the majority of which he had 'downed' while flying the F4U.

## AVAILABILITY

This outstanding F4U is available direct from King & Country and selected K&C dealers worldwide.





# Messerschmitt 109

The ultimate desk-top replica of the Luftwaffe's most famous fighter aircraft. **Hand-crafted and engineered in 1:32 scale!**

DESIGNED by Willy Messerschmitt and first flown in 1935, the 109 had its baptism of fire in the Spanish Civil War.

By July 1940 it was already a successful battle-scarred veteran of the campaigns in Poland, Norway, France and the Low Countries. Now it was ready to destroy Britain's Royal Air Force. Or so it seemed...

WB01	1:32 SCALE
WINGSPAN:	300mm 11.75ins.
LENGTH:	265mm 10.5ins.



**GENERAL ADOLF GALLAND**  
1912 - 1996

*Adolf Galland served with the Condor Legion in Spain during the Civil War. After the defeat of Poland*

*and the fall of France he was promoted to command JG26 in August 1940. In 1941, just 29 years of age, he was made Inspector*

## 1:32 SCALE PERFECTION

Here, for the first time, is a superb collector's model of the Me.109 in big 1:32 scale in the markings of one of Germany's most decorated pilots - Adolf Galland while he commanded JG26 during the Battle of Britain.

- A strong and sturdy flight stand.
- Landing gear lowered.
- A battle-worn paint finish.
- PLUS a delicately hand-painted all metal 1:32 scale figure of Adolf Galland.

*General of all of the Luftwaffe's fighters.*

*By 1943 he was the youngest General in Germany's High Command and was given the added responsibility for all Night Fighter operations in Western Europe.*

*Frequent disagreements with Goering led to his dismissal in early 1945. He resumed combat flying with the first operational jet Me.262 squadrons and finished the war with 104 'kills' - all in the West. He was decorated with the Knight's Cross with Oak Leaves, Swords and Diamonds.*

*He died peacefully, in Germany, in 1996.*

## AVAILABILITY

Adolf Galland's Me.109 "EMIL" is available direct from King & Country and selected K&C dealers worldwide.

## Specifications

**Powerplant:** Daimler Benz DB 601Aa 12-cylinder inverted-vee liquid-cooled engine rated at 1175hp for take-off, 1000hp at 12,140ft.

**Performance:** Maximum speed, 290mph at sea level, 307mph at 3280ft, 322mph at 6560ft, 348mph at 14,560ft, 336mph at 19,685ft; normal cruise, 300mph at 13,120ft, maximum range, 410 miles; service ceiling, 34,450ft.

**Weights:** Empty, 4189 lb; maximum

**Dimensions:** Span, 32ft 4 1/2in; height, 8ft 2 1/2in; wing area, 174sqft.

**Armament:** Two 20mm MG FF cannon each in wings and two 7.92mm Rheinmetall Bz. 77 machine guns with 1000rpg each in fuselage. (The engine-mounted MG FF/M cannon with 200rpg carried by some aircraft.)

Expertly hand-cast in polystone and fine pewter our authentically detailed 109 comes with these features.

**KING & COUNTRY**  
REACHING FOR THE SKY



**KING & COUNTRY HEAD QUARTERS**

22fl., Asian House, 1 Hennessy Road, Hong Kong.  
Tel : (852) 2861 3450 Fax : (852) 2861 3806  
E-mail : hongkong@kingandcountry.com

**KING & COUNTRY SHOP**

362, Pacific Place, Queensway, Hong Kong.  
Tel : (852) 2525 8603  
Website : www.kingandcountry.com

**KING & COUNTRY U.K.**

20 Rockingham Way, Portchester, Fareham, Hampshire,  
PO16 8QS, England. Tel / Fax : (44) 01329 233141  
Website : www.kingandcountry.co.uk



KING & COUNTRY'S

NA13



# VIVE L'EMPEREUR!

**FEARED...LOVED...LOATHED...REVILED  
YET HIS SOLDIERS WOULD FOLLOW HIM TO THE  
ENDS OF THE EARTH!**

Napoléon's line infantry combined the discipline and steadiness of the *Ancien Regime's* regular army with the revolutionary spirit of the new forces.

Each battalion was comprised of one company of Grenadiers, seven companies of Fusiliers (*riflemen*) and one other of Voltigeurs (*skirmishers*). Four battalions made up a regiment.

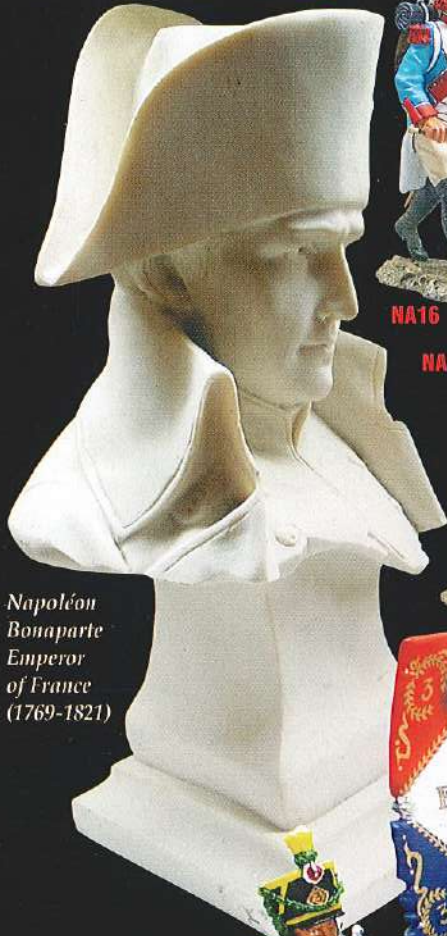
King & Country's latest Napoleonic release features the Grenadiers and Voltigeurs of one of the Emperor's most trusted and reliable regiments – the 3rd Line.

The Third fought and died for their Emperor across the burning sands of Egypt...in the wild and rugged mountain passes of Spain and at Armageddon...the ill-fated invasion of Russia.

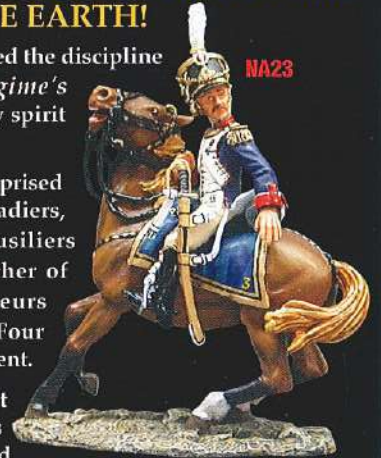
The remained loyal to him right up to the bitter end...on the bloody fields of Waterloo...

**KING & COUNTRY**  
NOW THAT'S REAL NAPOLEONICS!

Napoléon Bonaparte Emperor of France (1769-1821)



NA23



NA16

NA14



NA15



NA17

NA21

NA24

NA22

NA18

NA19

NA20

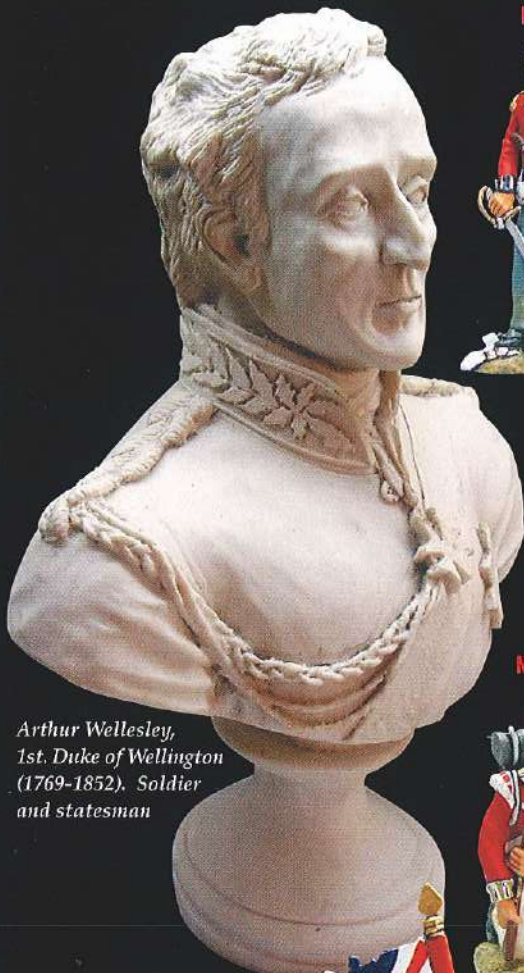


French Rifle model 1777



KING & COUNTRY'S

# "SCUM OF THE EARTH"



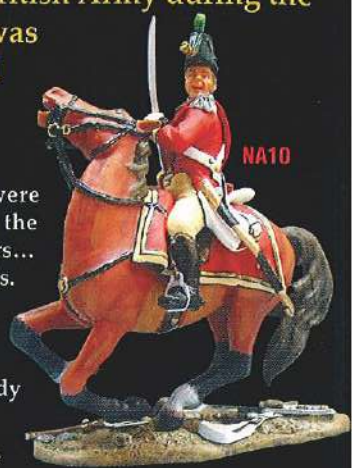
Arthur Wellesley,  
1st Duke of Wellington  
(1769-1852). Soldier  
and statesman



NA09

**W**ELLINGTON'S OFT QUOTED description of the British Army during the Napoleonic Wars was both damning and exaggeration in almost equal parts.

True, the army's ranks were filled with the scrapings of the magistrates' courts – debtors... vagabonds... petty criminals. But they were also filled with honest tradesmen... runaway apprentices... unemployed weavers and disaffected farm labourers. All of them ready to "take the King's shilling."



NA10

Out of these unlikely and disparate elements Wellington forged a professional army that fought and defeated Napoleon's finest – from Salamanca to Waterloo.



NA06

NA02

NA03

The Iron Duke's harsh comments perhaps hid a genuine pride in the victorious army he created. After all, he trained them, flogged them, bullied them, led them and... understood them.

King & Country's latest release – our first new Napoleonic in almost 10 years – honours them.

## KING & COUNTRY NOW THAT'S REAL NAPOLEONICS!



NA01

NA08

NA05

NA08

NA11

NA04

NA09

NA07

NA12

### KING & COUNTRY HEAD HEADQUARTERS

22fl., Asian House, 1 Hennessy Road,  
Hong Kong

Tel : (852) 2861 3450 Fax : (852) 2861 3806

E-mail : hongkong@kingandcountry.com

### KING & COUNTRY SHOP

362, Pacific Place, Queensway,  
Hong Kong

Tel : (852) 2525 8603

Website : www.kingandcountry.com

### KING & COUNTRY U.K.

20 Rockingham Way, Portchester, Fareham,  
Hampshire, PO16 8QS, England.

Tel / Fax : (44) 01329 233141

Website : www.kingandcountry.co.uk



★ KING & COUNTRY ★

# PATRIOTS REBELS & REDCOATS

WITH THE UPCOMING release of Mel Gibson's Revolutionary War epic "THE PATRIOT" interest among toy soldier collectors in the American War of Independence is bound to be great.

As usual KING & COUNTRY is 'first with the best' with the launch of an exciting and colourful new series "1776".

## 1776

Utilizing all our skills and talents we have produced a range of

connoisseur painted redcoats and colonials that accurately recreate in miniature the bloody battles that led to the birth of a new nation. Bunker Hill... Lexington... Saratoga... Yorktown.

So, follow the drum, unfurl the flag and begin your Revolution today.



© 2000 ★ KING & COUNTRY

Photography : Randy Lagerway Design & Art Direction : Andy C. Neilson

**KING & COUNTRY HEAD QUARTERS** 22FL, Asian House, 1 Hennessy Road, Hong Kong. Tel : (852) 2861 3450 Fax : (852) 2861 3806 • **KING &**

**COUNTRY SHOP** 362 Pacific Place, Queensway, Hong Kong. Tel : (852) 2525 8603 Fax : (852) 2861 3806 • **KING & COUNTRY U.K.** 20 Rockingham

Way, Portchester, Fareham, Hampshire, PO16 8QS, England. Tel / Fax : (44) 01329 233141 • VISIT OUR WEBSITE ON : [www.kingandcountry.com](http://www.kingandcountry.com)





# ★ KING & COUNTRY ★

# PATRIOTS

## REBELS & REDCOATS

**AR03**  
New York Regt.  
Running  
with  
rifle



**AR12**  
New York  
Regiment  
Flagbearer



**BR03**  
**BR04**  
**BR10**



**OFFICER FLAGBEARER DRUMMER**



**BR01**  
Fusilier Firing

**BR02**  
Fusilier  
Standing  
Ready

**BR09**  
Kneeling  
Ready



**BR08**



**Kneeling Firing**



**AR01**  
American  
Officer



**AR02**  
NY Regt.  
Charging

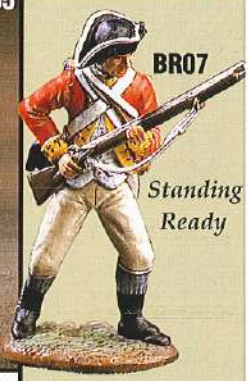


**AR09** Penn. Regt.  
Standing Ready

**AR06**  
Penn. Regt.  
Running



**Running w/ rifle**



**BR07**  
Standing  
Ready



**AR05**  
NY Regt.  
Kneeling Ready



**AR04**  
NY Regt.  
Standing  
Firing



**AR10**  
Penn. Regt.  
Kneeling Firing

**Rifle at Trail**



**AR07**

**Pennsylvania Regt.**



**BR06**  
Standing  
Firing

**BR11**  
Fusilier  
Drummer



**AR11**

**French Regt.**



**AR08**  
Pennsylvania Regt.  
Drummer

**THE AMERICANS**

1<sup>st</sup> New York Regt.  
3<sup>rd</sup> Pennsylvania Regt.

**THE BRITISH**

23<sup>rd</sup> Royal Welch Fusiliers  
10<sup>th</sup> Royal Lincolnshire Regt.



**KING & COUNTRY**

# “SEMPER PARATUS”

Marine Barracks Washington DC



Photography: Randy Lagerway  
Design & Art Direction: Andy C. Neilson

© 2000 • KING & COUNTRY

**KING & COUNTRY HEAD QUARTERS** 22fl., Asian House, 1 Hennessy Road, Hong Kong. Tel: (852) 2861 3450 Fax: (852) 2861 3806 • **KING &**

**COUNTRY SHOP** 362 Pacific Place, Queensway, Hong Kong. Tel: (852) 2525 8603 Fax: (852) 2861 3806 • **KING & COUNTRY U.K.** 20 Rodkingham Way,

Portchester, Fareham, Hampshire, PO16 8Q5, England. Tel / Fax: (44) 01329 233141 • **VISIT OUR WEBSITE ON:** [www.kingandcountry.com](http://www.kingandcountry.com)



## ON PARADE

# KING & COUNTRY

## THE ROYAL MARINE CONNECTION

There is a small “part of Washington that, for US Marines, is a very special place... it is known as "8<sup>th</sup> and I" by some... by others as the "Marine Barracks".

Now, KING & COUNTRY's latest "ON PARADE" Edition features the Marine garrison of "8<sup>th</sup> and I" on parade.

Our new figures show the Corps in all its glory – dress blues, scarlet tunics, dazzling white trousers and, of course, starched khakis.



MC01 OFFICER

# “SEMPER PARATI”

## Marine Barracks Washington DC



THE MARINE COLOUR GUARD

Apart from the Colour Guard all figures are available singly.

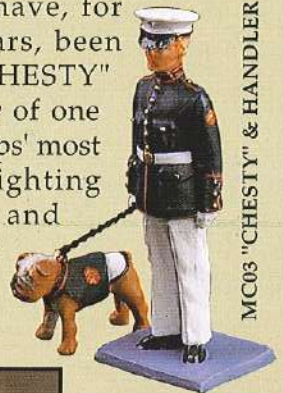
Sharing a common heritage and love of tradition our Royal Marine Drum and Bugle set makes a 'visiting' guest appearance on the parade.



RMB DRUMS & BUGLES

## CPL. "CHESTY"

Marine Corps Bulldog mascots have, for many years, been called "CHESTY" in honour of one of the Corps' most famous fighting Officers and hold the rank of corporal.



MC03 "CHESTY" & HANDLER

## MARINES IN MINIATURE

Recreated in fine detail and painted in a matt connoisseur finish these Marines are a worthy



MC06 PORT ARMS



MC07 MARCHING

addition to any collection.



IWJ6 "RAISING THE FLAG"

## IWO JIMA

IWO JIMA is an icon of the USMC and our flag raising set from our action series "Sands of Iwo Jima" makes a spectacular centre piece.



MC02 DRILL INSTRUCTOR



MC08 BUGLER

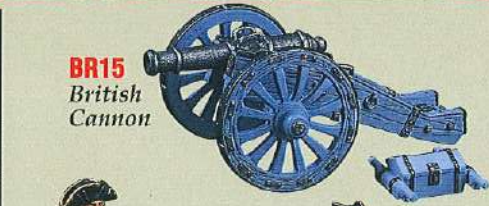


**A**S OLDER "1776" items are retired many newer and more detailed figures are being introduced to replace them.

★ **KING & COUNTRY** ★  
**PATRIOTS**  
**REBELS & REDCOATS**  
**CURRENTLY AVAILABLE**



**AR33** GEN. GEO. WASHINGTON



**BR15**  
 British Cannon



**BR14**  
 Royal Artillery Howitzer with Four Gunners



**BR17**  
 British Officer with Telescope



**BR16**  
 Royal Artillery Sergeant



**BR18**  
 10th Lincolnshire Sergeant



**BR21**  
 10th Lincolnshire Officer with Pike



**AR28**  
 New Jersey "Blue" marching



**AR27**  
 Continental Officer with Pike



**AR29**  
 Washington's Own Bodyguards



**BR20**  
 British Fusilier Fifer



**BR19**  
 10th Lincolnshire Fifer



**BR22**  
 Fusilier Marching



**AR30**  
 French Officer



**AR26**  
 Continental Cannon



**AR25**  
 Continental Howitzer and Four Artillerymen



**BR31**  
 French Sergeant



**AR32**  
 French Soldier marching

**EXISTING FIGURES**

- AR25** American Howitzer Set (incl. 4 figures)
- AR26** Continental Cannon
- AR27** Continental Officer w/ pike
- AR28** New Jersey "Blue" marching
- AR29** Washington's Bodyguard marching
- AR30** French Officer w/ telescope
- AR31** French Sergeant
- AR32** French Soldier marching
- AR33** George Washington on horseback
- BR14** British Howitzer Set (incl. 4 figures)
- BR15** British Cannon
- BR16** Royal Artillery Sergeant w/ rifle
- BR17** British Officer w/ telescope
- BR18** 10th Lincolnshire Sergeant
- BR19** 10th Lincolnshire Fifer
- BR20** Fusilier Fifer
- BR21** 10th Lincolnshire Officer w/ pike
- BR22** Marching Fusilier
- BR23** 10th Lincolnshire Marching

**LATEST ADDITIONS**

- BR24** Highlander Marching
  - BR25** Highlander Standing Firing
  - BR26** Highlander Standing Ready
  - BR27** Regimental Drummer
  - BR28** Regimental Bagpiper
  - BR29** Officer with Regimental Colour
  - BR30** Highlander Kneeling to repel
  - \***BR31** Royal Artillery Gun Crew
  - \***AR34** Continental Gun Crew
- \*Cannons AR26 and BR15 are sold separately



KING & COUNTRY'S

# Revolution

AN EPIC STRUGGLE • AN EPIC SERIES

BR24



BR26



BR28



BR29



BR25



BR26



BR28



BR30

BR31



BR27



SEVEN  
INDIVIDUAL  
BLACK WATCH  
HIGHLANDERS

TWO  
OPPOSING  
GUN CREWS



AR34

## KING & COUNTRY

QUALITY • RELIABILITY • ORIGINALITY

KING & COUNTRY HEAD QUARTERS

22fl., Asian House, 1 Hennessy Road,  
Hong Kong

Tel : (852) 2861 3450 Fax : (852) 2861 3806

E-mail : hongkong@kingandcountry.com

KING & COUNTRY SHOP

362, Pacific Place, Queensway,  
Hong Kong

Tel : (852) 2525 8603

Website : www.kingandcountry.com

KING & COUNTRY U.K.

20 Rockingham Way, Portchester, Fareham,  
Hampshire, PO16 8QS, England.

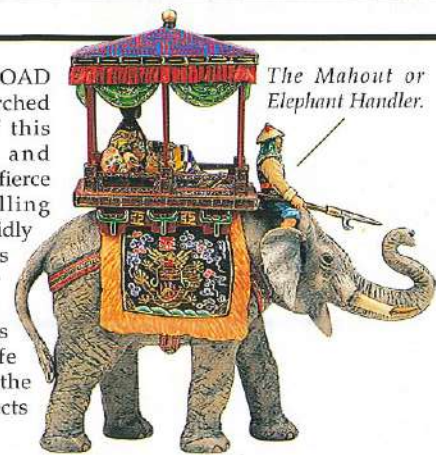
Tel / Fax : (44) 01329 233141

Website : www.kingandcountry.co.uk



# THE SILK ROAD 絲綢之路

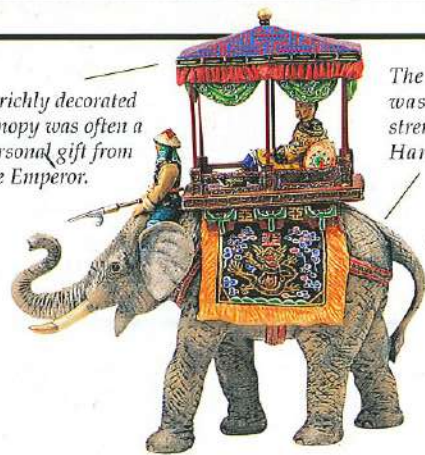
**SRI THE SILK ROAD ELEPHANT** Perched high on top of this mighty beast and shaded from the fierce sun the Travelling Magistrate languidly surveys his domain. A career beaurocrat, this mandarin holds the power of life and death over the Emperor's subjects in his area.



The Mahout or Elephant Handler.

A richly decorated canopy was often a personal gift from the Emperor.

The Asian Elephant was chosen for its strength and patience. Handler and beast would often work together for the entire period of the elephant's working life.



## PLOUGHING THE LAND

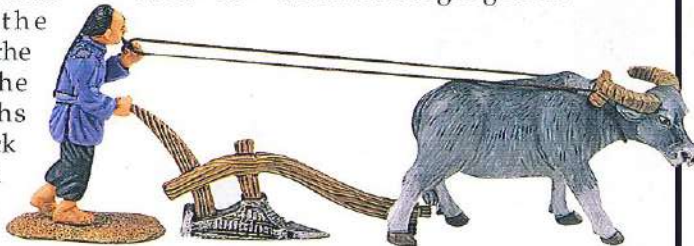
During the Han Dynasty, the government foundries began producing metal ploughshares. According to a Chinese proverb, farmers should always plough after rain to

conserve the moisture in the ground. The new ploughs made this back breaking task much easier.



## BEAST OF BURDEN

In the 2nd Century A.D. a new Chinese harness was invented that enabled farm animals, like this water buffalo, to pull heavier loads. A rigid collar fitted over an animal's neck and allowed it to pull a heavy load without strangling itself.



## THE FISHERMAN

China's lakes, streams and rivers provided plenty of opportunities for both professional and amateur anglers.

Cavalry banner of the famous 'Hunting Tiger' regiment.



Ordinary troopers wore royal blue... Standard bearers and sergeants red and officers black or dark blue.

## IMPERIAL CAVALRY

A Manchu Officer leads his men on a patrol.

Mounts were provided by the Emperor's own Royal stables.



For centuries trade flourished along this fabled caravan route that ran from China across Central Asia and into Europe.

Now, KING & COUNTRY introduce a brand new series that brings discerning collectors all the colour, history and excitement of this ancient trading highway - "THE SILK ROAD".



## THE SON OF HEAVEN

The Manchu Emperor Oianlong (1735 - 1796) and his Empress seated on their matching imperial thrones.

Oianlong enjoyed a long and prosperous reign. He greatly admired Chinese art and it flourished under his patronage.

## THE CHINESE FARM

In rural China as well as Hong Kong water buffalo were



the common 'beast of burden'. We have two sets available - The Bullock Cart complete with a walking peasant and The Ploughing Set. These will be the first of many in this complementary series.

**KING & COUNTRY HEAD QUARTERS**  
22Fl., Asian House, 1 Hennessy Road,  
Hong Kong  
Tel: (852) 2861 3450 Fax: (852) 2861 3806  
Website: www.kingandcountry.com

**KING & COUNTRY SHOP**  
362, Pacific Place, Queensway,  
Hong Kong.  
Tel: (852) 2525 8603

E-mail: hongkong@kingandcountry.com

## THE IMPERIAL COLLECTION

Yet another fabulously exotic series. A seated Emperor and Empress depict Imperial Life behind the walls of Beijing's Forbidden City. Look out for additions in the months to come.



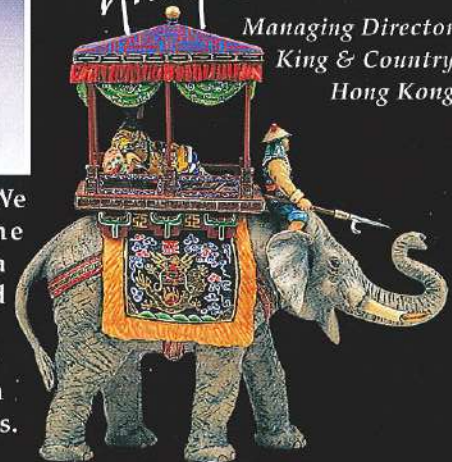
## ALL THIS AND WORLD WAR TWO...

For collectors of our popular Second World War series there's also exciting new additions as well as plenty of action. I'll let the pictures speak for themselves...

Happy Collecting,

*Andy Perks*

Managing Director  
King & Country  
Hong Kong



## KING & COUNTRY U.K.

20 Rockingham Way, Portchester, Fareham,  
Hampshire, PO16 8QS, England, U.K.  
Tel / Fax: (44) 01329 233141

E-mail: sales@kingandcountry.co.uk



Along the Silk Road international trade thrived because caravans and travelers could journey without danger.

Chinese merchants amassed immense fortunes by exporting

silk, spices, tea, porcelain and lacquer ware.

# THE SILK ROAD

絲綢之路

To protect the route and enforce the Emperor's law Special Magistrates were appointed. These mandarins had control over stretches of the

road - dispensing justice, hearing pleas and, of course, collecting taxes.

They were the Emperor's eyes, ears and hands. Often traveling by elephant they were accompanied by mounted body guards from the Emperor's own Household Cavalry.



These cavalymen ensured the law was enforced, the Imperial peace was undisturbed and tax revenue

continued to flow into the Imperial Coffers in the Forbidden City.

## MERCHANTS & PORTERS

A common sight on the road were the hordes of individual porters carrying their burden from town to town.

Traveling singly or in small groups these men were available for hire by merchants passing through the gateways.

Another frequent sight was the Merchant and his pack mule. What was too heavy for



a man would be borne by a mule. Our merchant has even brought his two pet dogs along!



## GATEWAYS TO PROSPERITY

Situated strategically along the length of the road were numerous fortified gates. These provided a haven for officials to extract "toll

fees" for the maintenance of the road and the support of the local garrison.





# 1968 TET OFFENSIVE

The country-wide uprising of the Viet Cong during the Tet holidays of 1968 was more bitterly fought than in the old imperial capital of Hue. The VC managed to capture the city and immediately began a reign of terror killing thousands of civilians associated with the South Vietnamese government. Before long the US Marines began counter attacking... fighting their way through the city street by street into the citadel in the most vicious urban battles since the Korean War.

King & Country add three more sets to their controversial and dynamic new "VIETNAM" series.

Set numbers VN6 and VN7 feature eight different US Marines in all-action poses. VN8 is an assault group of four Viet Cong—including a female sniper.

# ARNHEM

On Sunday 17 September 1944, three airborne divisions, two American and one British, descended on occupied Holland to seize a number of vital road and rail bridges. Codenamed "Market Garden",

this operation, if successful, might have ended the war in Europe by Christmas 1944. Unfortunately, it all came tragically undone in a small town called ARNHEM.

## 8 DIFFERENT SETS

With three new releases (and more on the way) King & Country provide collectors with a unique reminder of this epic battle.

- ARNHEM #1 "THE BATTLE FOR THE BRIDGE"
- ARNHEM #2 "FIGHTING WITHDRAWAL"
- ARNHEM #3 "WALKING WOUNDED"
- ARNHEM #4 "THE GUNNERS"
- ARNHEM #5 "CAPTURED"
- ARNHEM #6 "THE RECCE JEEP"
- ARNHEM #7 "AMBULANCE JEEP"
- ARNHEM #8 "THE MORTAR TEAM"

M4 SHERMAN TANK

BREN GUN CARRIERS

WSS 10 MG42 GUN GROUP

SINGLE PARA WITH TOMMY GUN

Each piece is skillfully painted in a high quality finish and ready to reassemble.

Set comes with a special certificate signed by Arnhem veterans from ARNHEM 44.

KING & COUNTRY H.K. Shop 362, Pacific Place, Queensway, Hong Kong. Tel: (852) 2525 8603 Fax: (852) 2861 3806  
 KING & COUNTRY U.K. 20 Rockingham Way, Porchester, Fareham, Hampshire, PO16 8QS, England. Tel / Fax: (44) 01329 233141  
 VISIT OUR WEBSITE ON: [www.kingandcountry.net](http://www.kingandcountry.net)

KING & COUNTRY H.K. Shop 362, Pacific Place, Queensway, Hong Kong. Tel: (852) 2525 8603 Fax: (852) 2861 3806  
 KING & COUNTRY U.K. 20 Rockingham Way, Porchester, Fareham, Hampshire, PO16 8QS, England. Tel / Fax: (44) 01329 233141  
 VISIT OUR WEBSITE ON: [www.kingandcountry.net](http://www.kingandcountry.net)



The first American to die in Vietnam was killed in an ambush in Saigon some time in September 1945. The last Americans to die in Vietnam were caught in a rocket attack on Tan Son Nhut airbase in April 1975. In between, almost 56,000 US servicemen and women lost their lives in what was to become America's longest and most controversial war.

#### IN COUNTRY

For a select few the war was fought in the latest, most sophisticated jet fighter/bomber over the FLAK and SAM filled skies of North Vietnam. For others it might be a missile destroyer cruising in the Gulf of Tonkin. For the majority though the war was fought on the ground... in the dense steaming jungles ... on the steep hillsides ... and in the flooded paddy fields of South Vietnam.

This was an infantryman's war of the hardest kind. Operations in the field were gruelling and strenuous... sapping the strength of even the strongest man. Everything had to be man-carried... food, water (plenty of it), ammunition (both for personal and squad use), mines, radios, grenades plus a lot, lot more. Individual soldiers might carry over 70 lbs of equipment in conditions ranging from oppressive humidity to bone-chilling monsoon rains.

#### VICTOR CHARLIE

And then there was the enemy... either local Viet Cong or imported North Vietnamese regulars—sometimes both. They were usually clever, extremely resourceful and always tenacious. Their weapons ranged from the most primitive booby trap to the most lethal weaponry the Soviet bloc could supply. American troops soon learned to award them a healthy respect.

And what about those US troops themselves—mostly draftees, young, inexperienced, 18 and 19 year olds fighting an unpopular war on the other side of the world. They learned their lessons the hard

way in a thousand

They formed a unique brotherhood and forged for themselves an unlikely nickname... GRUNTS.

#### REALISM IN MINIATURE

KING & COUNTRY, the foremost name in contemporary toy soldiers, has accurately and realistically created a whole new range of all-metal, hand-painted figures that tell it like it was.

SET NUMBER ONE depicts a six-man foot patrol of the 1st Infantry Division — 'the Big Red One' as they would have appeared in their years of deployment in Vietnam from 1965 until 1970.

SET NUMBER TWO shows a group of typical Vietnamese peasants — an old Papa San, a young girl coming from market... even a little boy perched on a water buffalo's back plus, ominously, a Viet Cong sniper! SET NUMBER THREE feature the Air Cavalry — three sitting and crouching troopers plus a helicopter door gunner with his trusty M60 and an Air Cav officer complete with black cavalry stetson.

ALSO AVAILABLE is a superb hand-carved, hand-painted, desk top 1:32 scale model of the ubiquitous workhorse of the skies over Vietnam — the UH-1 better known as... 'The HUEY' With its doors to the rear, the three troopers and door gunner can fit inside to make an outstanding display on a desk or in a den.

#### FUTURE RELEASES

In the works are a set of eight US MARINES in action as they would have appeared during the TET Offensive of January 1968. Release date for the Marines is early 1997. Other additional sets are planned.

#### ABOUT THE FIGURES

Each 1:32 scale piece is expertly cast in white metal and skilfully painted in a high quality matt finish by our own team of talented artists. Each set comes with a special limited edition certificate. As these pieces are strictly limited we advise collectors to begin their VIETNAM COLLECTION today!



# Vietnam



ON THE BATTLEFIELDS OF VIETNAM... FROM THE DELTA TO THE DMZ.



cont'd. from front page

Among our latest releases are... **WS14** The STURMGESCHUTZ III one of Germany's best self-propelled guns. Our polystone cast model comes complete with a vehicle commander figure.

**WS11** features a three-man ambush set with a Panzerschreck (the German bazooka).

**WS12** depicts a four-man patrol infiltrating their way forward. Providing much-needed transport is **WS13** the famous Hanomag Halftrack with the additional firepower of an MG42 gunner at the helm.

### BEWARE OF WILD BEASTS!

Hidden among the ruins of a bombed-out church is another nasty surprise... a fearsome Tiger 1 tank. Equipped with the mighty 88mm gun, this heavily armoured monster was the most powerful tank of WWII.

Our Tiger is in the markings of Hauptsturmfuhrer Michael Wittman, the most famous tank ace of the War. In one particular Normandy battle, Wittman destroyed 22 British tanks and armoured vehicles! This polystone model also

has a miniature of Wittman himself included.

### A VILLAGE IN NORMANDY

Making a dramatic diorama is simple when you use our new eight-piece Normandy village. Constructed in sturdy, lightweight expanded polystyrene, these highly accurate battle-damaged French buildings make the perfect battlefield setting.

*Happy Collecting*

*Andy C. Neilson*

Andy C. Neilson

Co Founder & Managing Director

**B**y the summer of 1944 the German forces which defended Normandy were a typical mixture. Some were under-age, many over-age but all of them under equipped.

There were exceptions of course and a few select unit were

very good indeed. None better than the divisions of the Waffen SS.

## KING & COUNTRY

# D-DAY'44 GERMANS

Specially equipped with the best German weaponry, superbly trained, ably led and highly motivated these SS divisions were soon in the forefront of the battle.

### D.DAY'44 PLUS ONE

On June 7, 1944, one day after the landings, the 1st SS

"Leibstandarte" Division moved up to the line. Five other SS formations soon followed including the elite 2nd SS "Das Reich" Panzer Division and the newly formed 12th SS "Hitlerjugend".

They were soon to make their presence felt to the Allied armies.

### FIGHTING DEFENCE

Currently King & Country produces a whole range of fighting vehicles and figures ideal for refighting the battle of Normandy.

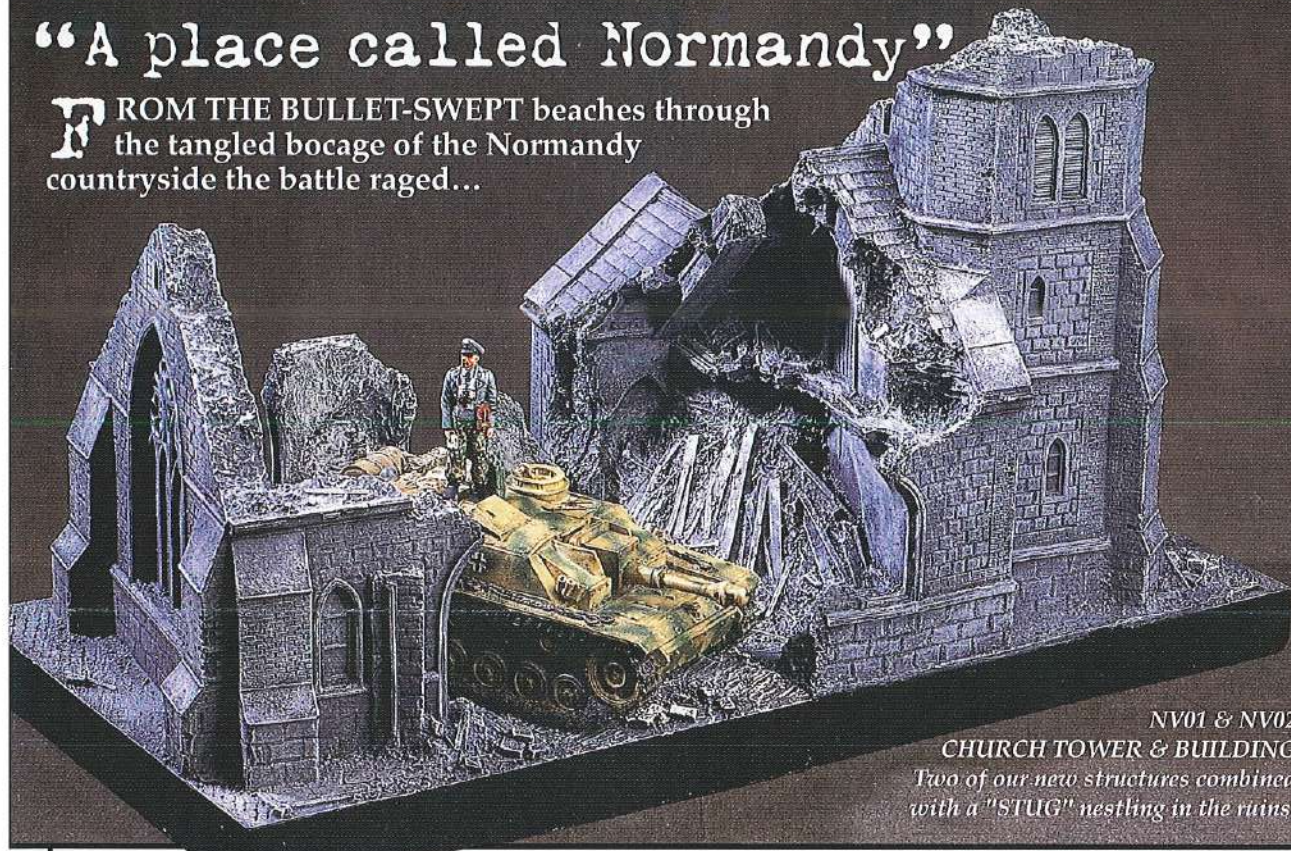
cont'd on back page





# "A place called Normandy"

FROM THE BULLET-SWEPT beaches through the tangled bocage of the Normandy countryside the battle raged...



NV01 & NV02  
CHURCH TOWER & BUILDING  
Two of our new structures combined with a "STUG" nestling in the ruins.

VILLAGE BY VILLAGE, field by field, the Battle for Normandy was as bitter and hard as any in World War Two.

The eventual Allied success cannot take away from the undoubted courage and determination of the German defenders. Outnumbered, under constant air attack and with little hope of reinforcements, the German forces extracted a heavy price for every yard of Normandy soil captured.

## RECAPTURED

Now you can recapture Normandy... in miniature with

King & Country's dramatic range of fighting figures, vehicles and diorama settings.



**WS14 STURMGESCHUTZ III**  
One of Germany's best weapons—the "STUG" Self-Propelled Gun had great mobility and an extremely low profile. Our sturdy hand-cast, hand-painted polystone model

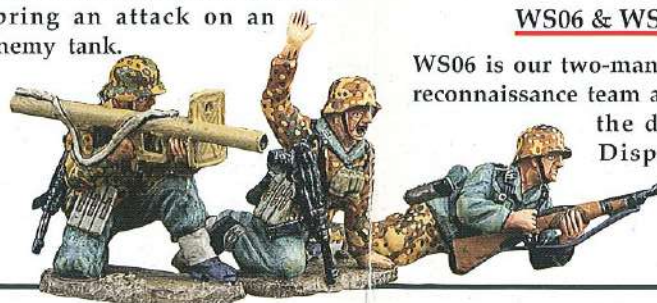
carries a 105mm assault gun and includes a vehicle commander.

## WS12 INFILTRATION

Four well-armed Panzer Grenadiers cautiously edge towards the frontline... the sound of battle in their ears.

## WS11 AMBUSH!

A three-man Waffen SS Panzerschreck team are about to spring an attack on an enemy tank.



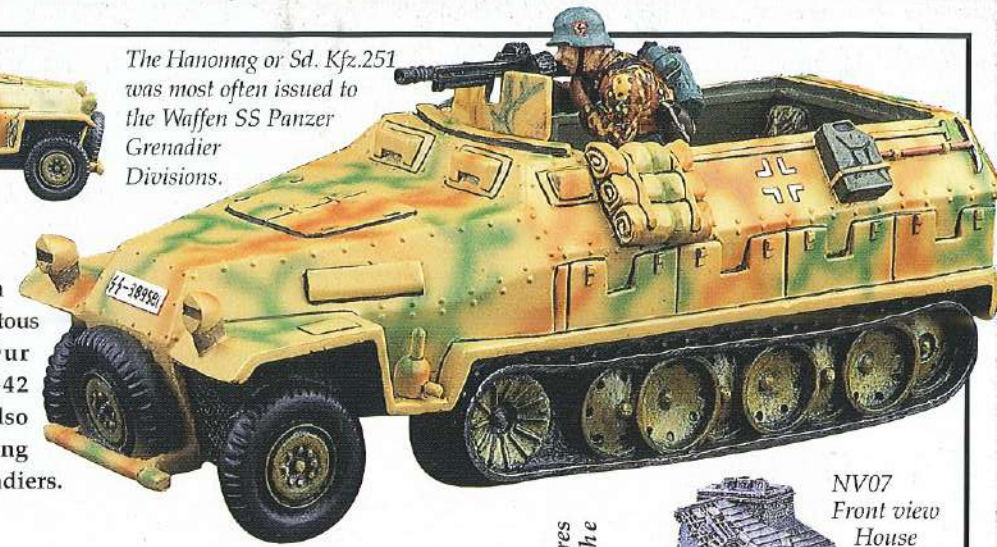
PHOTOGRAPHY: RANDY LAGERWAY ART DIRECTION: ANDY C. NEILSON NORMANDY VILLAGE: JOHN JENKINS



The Hanomag or Sd. Kfz. 251 was most often issued to the Waffen SS Panzer Grenadier Divisions.

## WS13 HANOMAG

Another of our tough polystone vehicles—the ubiquitous Hanomag Halftrack. Our version includes an MG42 gunner. This vehicle can also take some of our WS09 sitting and crouching Panzer Grenadiers.



## WS10 FIRE!

Shown on the front cover an MG42 Gun Group prepares to open fire from behind a section of broken wall.

## WS08 ADVANCE

A junior officer leads three of his men forward to battle.

## WS05 MP'S

Two SS Military Police direct traffic ever watchful for enemy aircraft.



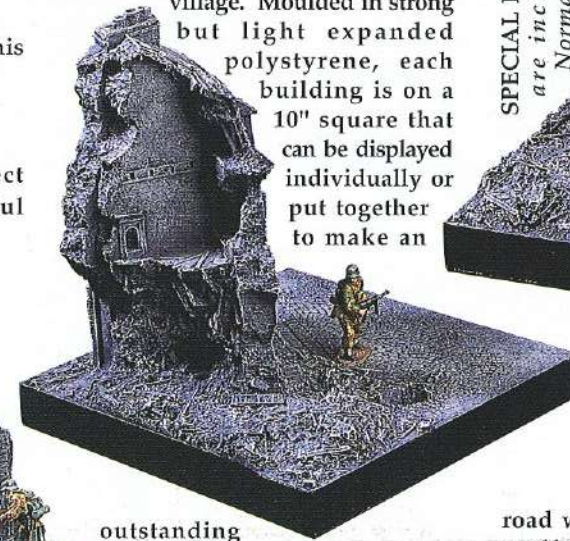
NV06  
Shop House with back yard.

## WS06 & WS07

WS06 is our two-man motorcycle reconnaissance team and WS07 is the disembodied Dispatch Rider with his BMW.

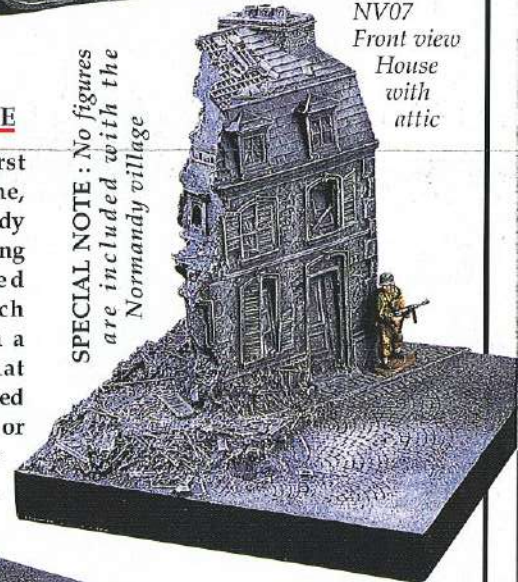
## THE NORMANDY VILLAGE

King & Country is always 'first with the best'. For the first time, an eight-piece battle-torn Normandy village. Moulded in strong but light expanded polystyrene, each building is on a 10" square that can be displayed individually or put together to make an



NV07  
Rear view  
House with attic

SPECIAL NOTE: No figures are included with the Normandy village



NV07  
Front view  
House with attic

outstanding and dramatic diorama that can be constantly changed to provide different battle scenes.

road with an abandoned German staff Car complete with dead driver!

## 8 SECTIONS

Among the selections are a two-piece church... a typical French Garage... three different shops and houses... a section of street and wall and a

NOTE: Advertising signs are provided for collectors to attach as required.



NV03 FRENCH GARAGE  
This garage is under new management



In the annals of the United States Marines, one battle will be forever associated with the Corps... IWO JIMA.

On this tiny, barren, foul-smelling spit of volcanic sand and rock one of the bloodiest struggles of World War Two was fought.

In just 36 days of continuous combat over 6,000 Marines were killed and more than 18,000 wounded. Japanese losses totalled over 22,000 killed and a little over 1,000 captured!

Now, KING & COUNTRY are honouring the heroic memory of IWO JIMA and the men who paid the supreme sacrifice with the

KING & COUNTRY'S

# THE SANDS OF IWO JIMA

USMC



1945

release of this dramatic new series of all-metal, hand-painted military miniatures in 1:32 scale.



## "Uncommon valor was a common virtue"

### BLOOD, GUTS & GLORY

Eleven unique sets of fighting figures, vehicles and an original diorama have been meticulously crafted by our own skilled team of sculptors and painters. Each miniature piece has been created with an expert eye for detail and accuracy.

### IN COMMEMORATION

Finally, as a special

momento of the series KING & COUNTRY has minted a lasting symbol of the battle... the IWO JIMA COMMEMORATIVE MEDAL. This antique bronze medal and ribbon (*the Flag Raising set has an antique silver finish and different ribbon*) is presented, free-of-charge with every individual set ordered.

Begin your journey back to the sands of Iwo Jima with this



outstanding tribute in miniature from the world's foremost designer of military miniatures.

Available direct from KING & COUNTRY and selected fine toy soldier shops and dealers around the world.



*Andy C. Neilson*

Andy C. Neilson

Co Founder & Managing Director

**KING & COUNTRY**  
FIRST WITH THE BEST!

© 1999 KING & COUNTRY

**KING & COUNTRY HEAD QUARTERS** 22fl., Asian House, 1 Hennessy Road, Hong Kong.  
Tel : (852) 2861 3450 Fax : (852) 2861 3806 • **KING & COUNTRY SHOP** 362, Pacific Place, Queensway, Hong Kong. Tel: (852) 2525 8603 • **KING & COUNTRY U.K.** 20 Rockingham Way, Portchester, Fareham, Hampshire, PO16 8QS, England. Tel / Fax : (44) 01329 233141  
VISIT OUR WEBSITE ON : [www.kingandcountry.net](http://www.kingandcountry.net)



# The Iwo Jima Flag-Raising

JOE ROSENTHAL • ASSOCIATED PRESS



THE PHOTOGRAPH of the IWO JIMA flagraising is one of the most famous images of World War Two. It was taken by Associated Press photographer Joe Rosenthal on the morning of 23 February 1945.

Standing just below the crest of Mt. Suribachi, Rosenthal watched as five Marines and a Navy Corpsman began to raise the stars and stripes.

"I swung my camera around until I guessed the peak of the action... and shot!" Rosenthal later recalled.

Of the six men who raised the flag that February morning, three were to be killed in action before the island was secured.

## THE ASSAULT

The Marines who captured Iwo Jima belonged to the 3rd, 4th and 5th Marine Divisions which formed the V Amphibious Corps (VAC).

**SET 1 "Hit the Beach"** A Marine officer, .45 pistol in hand, leads three of his men... one carrying a .30 calibre machine gun up the beach.

**SET 2 "Fire Support"** A standing Marine BAR gunner takes aim while three others... including a Marine flame thrower advance on the enemy.



**SET 7 "Amphibious Assault"** Our LVT-2 Amtrack comes complete with two .30 calibre machine guns and a .50 calibre manned by a Marine gunner.



## The LVT-2 AMTRACK

Popularly known as the 'Water Buffalo' the LVT-2 was the primary amphibious tractor of the USMC in World War Two.

Entering production in June, 1942, this model first saw action at Tarawa in November 1943.

• *Special Note* : This set is the only one of the series to contain the antique silver commemorative medal and special ribbon.



## UNCOMMON VALOR

Twenty-seven Marines and Navy Corpsmen won the Congressional Medal of Honor on Iwo Jima, thirteen posthumously. This particular battle accounted for more than one-quarter of the 80

**SET 6 "Raising the Flag"** Probably the most famous image of the USMC... the Iwo Jima flag-raising... five Marines and a Navy Corpsman symbolise the valor and sacrifice of the American fighting man as they raise the stars and stripes.

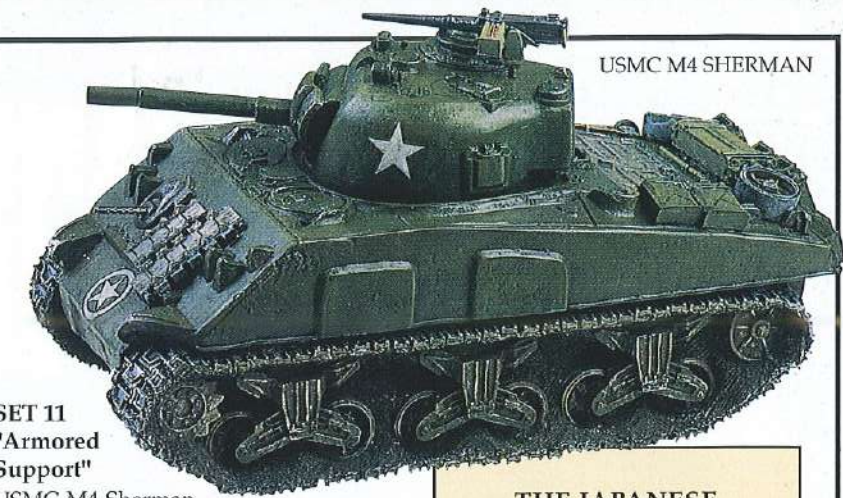
Medals of Honor awarded to the Corps during the Pacific War.



**SET 3 "Calling up Reinforcements"** A wounded Marine officer reaches for his radio operator's handset while his platoon runner awaits orders.

## BACKUP

Supporting the Marines were 8 battleships, 12 escort carriers, 19 cruisers and 44 destroyers.



USMC M4 SHERMAN

## SET 11 "Armored Support"

USMC M4 Sherman with its 75mm gun adds a powerful punch to the advancing Marines.

**SET 4 "Take Cover!"** A lying prone Marine reaches for a fresh magazine for his BAR, next to him



another buddy gives covering fire.

**SET 5 "Ready... aim... fire!"** A kneeling Marine NCO directs a bazooka man's aim while another Marine provides additional fire support.



## THE IWO JIMA BATTLEFIELD

Constructed from expanded polystyrene this detailed diorama measures 20" x 20". A detachable mountain top reveals a network of Japanese tunnels and bunkers which echo the real Mount Suribachi and its defence positions.



## THE JAPANESE

### SET 8 "Tough Opposition"

A crouching Japanese officer pistol in one hand, sword in the other,



leads two of his men in a determined defence.



**SET 9 "Mortar and Machine Gun"** Three Japanese infantrymen prepare to make every bullet and bomb count in their last ditch battle.



PHOTOGRAPHY: RANDY LAGERWAY ART DIRECTION: ANDY C. NEILSON BATTLEFIELD: JOHN JENKINS



# One great invasion... 19 great soldiers!

cont'd. from front page

same polystone cast model that appears in our "Sands of Iwo Jima" series but looks just as powerful on the beaches and in the bocage of Normandy as the volcanic sands of a Japanese held island.

## NORMANDY VILLAGE

To bring the battlefield alive, and your display, KING & COUNTRY have created a unique and dramatic series of battle damaged buildings, we call our "Normandy Village".

Skillfully detailed, these 8 sturdy but lightweight pieces (on 10" squares) are made from expanded polystyrene and can be utilized individually or together to make a

constantly adaptable diorama for our fighting figures and vehicles.

Each piece comes painted as in the photograph with a sheet of advertising signs and posters which can be attached as required by the collector.

## REINFORCEMENTS

More exciting figures, vehicles and buildings are already planned for the future of this action-packed series.

So, return to the battlefields of Normandy with

KING & COUNTRY's D.Day'44. Available from KING & COUNTRY direct or selected fine toy soldier shops and dealers around the world.

*Happy Collecting*

Andy C. Neilson  
Co Founder &  
Managing Director

# "OK let's go!"

With these simple words, Gen. Dwight D. Eisenhower launched the greatest amphibious assault in history-the invasion of Western Europe.

The Operation code named "OVERLORD" would be better known as "D.DAY".

On the morning of June 6, 1944 the Allied Expeditionary Force began landing on the Normandy beaches of Hitler's Fortress Europe.

# KING & COUNTRY D-DAY'44 YANKS

Earlier that same morning, British and American airborne troops dropped all over the Norman countryside behind enemy lines creating havoc, capturing vital roads and bridges and preparing the way for their sea-borne comrades.

## BATTLEFIELD INSPIRATION

Following the huge success of KING & COUNTRY's first releases of World War Two GI's in September 1998, we've been inspired to do more...

Four additional sets of Paratroopers, Rangers and Infantrymen have been devised to provide even more 'muscle' for the hard-pressed 101 st. Airborne and 2nd Rangers of sets one and two.

## ARMORED SUPPORT

Heavier support comes in the form of an M4 Sherman tank-this is the

cont'd on back page

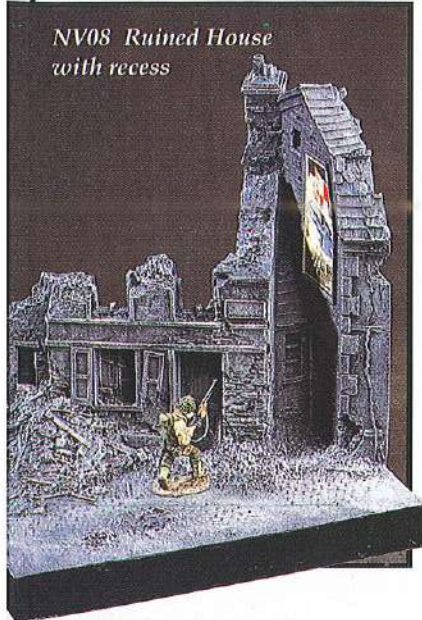


© 1999 KING & COUNTRY



# "A place called Normandy"

NV08 Ruined House with recess



EXPECTING LIGHT opposition the 1st Infantry Division (the Big Red One) and the 29th Infantry Division landed on Omaha Beach. By dusk of June 6th, 1944 they had secured an area 6 miles deep and 18 miles long.

For some the battle ended on Omaha's bloody beach... for many others it had only just begun.

## D.DAY'44

KING & COUNTRY pay tribute to the American Forces which took part in the battle for Normandy with six exciting sets of Paratroopers, Rangers and Infantrymen.

Plus a whole range of dramatic diorama buildings which enable collectors to refight the battle over and over again.



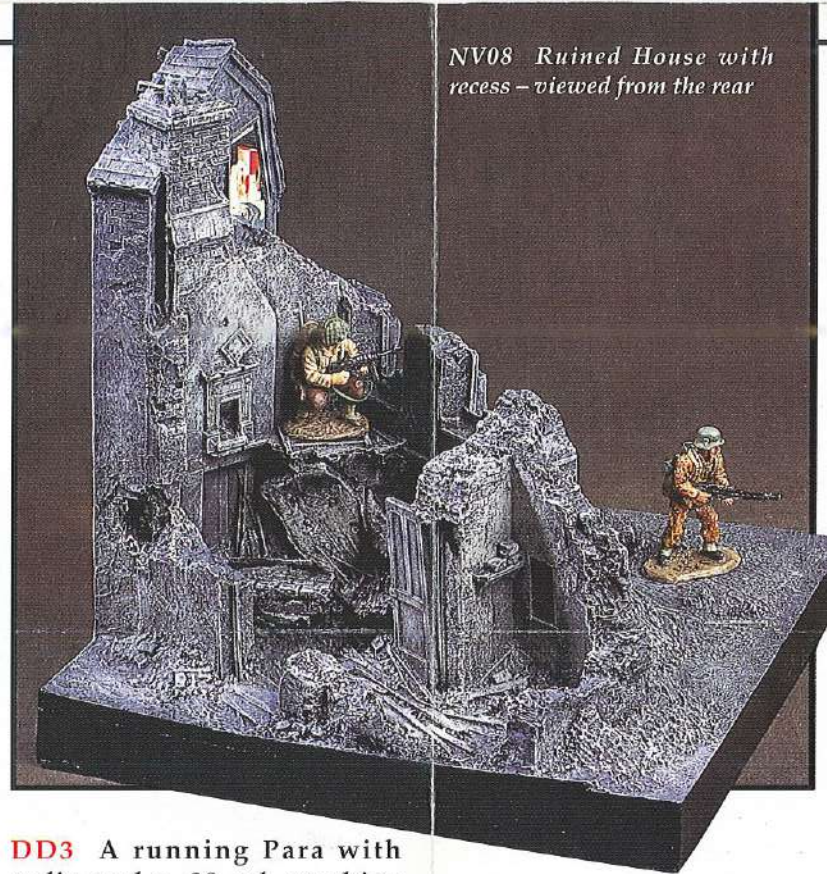
set the scene... DD1 shows a Corporal using his "walkie talkie" while his three squad mates prepare for action.

## AIRBORNE ASSAULT

We've produced three great sets of 101st Airborne Paras to

## FROM THE BEACHES

DD2 has a Ranger Captain leading a small section of three men into action.



NV08 Ruined House with recess - viewed from the rear

DD3 A running Para with radio and a .30 cal. machine gunner.

DD5 Three 101 Paras man a 57mm anti-tank gun.

DD4 A running Ranger Medic is given covering fire from a lying prone Sergeant.



DD6 Four attacking 29th Infantrymen including a standing GI firing a bazooka.

## HEAVY METAL

Although no match for the deadly German Tiger tank the M4 Sherman was tough, reliable and available in overwhelming numbers to provide mobile fire support for the ground forces.



M4 SHERMAN

Our hard-wearing polystone model is perfect for battlefield scenes.



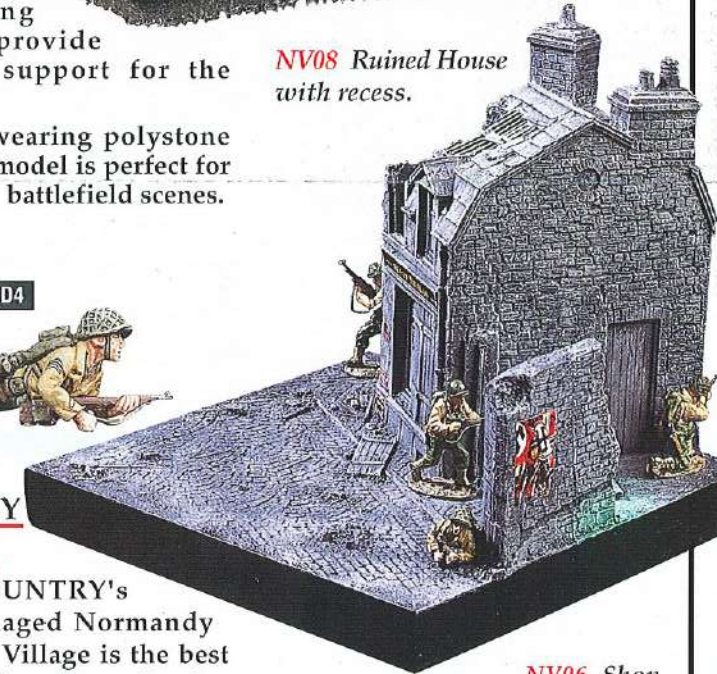
NV08 Ruined House with recess.

## NORMANDY VILLAGE

KING & COUNTRY's battle-damaged Normandy Village is the best way to display these dynamic figures and vehicles. Here's what is available...

NV01 The Church Tower  
NV02 The Church Building  
NV03 French Garage  
NV04 Street with wall section  
NV05 Street with staff car  
NV06 Shop House with back yard  
NV07 Ruined House with attic

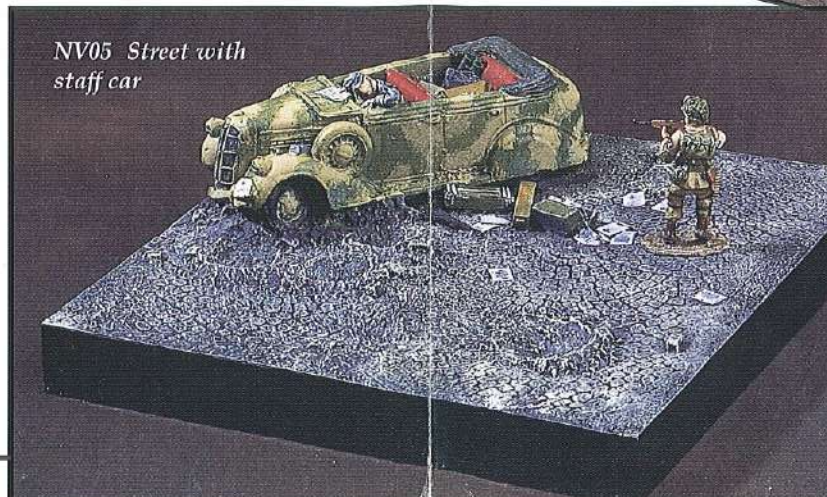
PHOTOGRAPHY : RANDY LAGERWAY  
ART DIRECTION : ANDY C. NELSON  
NORMANDY VILLAGE : JOHN JENKINS  
PRODUCTION : FORMTECH INC.



NV06 Shop House with back yard



NV04 Street with wall section



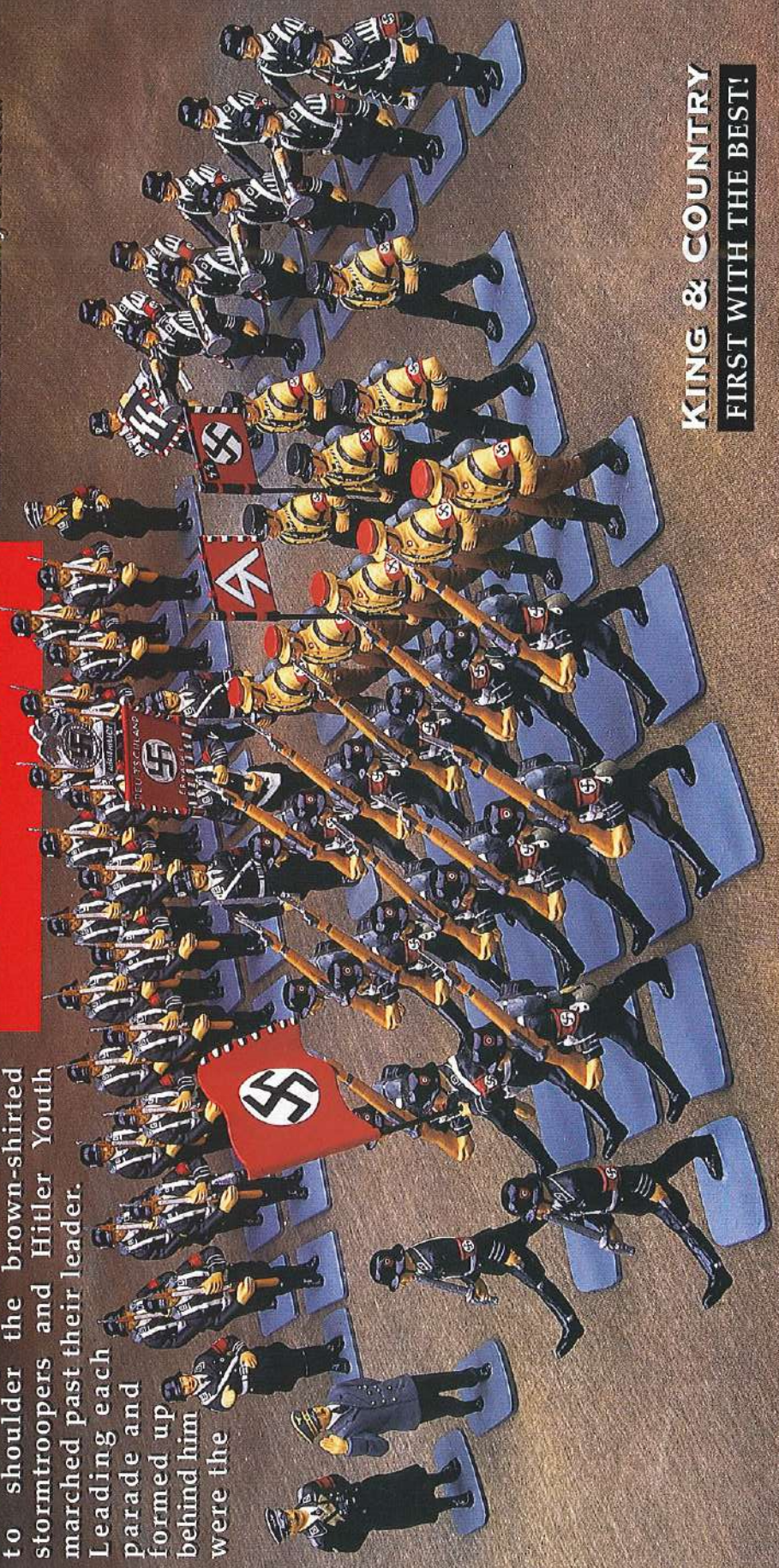
NV05 Street with staff car



NV03 FRENCH GARAGE



**KING & COUNTRY**  
FIRST WITH THE BEST!



**KING&COUNTRY**  
**BERLIN**  
**1938**

**P**ARADES PLAYED a major part of everyday life in pre-war Nazi Germany.

The biggest and most important were held every year in Nuremberg and Berlin. Here the 'party faithful' would gather in their thousands to pay 'homage' to their Fuhrer in colourful yet sinister spectacles.

Rank upon rank, shoulder to shoulder the brown-shirted stormtroopers and Hitler Youth marched past their leader. Leading each parade and formed up behind him were the

ever-present, ever watchful black-clad Schutz Staffel – Hitler's own personal bodyguard led by Reichsfuhrer Heinrich Himmler.

Within a few short years many who took part in these parades would meet their fates in the snow covered wastes of Russia... the burning sands of North Africa... and the bomb blasted ruins of the thousand year Reich.

**HOT WHEELS of the THIRD REICH**

**LAH17**  
Hitler's Staff Car

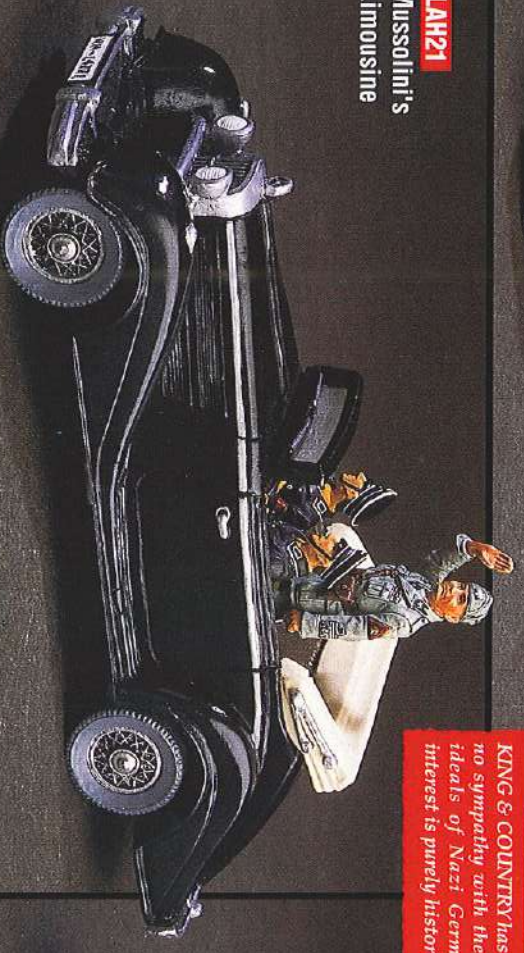


**LAH19**  
Goering's Staff Car



**SPECIAL NOTE:**  
*KING & COUNTRY has absolutely no sympathy with the perverted ideals of Nazi Germany. Our interest is purely historical.*

**LAH21**  
Mussolini's Limousine



**LAH20**  
Himmler's Staff Car



**KING & COUNTRY**

**KING & COUNTRY HEAD QUARTERS** 22fl, Asian House, 1 Hennessy Road, Hong Kong. Tel: (852) 2861 3450 Fax: (852) 2861 3806 •  
**KING & COUNTRY SHOP** 362, Pacific Place, Queenswy, Hong Kong. Tel: (852) 2525 8603 Website: www.kingandcountry.com • **KING & COUNTRY**  
U.K. 20 Rockingham Way, Portchester, Fareham, Hampshire, PO16 8QS, England. Tel / Fax: (44) 01329 233141 E-mail: sales@kingandcountry.co.uk



**LAH18**  
Reich Chancellery  
Gateway



**LAH18A**  
SS Guard  
at ease

**T**HE SS, an offshoot of the SA had its humble origins as Hitler's personal bodyguard. After the Nazis rose to power in 1933 it rapidly began to grow – both in size and prestige.

The original bodyguard section grew first to battalion and then regimental strength and was granted the



**LAH22**  
Leibstandarte SS  
Guard Box Set

title "LEIBSTANDARTE-SS Adolf Hitler".

Many other SS units were formed but the LAH, as it was known, retained the premier position in the SS hierarchy for the remaining 12 years of the Third Reich.

**"MEIN EHRE HEIST TREUE"**

This was the SS motto, literally translated it means "Loyalty is My Honor". And, from the very beginning that's exactly what it meant... Loyalty not to Germany, not even to the Nazi Party but to Hitler himself. This praetorian

guard in their black parade uniforms provided both spectacle and muscle in the Nazi regime. Entry standards were strict – only those and such as those might enter the LEIBSTANDARTE. An SS joke was that even the Reichsführer, Heinrich Himmler would have been rejected.

**ROLES & DUTIES**

In pre war Germany their foremost duty was the protection of the Fuhrer himself. Wherever he was... so was the LAH. At the Reich Chancellery they guarded him... at Berchtesgarden they served and protected him... on his journeys around the Reich they accompanied him.

With the outbreak of the Second World War they became the 1st Waffen SS Division. Under the leadership of 'Sepp' Dietrich they saw action in Poland, France, Yugoslavia, Greece, Russia, back to France and Belgium again before being virtually annihilated in Hungary and Austria in 1945.

Their reputation for bravery and daring was second-to-none. However, their fanaticism, on several occasions, led to atrocities which marred their otherwise excellent military reputation.



**LAH2B**  
Flag Bearer

**LAH2D**  
Goosestepping with sword

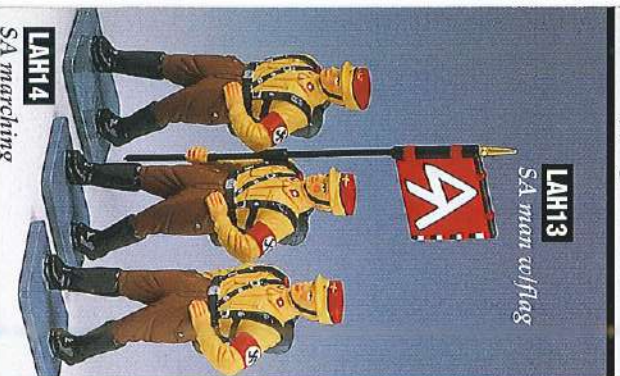


**LAH6**  
Typc. Drum & Bugle Band



**LAH1B**  
Standard Bearer

**LAH1A**  
Officer with sword



**LAH13**  
SA man w/flag



**LAH15**  
SS man w/flag



**LAH5**



**LAH7A**



**LAH1A**



**LAH2A**



**LAH10**



**LAH16**

**LAH8**

**LAH14**  
SA marching

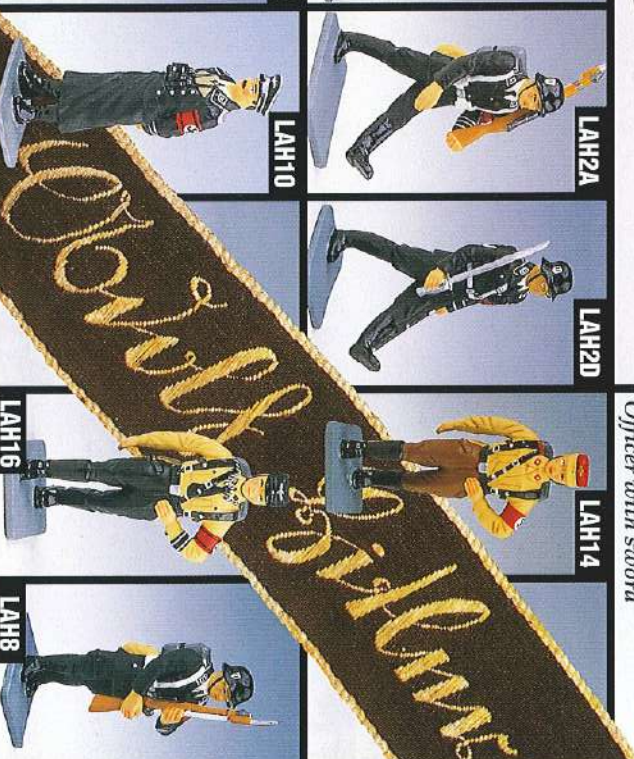
**LAH16**  
SS marching

**LAH7B**

**LAH14**

**LAH8**

"It seems characteristic of the Twentieth Century that the most powerful organisations chose to cloak their identity in the anonymity of abbreviations – KGB, FBI, MI5. Of these shorthand symbols, none is better known or more menacing than the two lightning strikes...SS."







“Uncommon valor was a common virtue”

# KING & COUNTRY'S THE SANDS OF IWO JIMA

In the annals of the United States Marines, one battle will be forever associated with the Corps... IWO JIMA.

On this tiny, barren, foul-smelling spit of volcanic sand and rock one of the bloodiest struggles of World War Two was fought.

In just 36 days of continuous combat over 6,000 Marines were killed and more than 18,000 wounded. Japanese losses totalled over 22,000 killed and a little over 1,000 captured!

Now, KING & COUNTRY are honouring the heroic memory of IWO JIMA with the release of this dramatic new series.



**KING & COUNTRY**  
FIRST WITH THE BEST!  
© 2001 • KING & COUNTRY

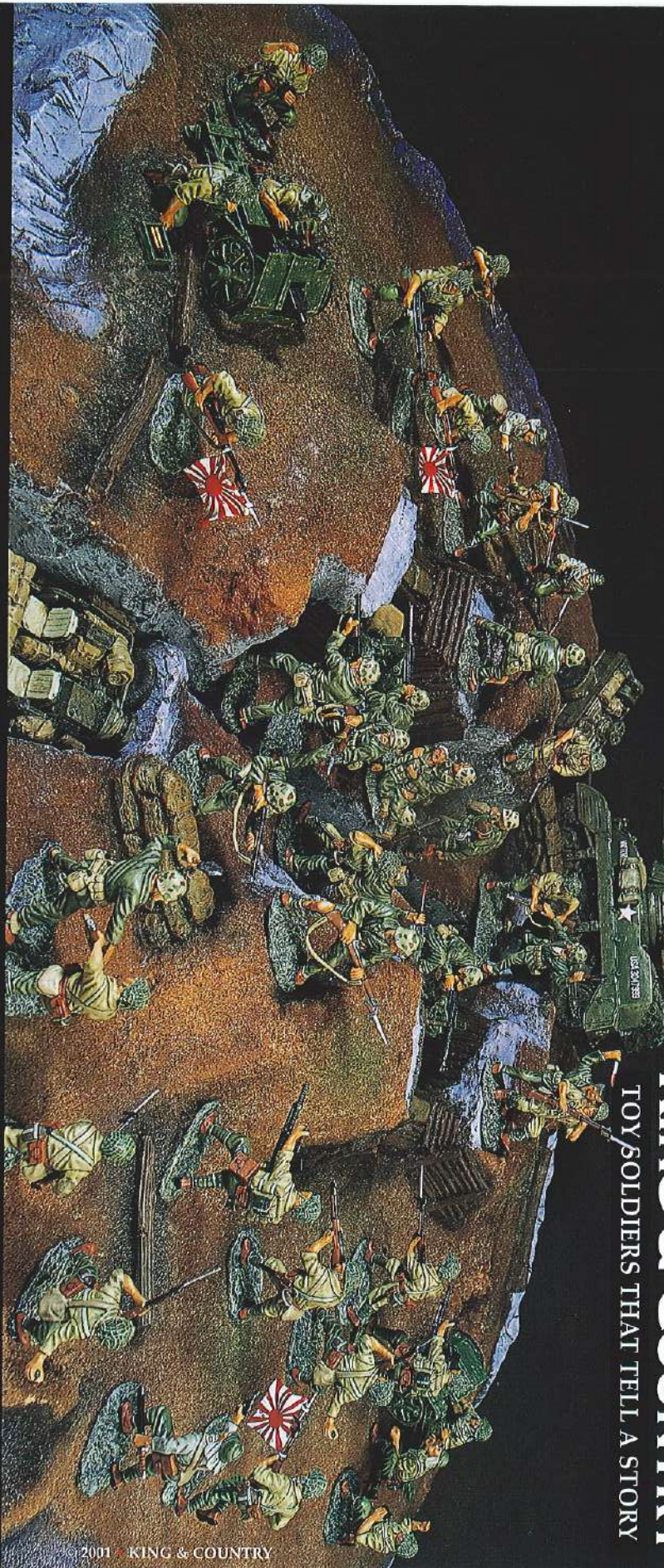
# BONZO!

**Return to the inferno of Iwo Jima**

**E**VERY SQUARE INCH of this small, volcanic ash island was drenched with blood as US Marines and Japanese Infantry fought to control it in the final stages of the Pacific War.

Now, King & Country add 6 more sets of fighting soldiers to their critically acclaimed series "THE SANDS OF IWO JIMA". Available from serious toy soldier dealers worldwide.

**KING & COUNTRY**  
TOY SOLDIERS THAT TELL A STORY



© 2001 KING & COUNTRY

**KING & COUNTRY HEAD QUARTERS**  
22Fl., Asian House, 1 Hennessy Road, Hong Kong  
Tel: (852) 2861 3450 Fax: (852) 2861 3806  
Website: www.kingandcountry.com

**KING & COUNTRY SHOP**  
362, Pacific Place, Queensway, Hong Kong  
Tel: (852) 2525 8603  
E-mail: hongkong@kingandcountry.com

**KING & COUNTRY UK**  
20 Rockingham Way, Portchester, Fareham  
PO16805, England, U.K. Tel / Fax: (44) 01329 23141  
Website: www.kingandcountry.co.uk





### THE ASSAULT

**IWJ 1 "Hit the Beach"** A Marine officer, .45 pistol in hand, leads three of his men... one carrying a .30 calibre machine gun up the beach.

**IWJ 2 "Fire Support"** A standing Marine BAR gunner takes aim while three others – including a Marine flame thrower advance on the enemy.



### BACKUP

**IWJ 3 "Calling up Reinforcements"** A wounded Marine officer reaches for his radio operator's handset while his platoon runner awaits orders.



**IWJ 4 "Take Cover!"** A lying prone Marine reaches for a fresh magazine for his BAR, next to him another crawls forward while his buddy gives covering fire.



**IWJ 6 "Raising the Flag"** Probably the most famous image of the USMC... the Iwo Jima flag-raising... five Marines and a Navy Corpsman symbolise the valor and sacrifice of the American fighting man as they raise the stars and stripes.

### THE JAPANESE

**IWJ 8 "Tough Opposition"** A crouching Japanese officer pistol in one hand, sword in the other, leads two



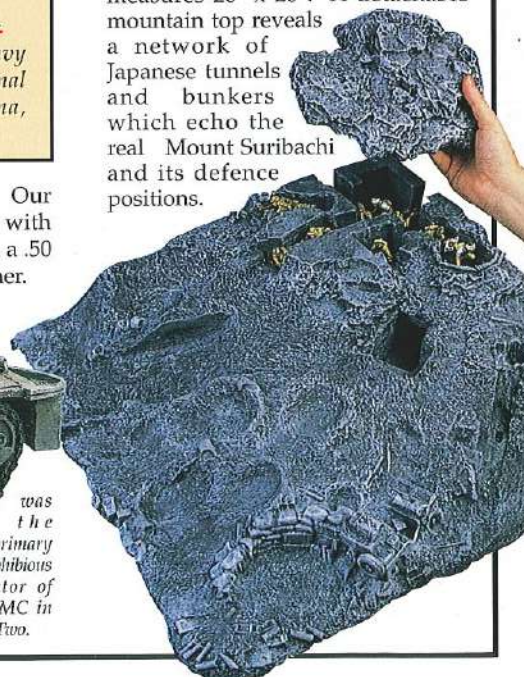
of his men in a determined defence.



**IWJ 9 "Mortar and Machine Gun"** Three Japanese infantry men prepare to make every bullet and bomb count in their last ditch battle.

### THE IWO JIMA BATTLEFIELD

Constructed from expanded polyurethane this detailed diorama measures 20" x 20". A detachable mountain top reveals a network of Japanese tunnels and bunkers which echo the real Mount Suribachi and its defence positions.



**UNCOMMON VALOR**  
*Twenty-seven Marines and Navy Corpsmen won the Congressional Medal of Honor on Iwo Jima, thirteen posthumously.*

**IWJ 7 "Amphibious Assault"** Our LVT-2 Amtrack comes complete with two .30 calibre machine guns and a .50 calibre manned by a Marine gunner.



**The LVT-2 AMTRACK**  
Popularly known as the 'Water Buffalo' the LVT-2

was the primary amphibious tractor of the USMC in World War Two.



### "CORPSMAN!"

**IWJ 12 "Medical Support"** Two US Navy Corpsmen (Medics) provide first aid to two wounded Marines.

**IWJ 13 "Artillery Fire"** Three Japanese soldiers man a small mountain gun and prepare to fire.



### BLOOD & STEEL

**IWJ 16 "One on One"** Attacked from behind this Jap is in for a lethal surprise.



### IWJ 18 "The Defenders"

Facing an enemy attack these three Marines prepare to hold their ground – no retreat!



### "COUNTER-ATTACK"

**IWJ 14 "Banzai One"** Banzai literally translated means "Long Live The Emperor". Here, an officer leads two of his men in a last ditch attempt to stem



### BAYONET v SHOVEL

**IWJ 17 "Close Quarter"** In any fight a Marine uses whatever weapon is closest to hand...



### MILITARY FACT

The M5 Stuart saw action in all theatres of war in WW2. From the coral shores of the Pacific to the bocage-lined fields of Normandy.

### COMING SOON!

### DD23 THE M5 STUART TANK

Soon to be released is our great new model of the M5 Stuart. Each model comes complete with a tank commander.



the American invaders of IWO JIMA.

In the face of certain defeat the Japanese soldier showed no lack of bravery.



"Uncommon valor was a common virtue"

# KING & COUNTRY'S THE SANDS OF IWO JIMA

In the annals of the United States Marines, one battle will be forever associated with the Corps... IWO JIMA.

On this tiny, barren, foul-smelling spit of volcanic sand and rock one of the bloodiest struggles of World War Two was fought.

In just 36 days of continuous combat over 6,000 Marines were killed and more than 18,000 wounded. Japanese losses totalled over 22,000 killed and a little over 1,000 captured!

Now, KING & COUNTRY are honouring the heroic memory of IWO JIMA with the release of this dramatic new series.



**KING & COUNTRY**  
FIRST WITH THE BEST!

© 2001 • KING & COUNTRY

# BONJOUR!

**Return to the inferno of Iwo Jima**

**EVERY SQUARE INCH** of this small, volcanic ash island was drenched with blood as US Marines and Japanese Infantry fought to control it in the final stages of the Pacific War.

Now, King & Country add 6 more sets of fighting soldiers to their critically acclaimed series "THE SANDS OF IWO JIMA". Available from serious toy soldier dealers worldwide.

**KING & COUNTRY**  
TOY SOLDIERS THAT TELL A STORY



© 2001 KING & COUNTRY

**KING & COUNTRY HEAD QUARTERS**

22Fl, Asian House, 1 Hennessy Road, Hong Kong  
Tel: (852) 2861 3450 Fax: (852) 2861 3806  
Website: www.kingandcountry.com

**KING & COUNTRY SHOP**

362, Pacific Place, Queensway, Hong Kong  
Tel: (852) 2525 8603  
E-mail: hongkong@kingandcountry.com

**KING & COUNTRY UK**

20 Rockingham Way, Portchester, Fareham  
PO168Q5, England, U.K. Tel / Fax: (44) 01329 23141  
Website: www.kingandcountry.co.uk





### THE ASSAULT

**IWJ 1 "Hit the Beach"** A Marine officer, .45 pistol in hand, leads three of his men... one carrying a .30 calibre machine gun up the beach.

**IWJ 2 "Fire Support!"** A standing Marine BAR gunner takes aim while three others – including a Marine flamethrower advance on the enemy.



### BACKUP

**IWJ 3 "Calling up Reinforcements"** A wounded Marine officer reaches for his radio operator's handset while his platoon runner awaits orders.



**IWJ 4 "Take Cover!"** A lying prone Marine reaches for a fresh magazine for his BAR, next to him another crawls forward while his buddy gives covering fire.



### The LVT-2 AMTRACK

Popularly known as the 'Water Buffalo' the LVT-2



**IWJ 6 "Raising the Flag"** Probably the most famous image of the USMC... the Iwo Jima flag-raising... five Marines and a Navy Corpsman symbolise the valor and sacrifice of the American fighting man as they raise the stars and stripes.

### THE JAPANESE

**IWJ 8 "Tough Opposition"** A crouching Japanese officer pistol in one hand, sword in the other, leads two



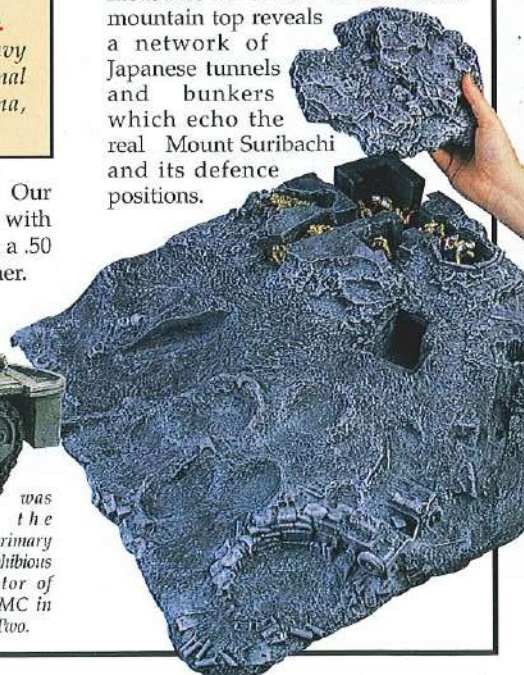
of his men in a determined defence.



**IWJ 9 "Mortar and Machine Gun"** Three Japanese infantry men prepare to make every bullet and bomb count in their last ditch battle.

### THE IWO JIMA BATTLEFIELD

Constructed from expanded polyurethane this detailed diorama measures 20" x 20". A detachable mountain top reveals a network of Japanese tunnels and bunkers which echo the real Mount Suribachi and its defence positions.



was the primary amphibious tractor of the USMC in World War Two.



### "CORPSMAN!"

**IWJ 12 "Medical Support"** Two US Navy Corpsmen (Medics) provide first aid to two wounded Marines.

**IWJ 13 "Artillery Fire"** Three Japanese soldiers man a small mountain gun and prepare to fire.



### "COUNTER-ATTACK"

**IWJ 14 "Banzai One"** Banzai literally translated means "Long Live The Emperor". Here, an officer leads two of his men in a last ditch attempt to stem



the American invaders of IWO JIMA.

In the face of certain defeat the Japanese soldier showed no lack of bravery.



### IWJ 15 "Banzai Two"

Three more Japanese take up the doomed charge in a desperate final effort.

### BLOOD & STEEL

**IWJ 16 "One on One"** Attacked from behind this Jap is in for a lethal surprise.



### IWJ 18 "The Defenders"

Facing an enemy attack these three Marines prepare to hold their ground – no retreat!



### BAYONET v SHOVEL

**IWJ 17 "Close Quarter"** In any fight a Marine uses whatever weapon is closest to hand...



### MILITARY FACT

The M5 Stuart saw action in all theatres of war in WW2. From the coral shores of the Pacific to the bocage-lined fields of Normandy.

### COMING SOON!

### DD23 THE M5 STUART TANK

Soon to be released is our great new model of the M5 Stuart. Each model comes complete with a tank commander.





**KING & COUNTRY HEAD QUARTERS** 22fl., Asian House, 1 Hennessy Road, Hong Kong. Tel : (852) 2861 3450 Fax : (852) 2861 3806 • **KING & COUNTRY SHOP** 362, Pacific Place, Queenswy, Hong Kong. Tel : (852) 2525 8603 • **KING & COUNTRY U.K.** 20 Rockingham Way, Portchester, Fareham, Hampshire, PO16 8QS, England. Tel / Fax : (44) 01329 233141 • VISIT OUR WEBSITE ON : [www.kingandcountry.com](http://www.kingandcountry.com)



**ANTIETAM**  
*September 17, 1862*

"As the fog of battle cleared away our Regiment made a dash for the bridge, cursing and shouting ourselves hoarse as we ran... fired... reloaded... and ran again... it seemed like a swarm of angry killer hornets surrounded us... all around comrades were stung and fell never to rise again..."

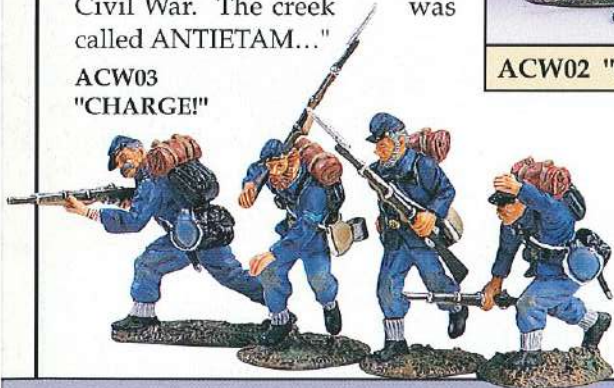




ACW01  
"STARS & STRIPES FOREVER"

"...Later in the morning, fighting moved to the Sunken Road connecting two nearby turnpikes. Finally it extended southwards to an old stone bridge spanning a little creek that became infamous for one of the bravest and bloodiest struggles of the entire Civil War. The creek was called ANTIETAM..."

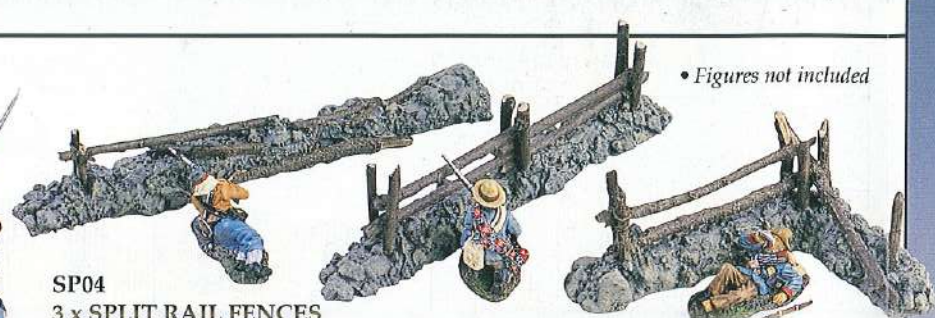
ACW03  
"CHARGE!"



ACW04 "HELPING A FRIEND"



ACW05  
"UNDER FIRE"



SP04  
3 x SPLIT RAIL FENCES

• Figures not included



ACW02 "FOLLOW THE COLORS"



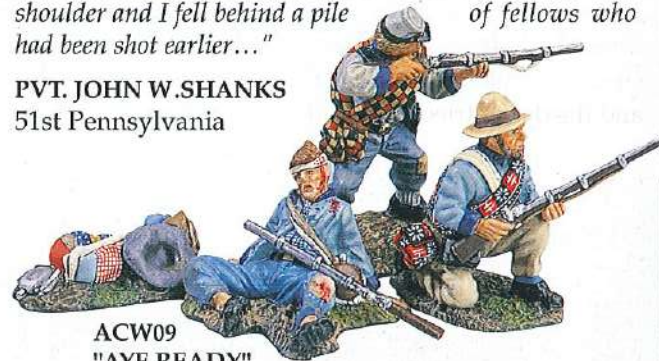
ACW14  
GEN. AMBROSE  
BURNSIDE



ACW06  
"CLIMBING THE FENCE"

"As fast as we reached the fence the enemy bullets cut us down. I was lucky though... one ball took me in the shoulder and I fell behind a pile of fellows who had been shot earlier..."

PVT. JOHN W. SHANKS  
51st Pennsylvania



ACW09  
"AYE READY"

Barely 400 strong, the Georgians held up Burnside's Corps of 12,500 men for more than 3 hours. The courage and tenacity of the 51st New York and the 51st Pennsylvania in seizing the bridge eventually drove them from the bluffs overlooking the creek...



ACW07 "STARS 'N' BARS"



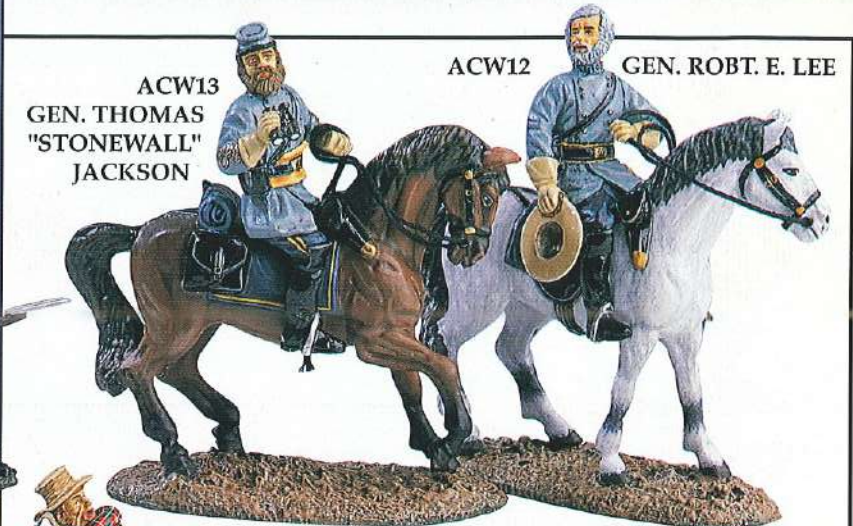
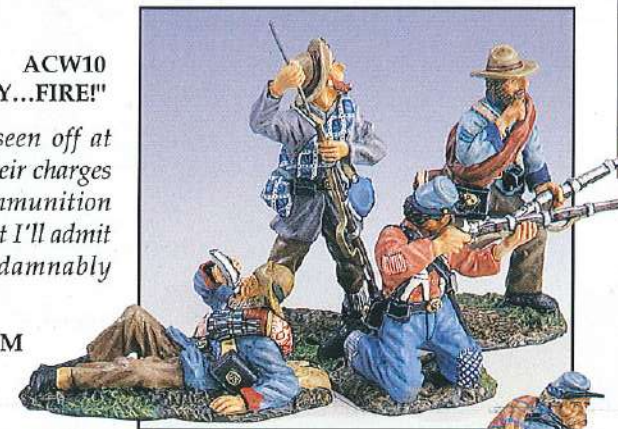
ACW08  
"THE DEFENDERS"

ACW10  
"LOAD... READY... FIRE!"

"We must've seen off at least four of their charges before our ammunition began to run low... But I'll admit they were brave... damnably brave!"

CPL. JESSE FORDHAM  
20th Georgia

"Everybody tears cartridges... loads... passes rifles... or shoots," recalled a 51st New Yorker. "Even the wounded and the dying tried to help us in our efforts."



ACW13  
GEN. THOMAS  
"STONEWALL"  
JACKSON

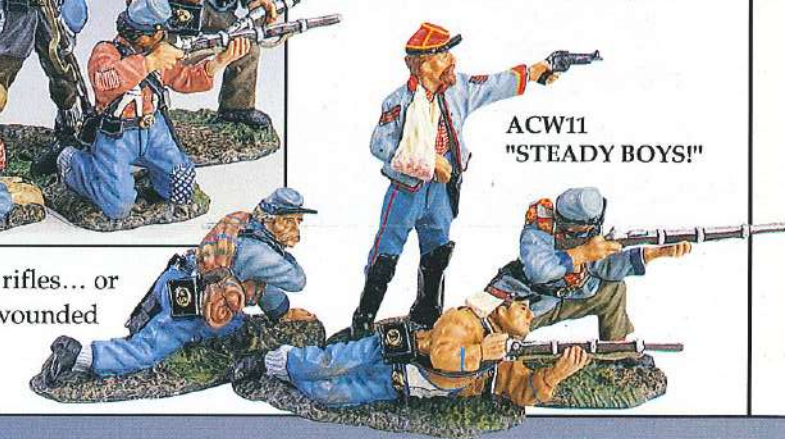
ACW12  
GEN. ROBT. E. LEE

The most successful command partnership of the War was undoubtedly that of Robt. E. Lee and "Stonewall" Jackson. Their bond was one of mutual respect and complimentary skills - Lee the grand strategist... Jackson the able and energetic executor.



SP03 DEFENSEWORKS

• Figures not included



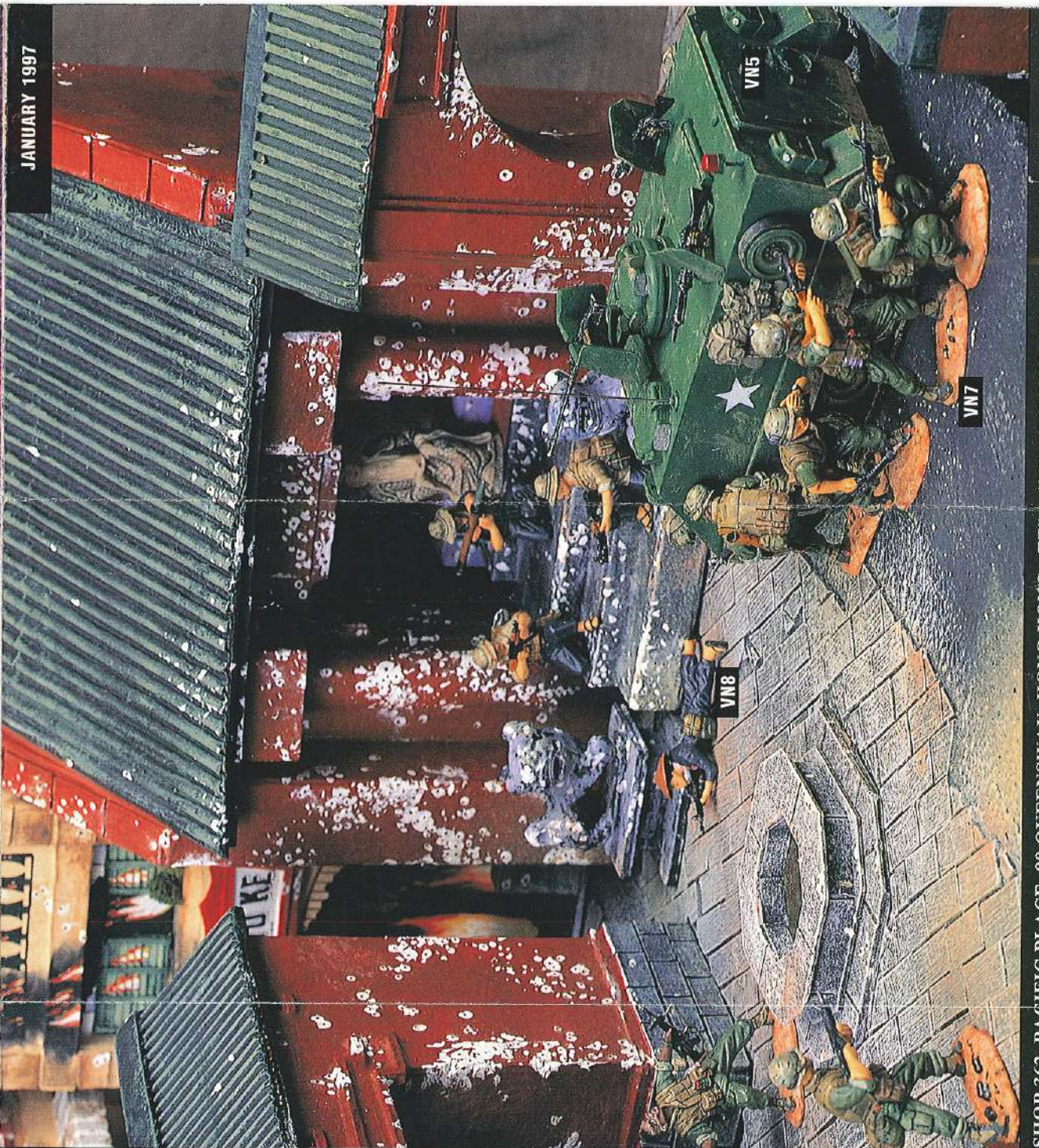
ACW11  
"STEADY BOYS!"

SP05  
BURNSIDE  
BRIDGE



• Figures not included  
Length: 18"  
Width: 6"





# TET OFFENSIVE

The country-wide uprising of the Viet Cong during the Tet holidays of 1968 was nowhere more bitterly fought than in the old imperial capital of Hue. The VC managed to capture the city and immediately began a reign of terror killing thousands of civilians associated with the South Vietnamese government. Before long the US Marines began counter attacking... fighting their way through the city street by street into the citadel in the most vicious urban battles since the Korean War. King & Country add three more sets to their controversial and dynamic new "VIETNAM" series. Set numbers VN6 and VN7 feature eight different US Marines in all-action poses. VN8 is an assault group of four Viet Cong—including a female sniper.

JANUARY 1997

Thousands of men... hundreds of aircraft... impossible odds... and just one bridge!

# ARNHEM

On Sunday 17 September 1944, three airborne divisions, pro-American and one British, descended on occupied Holland to seize a number of vital road and rail bridges. Codenamed "Market Garden" M4 SHERMAN TANK

this operation, if successful, might have ended the war in Europe by Christmas 1944. Unfortunately, it all came tragically undone in a snafu (you call it ARNHEM).

### 8 DIFFERENT SETS

With three new releases (and more on the way), King & Country provide collectors with a unique reminder of this epic battle.

- ARNHEM #1 "THE BATTLE FOR THE BRIDGE"
- ARNHEM #2 "FIGHTING WITHDRAWAL"
- ARNHEM #3 "WALKING WOUNDED"
- ARNHEM #4 "THE GUNNERS"
- ARNHEM #5 "CAPTURED"
- ARNHEM #6 "THE RECCO JEEP"
- ARNHEM #7 "AMBULANCE JEEP"
- ARNHEM #8 "THE MOSTAH TEAM"

WSS 10 MG42 Gun Group

M4 SHERMAN TANK

BREN-GUN CARRIERS

SINGLE PARA WITH COMBAT GUN

Each piece is skillfully painted in a high quality finish and made from a special ceramic material signed by Arnheim Veterans. A K & C collectible today!



"Streets of Old Hong Kong" is, without doubt, King & Country's most popular series. With over 50 sets available this unique range of Chinese figures and buildings has captured the imagination of collectors all over the world. This new flyer features several of the latest

## STREETS OF OLD HONG KONG

ESTD 1897

pieces including HK48 "The Sampan Set" - a sturdy papier mache boat complete with its

female bosun. HK49 shows a Street Sweeper with her rubbish baskets. HK50 is perfect for Chinese Lunar New Year - the Orange Tree Man plus two extra Orange Trees. HK51 is a particularly interesting piece - a Grandfather taking his young granddaughter for a stroll. The young

girl holds a paper lantern shaped like a fish in her hands.

COMING SOON

Two other sets shown in this bustling waterfront scene will not be available until March 1997. These are HK52 "The Old Shopkeeper & His Cats". An elderly Chinese

# 香1897港

Shopkeeper is using his abacus closely watched by his two pet cats. HK53 "The Lantern

Makers" shows three employees of a Lantern company with their beautifully painted Chinese Lanterns and an advertising display stand. So, whether you're a new collector or an existing one, there's always something new and exciting to add to your collection.

Happy collecting,

*Andy Neilson*

Andy C. Neilson  
Founder and Managing Director  
King & Country Hong Kong





★ KING & COUNTRY ★  
**PATRIOTS**  
 REBELS & REDCOATS



AR27 Continental Officer with Pike



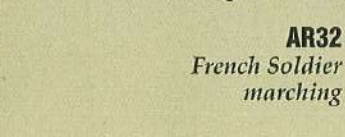
AR26 Continental Cannon



AR25 Continental Howitzer and Four Artillerymen



AR30 French Officer



AR31 French Sergeant



AR29 Washington's Own Bodyguards



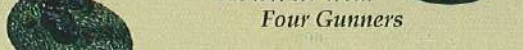
AR33 GEN. GEO. WASHINGTON



BR20 British Fusilier Fifer



BR22 Fusilier Marching



BR19 10th Lincoln Fifer



BR16 Royal Artillery Sergeant



BR17 British Officer with Telescope



BR18 10th Lincoln Sergeant



BR21 10th Lincoln Officer with Pike



BR23 10th Lincoln Marching



BR15 British Cannon

★ KING & COUNTRY ★  
**PATRIOTS**  
 REBELS & REDCOATS  
 AND NOW GEO. WASHINGTON & ARTILLERY

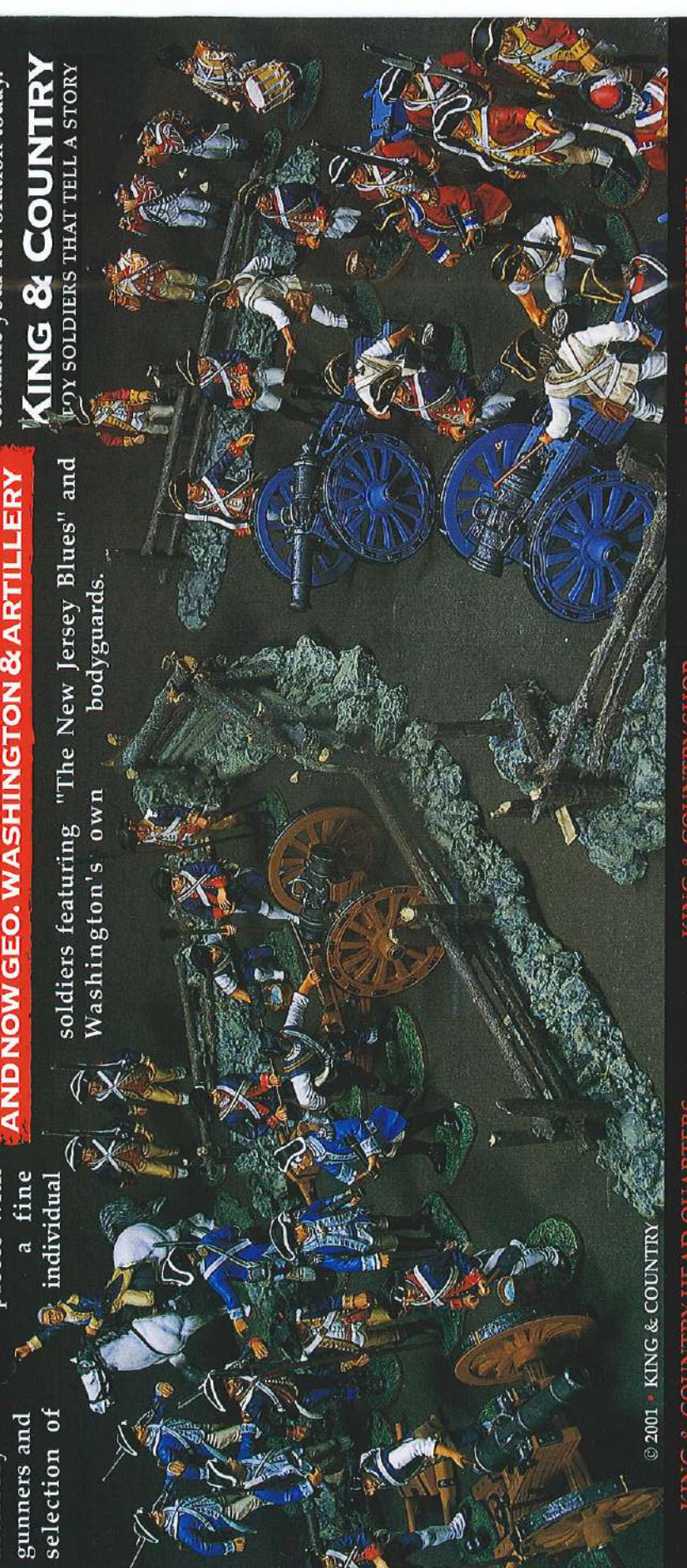
OUR REVOLUTIONARY WAR series "1776" goes from strength to strength with the latest release of guns, cannons and figures to add to your collection...

Foremost of course, is our mounted figure of General George Washington. Supporting him are two artillery pieces with a fine selection of individual gunners and

On the British side, opposing artillery are available as well as marching Fusiliers and Lincolns. Our Regimental Fifers join to make a superb display. Add on several British officers and sergeants and you have something very special. So, once again, beat the drum, unfurl the flag and continue your Revolution today.

**KING & COUNTRY**  
 FOY SOLDIERS THAT TELL A STORY

soldiers featuring "The New Jersey Blues" and Washington's own bodyguards.



© 2001 • KING & COUNTRY

KING & COUNTRY HEAD QUARTERS

22Fl., Asian House, 1 Hennessy Road, Hong Kong  
 Tel: (852) 2861 3450 Fax: (852) 2861 3806  
 Website: www.kingandcountry.com

KING & COUNTRY SHOP

362, Pacific Place, Queensway, Hong Kong  
 Tel: (852) 2525 8603  
 E-mail: hongkong@kingandcountry.com

KING & COUNTRY UK

20 Rockingham Way, Portchester, Fareham  
 PO168Q5, England, U.K. Tel / Fax: (44) 01329 23141  
 Website: www.kingandcountry.co.uk





**KING & COUNTRY HEAD QUARTERS**  
 22fl., Asian House, 1 Hennessy Road,  
 Hong Kong.  
 Tel : (852) 2861 3450 Fax : (852) 2861 3806  
 E-mail : hongkong@kingandcountry.com

**KING & COUNTRY SHOP**  
 362, Pacific Place, Queenswy,  
 Hong Kong.  
 Tel : (852) 2525 8603  
 Website : www.kingandcountry.com

**KING & COUNTRY UK**  
 20 Rockingham Way, Portchester, Fareham,  
 Hampshire, PO16 8QS, England.  
 Tel / Fax : (44) 01329 253141  
 Website : www.kingandcountry.co.uk

*Wolf Giltner*

**KING & COUNTRY'S LEIBSTANDARTE SS**

*murderous black-clad band of fanatics... a band of fanatics... a band of fanatics...*

**KING & COUNTRY'S**

*Untersturmführer*  
**ROBERT ARTHECKER**  
 I. Kompanie  
 Leibstandarte SS  
 Adolf Hitler

**KING & COUNTRY'S**

**LEIBSTANDARTE SS**

*Wolf Giltner*

**'IM EIN EHRE HEIST TREUE'**  
 literally translated means "Loyalty is My Honour". That was the motto of the Führer's own elite praetorian guard...the black-uniformed *Leibstandarte SS Adolf Hitler*.

Formed in 1933 as the SS Headquarters Guard Berlin they provided the Führer's personal bodyguards. Wherever he went...so did they. At the Reich Chancellery they guarded him...at Berchtesgarden they served and protected him...on his journeys around Germany they accompanied him.

Soon the LAH grew to Regimental strength. With the outbreak of WWII they became the first and foremost Waffen SS division. Under the leadership of 'Sepp' Dietrich they

saw action in Poland, France, Yugoslavia, Greece and Russia. In early 1944 they returned to France to prepare for the expected Allied invasion. By 1945 they were in Hungary vainly but bravely trying to stop the advancing Red Army. May 1945 saw only a few battered remnants remaining of a once-proud fighting division.

Their reputation for bravery and daring was second-to-none. Unfortunately their fanaticism led to several major atrocities that mar an otherwise excellent military record.



\* The Regimental monogram comprising the initial letters LAH of the Leibstandarte

