

# POSTE MILITAIRE

MILITARY FIGURES FOR THE COLLECTOR





## RAY LAMB

Known for some years as a skilful painter and converter of Historex kits, in 1973 Ray Lamb began by designing models in 75 mm for an english firm, producing also that modern masterpiece kit of Taisho Samurai.

In 1975 Ray Lamb began, under the name of POSTE MILITAIRE, the wonderful collection of miniatures shown on this catalogue.

*Conosciuto inizialmente come abile pittore ed elaboratore di kits della Historex, nel 1973 Ray Lamb iniziò a creare modelli in 75 mm. per un'importante produttore inglese, per il quale produsse anche quel capolavoro di kit che è il Samurai Taisho.*

*Nel 1975 Ray Lamb iniziò l'attività in proprio, creando la POSTE MILITAIRE e dando vita alla magnifica collezione presentata nelle pagine di questo catalogo.*







FTD-1  
French Trumpeter  
1st Regiment Dragoons  
8654  
Trombettiere Francese  
1° Reggimento Dragoni



TED-1  
Empress Dragoon  
Trumpeter  
8655  
Dragoni dell'Imperatrice  
Trombettiere



90 mm figure  
designed by  
Ray Lamb  
painted by  
Graham Bickerton





FH-1  
French Hussar  
1st Regiment 1804

8665  
Ussaro Francese  
1° Reggimento 1804

90 mm figure  
designed by  
Ray Lamb  
painted by  
Graham Bickerton







FCC-1  
French Chasseur  
Parade Dress  
8666  
Cacciatore Francese  
Uniforme da parata

90 mm figure  
designed by  
Ray Lamb  
painted by  
Graham Bickerton

FCC-2  
French Chasseur  
Service Dress  
8667  
Cacciatore Francese  
Uniforme di servizio

90 mm figure  
designed by  
Ray Lamb  
painted by  
Graham Bickerton





FC-2  
French Cuirassier  
Trooper  
8669  
Corazziere Francese  
Soldato

90 mm figure  
designed by  
Ray Lamb  
painted by  
Graham Bickerton

FTC-1  
French Cuirassier  
Trumpeter  
8668  
Corazziere Francese  
Trombettiere

90 mm figure  
designed by  
Ray Lamb  
painted by  
Graham Bickerton





FH-2  
French Hussar  
Trooper 1810-1812

8670  
Ussaro Francese  
Soldato 1810-1812

90 mm figure  
designed by  
Ray Lamb  
painted by  
Derek Critchley



figure  
painted by  
Ivo Preca







GH-1  
Garde d'Honneur  
Trooper 2nd Regiment

8679  
Guardia d'Onore  
Soldato 2° Reggimento

90 mm figure  
designed by  
Ray Lamb  
painted by  
Derek Critchley







FH-3  
French Trooper Hussar  
with chair

8671  
Ussaro Francese  
con sedia

90 mm figure  
designed by  
Ray Lamb  
painted by  
Graham Bickerton





MFTC  
Dismounted French Cuirassier  
Trumpeter  
8672  
Corazziere Francese  
Trombettiere con cavallo

CH-1  
Cuirassier Horse  
with furniture  
8673  
Cavallo per Corazziere  
con sella e finimenti



90 mm figure  
designed by  
Ray Lamb  
painted by  
Derek Critchley





MFD-1  
Mounted French Dragoon  
Napoleonic

8658  
Dragone Francese a cavallo  
Periodo Napoleonico

90 mm figure  
designed by  
Ray Lamb  
painted by  
Graham Bickerton



MFC-2  
Dismounted Trooper  
French Cuirassiers

8673  
Corazziere Francese  
Soldato con cavallo

90 mm figure  
designed by  
Ray Lamb  
painted by  
Ivo Preda







FTH-1  
Mounted Trumpeter Hussar

8676  
Trombettiere degli Ussari a cavallo



H-1  
Hussar Horse  
8677  
Cavallo per Ussaro



HHF  
Hussar Horse Furniture  
8677/02  
Sella e finimenti per Ussaro



90 mm figure  
designed by Ray Lamb  
painted by  
Ivo Preda





90 mm figure  
designed by Ray Lamb

painted by  
Robert Baxter

FTH-2  
Mounted Trooper of Hussars  
8684  
Ussaro a cavallo



Photography by David Lock  
Photo's courtesy of  
Nexus Special Interests





MFTL-1  
Mounted Trumpeter  
Imperial Guard  
(2nd Regt. Red Lancers)  
8683  
Trombettiere Lancieri (2° Rgt)  
Guardia Imperiale

H-2  
Lancer Horse  
8681  
Cavallo per Lanciere

LHF-1  
Horse furniture with lance  
8682  
Sella, finimenti e lancia



90 mm figure  
designed by Ray Lamb  
painted by Françoise Péchard





MFL-1  
Mounted Trooper  
Imperial Guard  
(2nd Regt. Red Lancers)  
8680  
Lanciere Rosso (2<sup>e</sup> Rgt)  
Guardia Imperiale



90 mm figure  
designed by Ray Lamb  
painted by Michael Volquarts





T-OC  
Mounted Trumpeter  
Orleans Cavalry

8659  
Cavalleria di Orleans  
Trombettiere a cavallo

90 mm figure  
designed by  
Ray Lamb  
painted by  
Graham Bickerton







O-OC  
Mounted Officer  
Orleans Cavalry

8660  
Cavallerna di Orleans  
Ufficiale a cavallo

90 mm figure  
designed by  
Ray Lamb  
painted by  
Anna Longo







90 mm figures  
designed by Ray Lamb  
painted by Graham Bickerton

FS-1  
Seated Samurai General  
Kato Kiyomasa

8664  
Generale Samurai  
Kato Kiyomasa

FS-2  
Samurai seated on tiger skin  
Momoyama Period

8662  
Samurai seduto su pelle di tigre  
Periodo Momoyama





MS-1  
Mounted Samurai  
Momoyama Period

8661  
Samurai a cavallo  
Periodo Momoyama

90 mm figure  
designed by  
Ray Lamb  
painted by  
Anna Longo

MS-2  
Mounted Samurai General  
Kato Kiyomasa

8663  
Generale Samurai  
Kato Kiyomasa a cavallo

90 mm figure  
designed by  
Ray Lamb







JL-1  
Kneeling Samurai wearing robes  
8675  
Samurai con veste

90 mm figure  
designed by Julian Lamb  
painted by Graham Bickerton



## Japan Collection

JAPAN-1  
Arrow Stand with two Bows  
8689/01  
Porta frecce con due archi

JAPAN-2  
Sword Stand with Daisho  
8689/02  
Porta spada con Daisho

JAPAN-3  
Helmet, Stand and Face Mask  
8689/03  
Elmo, porta elmo e maschera

JAPAN-4  
Armour Stand, Helmet, Face Mask  
and Jinbouri  
8689/04  
Porta armatura, elmo, maschera,  
Jinbouri

JAPAN-5  
Armour Stand, Helmet, Face Mask  
and Jinbouri  
8689/05  
Porta armatura, elmo, maschera,  
Jinbouri





SC75-1  
 Sous-Lieutenant - 1st Zouave Regiment  
 Battle of Froeschwiller 1870  
 8691/20  
 Sottotenente - 1° Reggimento Zuavi  
 Battaglia di Froeschwiller 1870

75 mm figure  
 designed by Stefano Cannone  
 painted by Graham Bickerton



SP-1  
 Giant and Wolfskin  
 8678  
 Gigante e Pelle di Lupo

90 mm figure  
 designed by Stan Pajak





90 mm figure  
designed by Julian Hullis  
painted by Anna Longo

JH90-1  
Timurid Emir  
Mongol Commander - 1400  
8694  
Emiro Timurid  
Comandante Mongolo - 1400







JH90-2  
Mamluck - 1400  
8694/02  
Mammelucco - 1400

90 mm figure  
designed by Julian Hullis  
painted by Anna Longo







J1190-3  
Janissary - c.1500  
8694/03  
Giannizzero - 1500

90 mm figure  
designed by Julian Hullis  
painted by Anna Longo







JH90-4 (8694/04)  
 Ashigaru - 13/14th century Japanese Foot Soldier  
 Fante Giapponese 13/14° Secolo  
 Painted by Marcus Nicholls

JH90-5 (8694/05)  
 Northern Cheyenne - Wolf Scout  
 Scout Cheyenne  
 Painted by Rob Hendon

JH90-8 (8694/08)  
 Pawnee Brave  
 Guerriero Pawnee



90 mm figures  
 designed by Julian Hullis





JF00-6 (8694/06)  
Crow Warrior  
Guerrero Crow  
JF00-7 (8694/07)  
Blackfoot Warrior  
Guerrero Blackfoot

90 mm figures  
designed by Julian Hullis  
painted by  
Graham Bickerton

Figure painted by  
Rodrigo Hernández Chacón  
Photo's by Carlos Salvador  
Courtesy of Accion Press, Spain.

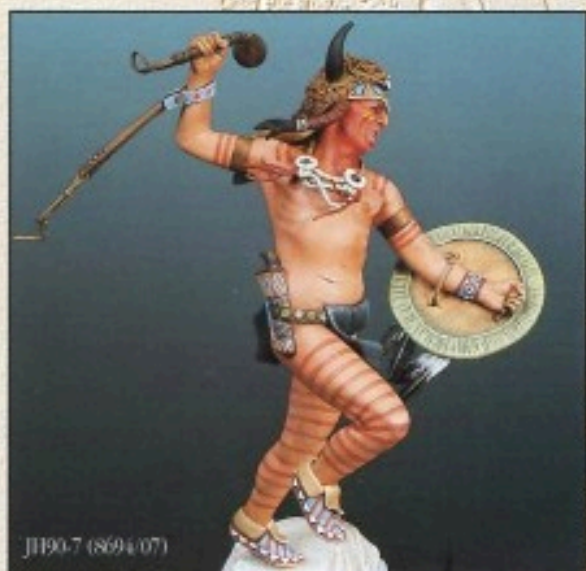




Figure painted by  
R. H. Chacon

Photo's by  
Carlos Salvador

Courtesy of  
Action Press, Spain.



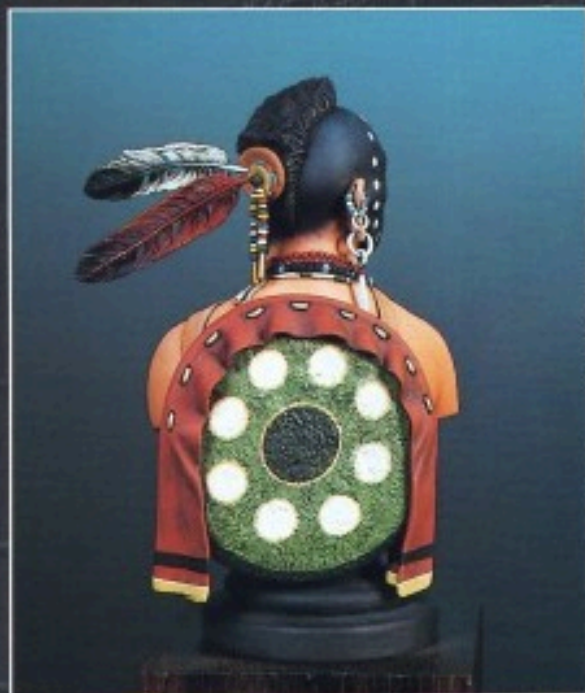
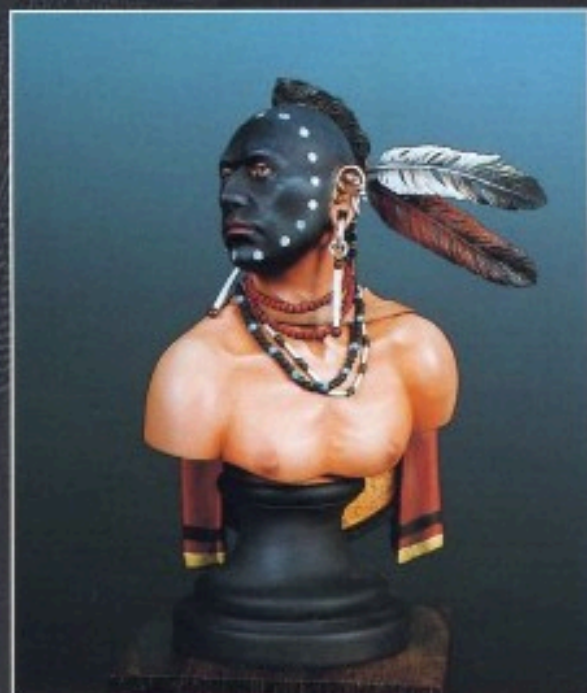
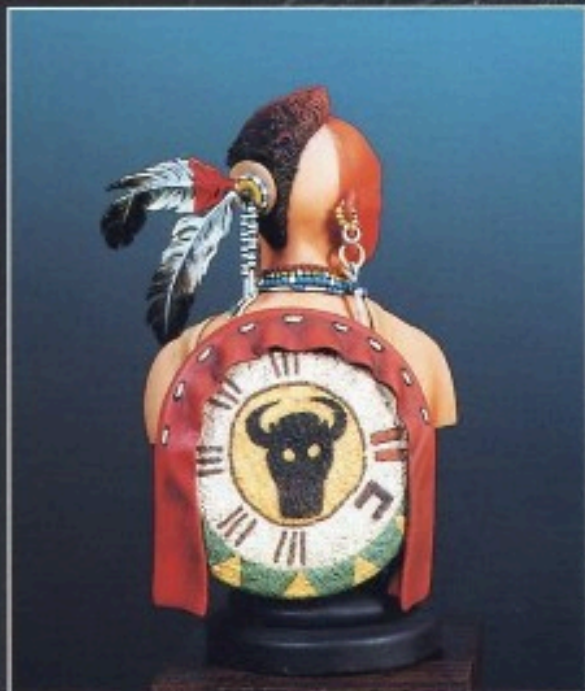
90 mm figures  
designed by Julian Hullis  
painted by  
Graham Bickerton





Figure painted by Graham Bickerton





THE AMERICAN INDIAN SERIES  
1:10th Scale Bust (Resin and White metal)  
Designed by Julian Lamb  
Painted by Graham Bickerton

JL-2 (8693/02)  
Pawnee Warrior  
Guerriero Pawnee





Figure painted by Graham Bickerton





THE AMERICAN INDIAN SERIES  
1:10th Scale Bust (Resin and White metal)  
Designed by Julian Lamb  
Painted by Raúl García Lattore

JL-3 (8693/03)  
Blood Warrior





70 mm. Figures designed by Derek Hansen





DH70-1 (8691/50)



DH70-4 (8691/53)



DH70-5 (8691/54)



DH70-2 (8691/51)



DH70-6 (8691/55)

DH70-1 (8691/50)  
Prussian Trooper (Siege of Paris 1871) - 11th Rgt of Ulans  
Soldato Prussiano (Assedio di Parigi 1871) - 11° Rgt Ulani

DH70-2 (8691/51)  
French Caporal, 77th Line Infantry (Mars-la-Tour 1870)  
Caporale Francese, 77° Fanteria di Linea (Mars-la-Tour 1870)  
Painted by Derek Hansen

DH70-3 (8691/52)  
Private Infantryman - 1st Regiment Tirailleurs Algerian 1870  
Tiragliatore Algerino - 1870

DH70-4 (8691/53)  
Private, 9th Battalion Bavarian Jagers 1870  
Soldato, 9° Btg. Cacciatori Bavaresi 1870

DH70-5 (8691/54)  
Trompette - Dragons de l'Impératrice - 1870  
Trombettiere - Dragoni dell'Imperatrice 1870

DH70-6 (8691/55)  
Miles Legionis, 1st Italica - Marcomanic Wars - 2nd century A.D.  
Legionario - Legione Italica - 2° secolo d.C.  
Painted by Luis Gomez Platon  
Photo's by Carlos Salvador  
Courtesy of Accion Press, Spain





KD-1

Viking Chieftain - 9th Century A.D.

8690/01

Capo Vichingo - 9° Secolo d.C.

KD-2

Prince of Kiev - Svyatoslav - 972 A.D.

8690/02

Svyatoslav - Principe di Kiev - 972 d.C.

KD-3

Alasdair MacDonal - Glencoe Chieftain

8690/03

Alasdair MacDonal - Capo Scozzese



70 mm figures  
designed by Keith Durham  
painted by Derek Williamson & Derek Holmes





KD-4  
Dracula - Warlord of Wallachia  
8690/04  
Dracula - Signore di Valacchia

KD-5  
Mongol Commander - 1240  
8690/05  
Comandante Mongolo - 1240

KD-6  
MacBeth - High King of Scotland - 1057  
8690/06  
MacBeth - Re di Scozia - 1057

70 mm figures  
designed by Keith Durham  
painted by Richard Colley & Derek Holmes





KD-7  
 Spanish Conquistador - 1530  
 8690/07  
 Conquistatore Spagnolo - 1530

KD-8  
 Halberdier - Surrey Contingent - Fladden 1513  
 8690/10  
 Alabardiere - Contingente del Surrey - Fladden 1513

KD-9  
 Galloglas - Ireland 1530  
 8690/11  
 Guerriero Celtico - Irlanda 1530

70 mm figures  
 designed by Keith Durham  
 KD-7 painted by Brian Stewart



KD-9





MG-1 (8690/08)  
Muscovite Rindl: 16th century



MG-2 (8690/09)  
Attila the Hun



MG-3 (8691/01)  
Officer of Hussars (Vorn Rattsky) - 1708



MG-4 (8690/12)  
Guard Cossack c.1890

75 mm figures  
designed by  
Mike Good





MG110-1  
Battle of Britain  
RAF Pilot (A.G. "Sailor" Malan)  
8692/01  
Pilota RAF  
Battaglia d'Inghilterra

110 mm figure  
designed by Mike Good  
painted by Rob Henden



MG110-2  
Battle of Britain  
Luftwaffe Pilot (Werner "Vati" Mölders)  
8692/02  
Pilota Luftwaffe  
Battaglia d'Inghilterra

110 mm figure  
designed by Mike Good  
painted by Rob Henden





**T**hese stylish bases are expressly created and produced to make your best figurines stand out. They are available in two different designs and are supplied in kit. Each kit includes metal parts and the precious wooden base.

SBS (8695/01)  
Small Base - Square Feet  
Base mm. 64x64 - piedi angolari

LBS (8696/01)  
Large Base - Square Feet  
Base mm. 148x105 - piedi angolari

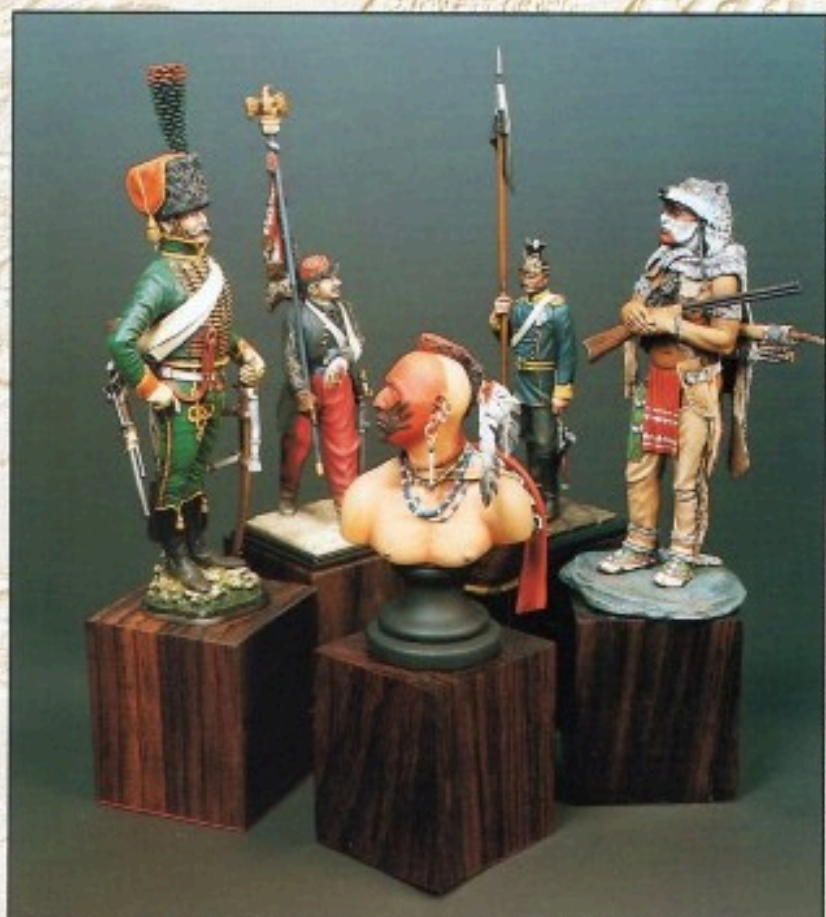
SBR (8695/02)  
Small Base - Round Feet  
Base mm. 64x64 - piedi rotondi

LBR (8696/02)  
Large Base - Round Feet  
Base mm. 148x105 - piedi rotondi



**R**osewood bases, hand finished. Suitable for all busts, most 70-75 mm and certain 90 mm figures.

44mm square x 50 mm deep





# POSTE MILITAIRE

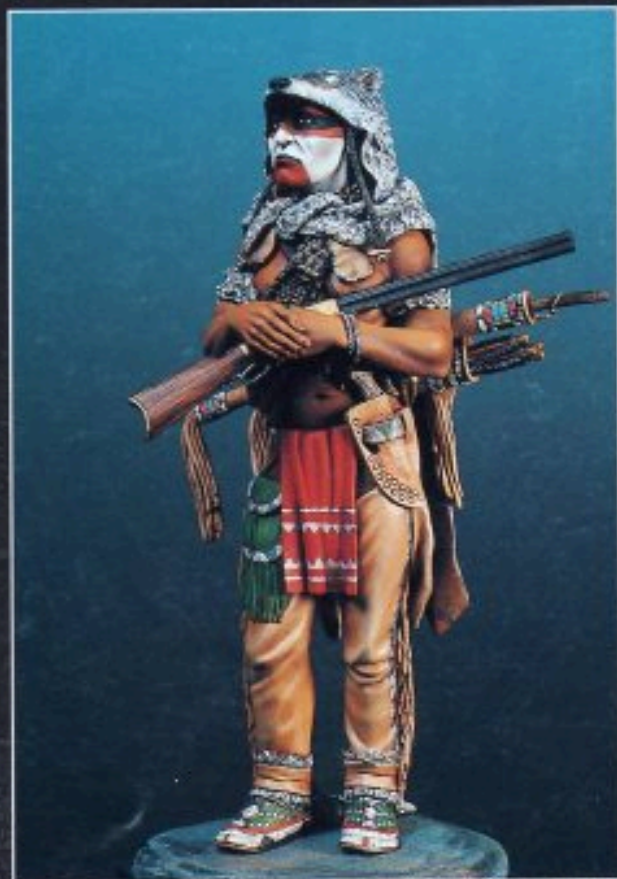


figure painted by  
Jesus Gamarra Lopez

Distributed in Italy by  
AMATI SRL - TORINO  
Fax (011) 31.60.150

art. 106

